



**ROBBY GORDON – TODD ROMANO**

**DANIEL GRANGER – KYLE SWOBODA**

**SPEED / UTV**

Design Presentation Document

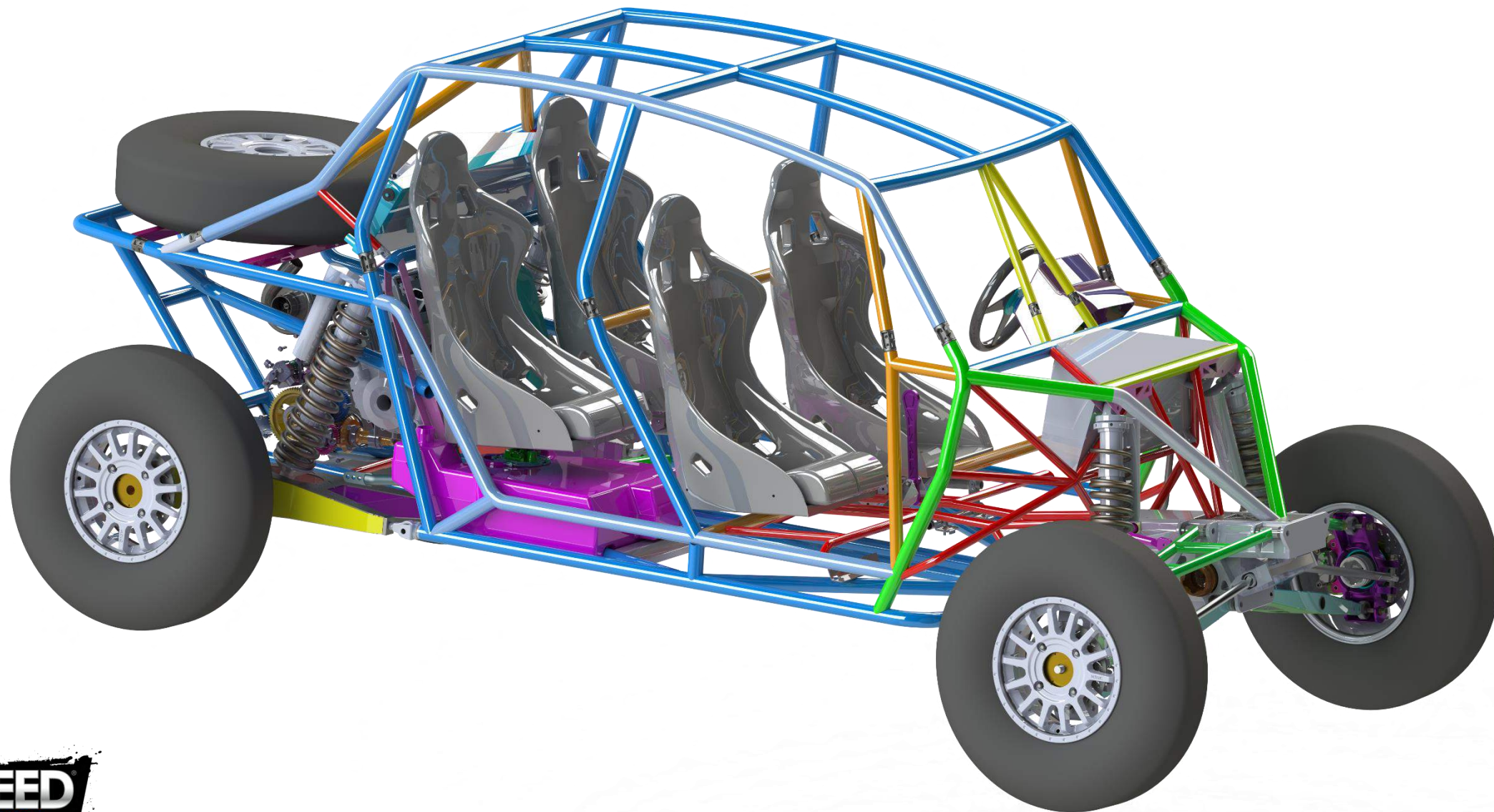
**FOR PUBLIC RELEASE:**

**04/08/2020**

SPEED UTV

4 SEAT

**SPEED**  **UTV**



GENERAL

SUSPENSION

STEERING

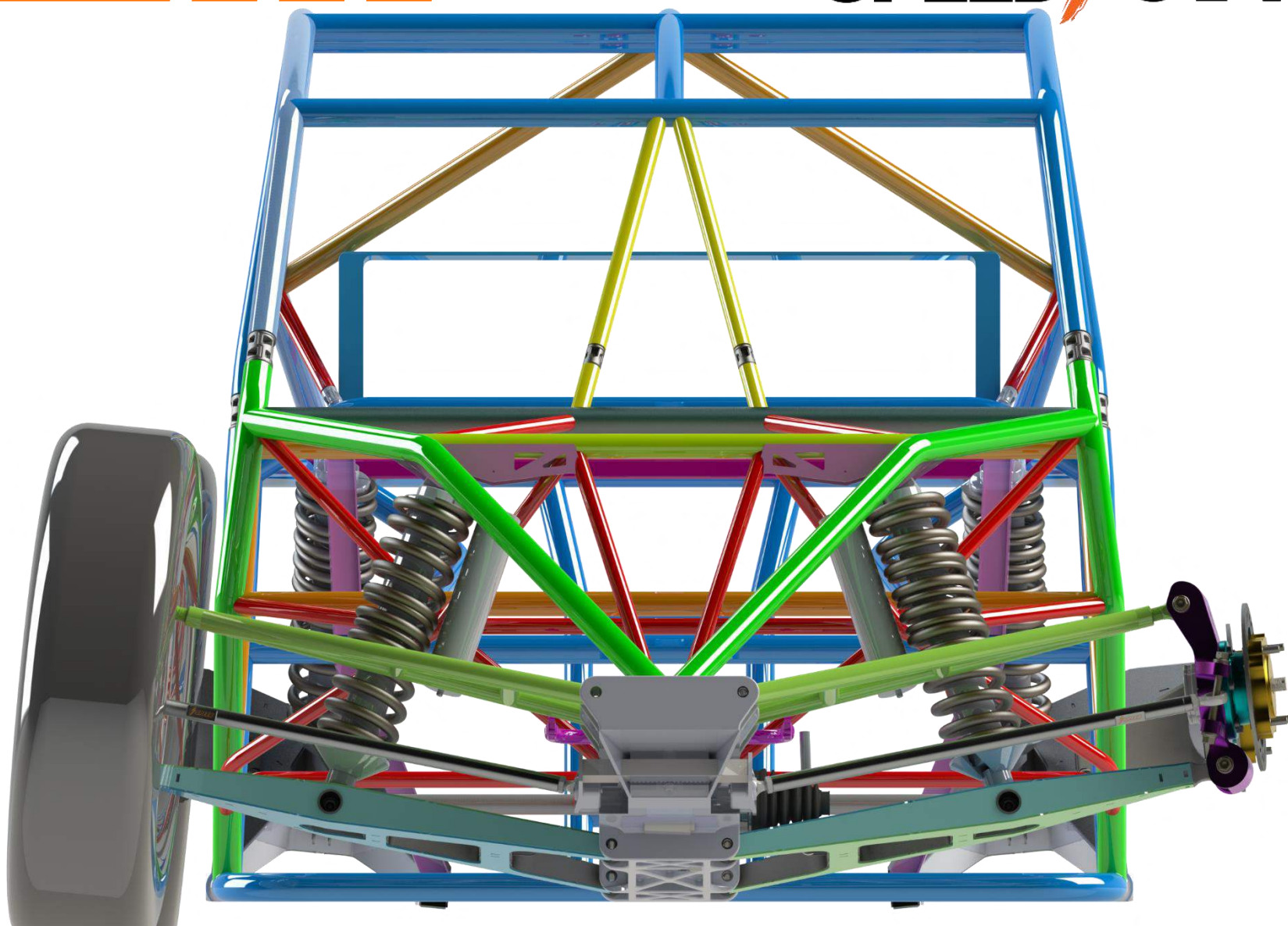
CHASSIS

BODY

INTERIOR

DRIVETRAIN

- Horsepower: 230hp-300hp (e85)
- Wheelbase: 120"
- Ground clearance: 15"
- 32" tires stock , will clear up to 35" tires





Robert Morgan 🖐️

How readily available will spare parts be for the motor, trans, arms, suspension, etc?

3h Like Reply

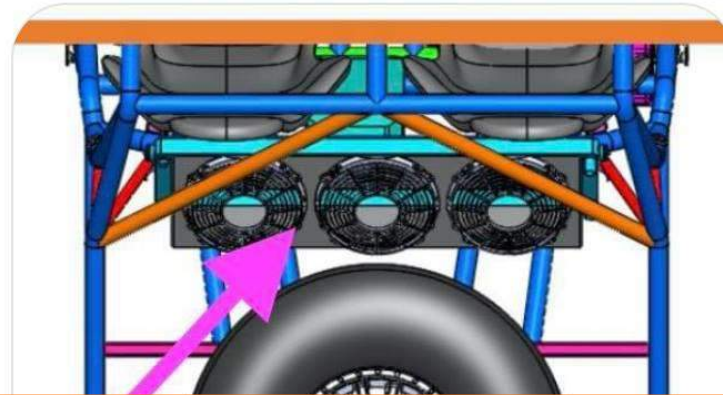
**Spare parts will be available as soon as the car launches.**





AJ Starsiak 🙋

Can you tell us more about the cooling setup?



**Cooling system will be discussed in a future presentation**



**tomassmiller1** Are there units already completed? Seems like you're still finalizing all aspects of the car and it's components. Will these be tested before releasing to the public? Looking to put a deposit on a four seater. Thanks!



12h 1 like Reply

**Yes, many components have been completed and several full prototype vehicles with drivetrain components are in process of being tested for reliability.**



dc\_soonersfan @robbygordon

@speedsxs can we get some details of the interior and screen set up please. Also will we be able to order a windshield as an aftermarket item. My family loves the windshield in my previous builds. Thanks and keep up the hard work. 🤘



10h 1 like Reply

**Some Interior feature will be discussed in this presentation. A full interior presentation will be later. Fully enclosed model with HVAC will be available sometime summer 2021.**



**tylervn87** @speedutv is the cage/frame one welded frame, or is the roll cage removable? Thanks



9h 1 like Reply

**Cage/frame is connected by forged tube connectors.**





**Michael George** I am definitely interested in getting one next year I have four rZR's now and so a lot of hardcore trail riding and rock crawling in eastern Tennessee any chance clutching could be more geared toward that style more like my duraclutch? I have rode with my buddy with a xx for about 900 miles and that's really the only thing I'm not super impressed with.

[Like](#) · [Reply](#) · 2h

**Clutching will be tuned for a 32" tire.  
Aftermarket clutch tuning will be available for  
your riding preference/wheel/tire set-up/  
increased power level and altitude.**



**Jonathan Cole** I really like how the long wheelbase version of the 2 seater looks like a mini trophy truck.

Like · Reply · 9h

**Thank you, that's what we were going for, we feel this will be the perfect platform for the desert as well as farmers that need to HAUL stuff around their property (AKA Hauling the Mail)**



**Don Gray** The pic of the motor shows it as a siamese parallel twin. Parallel I get. What is the crank phase? Who is building and programming the ECU, Brand ???

Like · Reply · 9h

**360 Degree firing order, Bosch ECU tuned by an off road industry expert**



Anthony Perez • 19:58

Does front differential have a locker?

**Yes, more details will follow in the drivetrain presentation**



Ron Beardsley • 21:45

Are they adaptable to long travel suspension

**They come factory with 77" suspension 25" of usable travel it's the best there is.**



**R&P, Can we hear more about the Rack?  
Electric Hydraulic combo? I'd like to know more  
about it? Is the hydraulic a internal dampener  
with the servo motor being electric?**

**The electro-hydraulic combo provides  
assistance like any ram assisted steering as  
well as helping to reduce the effects of an  
impact on the wheel being transferred back to  
the driver's hands. See Page 21.**

**Shocks, Being that the shocks are not standard at 3.25, will shock tuners be able to get parts to valve, and what about springs? Does anyone make a 3.75 Spring if you want to change rates, or run a better made spring?**

**Springs are available and a standard fit size. Tuning parts would need to be custom, However, these are going to be some of the most adjustable shocks ever offered by a manufacturer.**

Chassis, will the chassis have specific front & rear tie down points? Many models no longer offer this, which is dumb! How are you suppose to trailer it? The aftermarket end, has had to fix this for Can Am & Polaris.

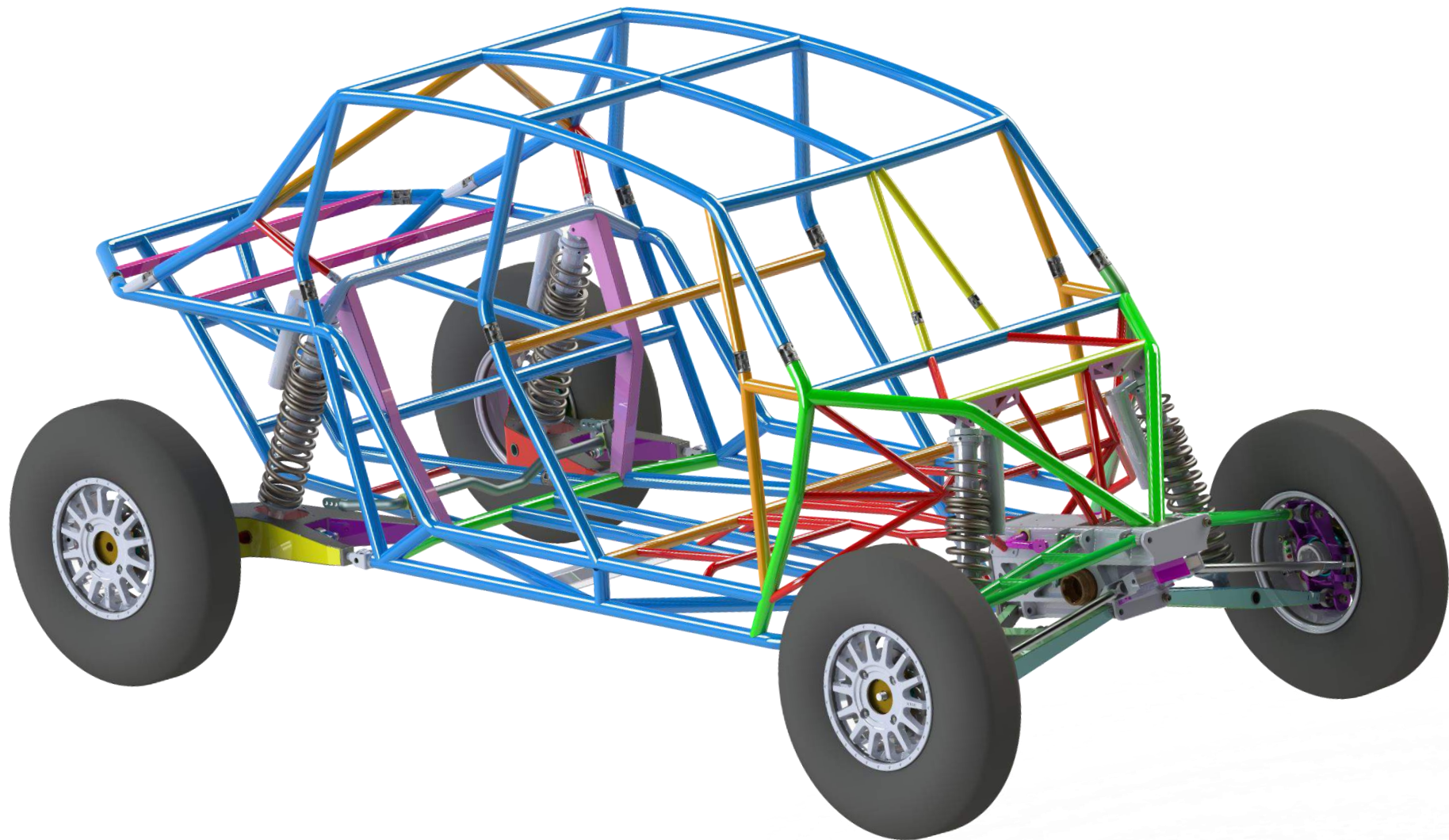
The way we will be tying the vehicles down is on the suspension components such as the lower control arms and the trailing arms.

**Engine, dry or wet sump? Location of the oil filter? If mounted vertical you could change with less mess and prime new filters. Is this an option? .**

**The engine will feature a dry sump. As for the oil filter, it will be easily accessible.**

THIS WEEKS PRESENTATION

**SPEED**  **UTV**



GENERAL

SUSPENSION

STEERING

CHASSIS

BODY

INTERIOR

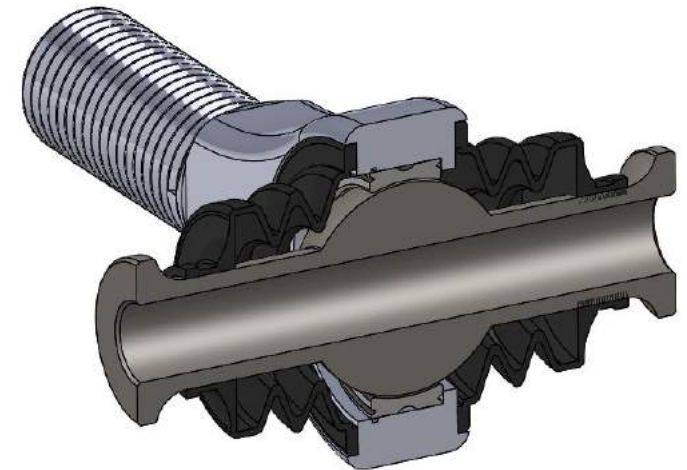
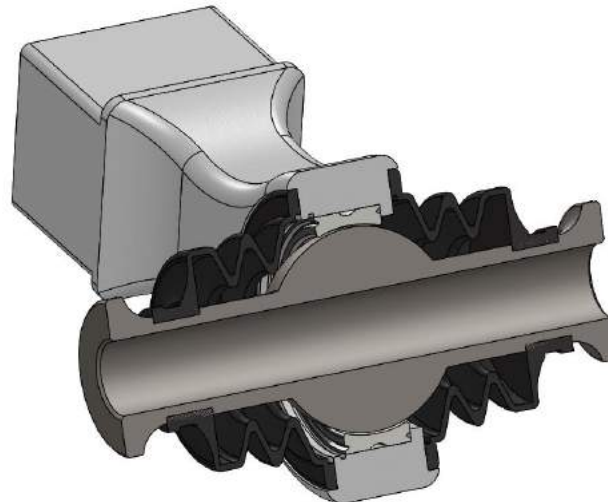
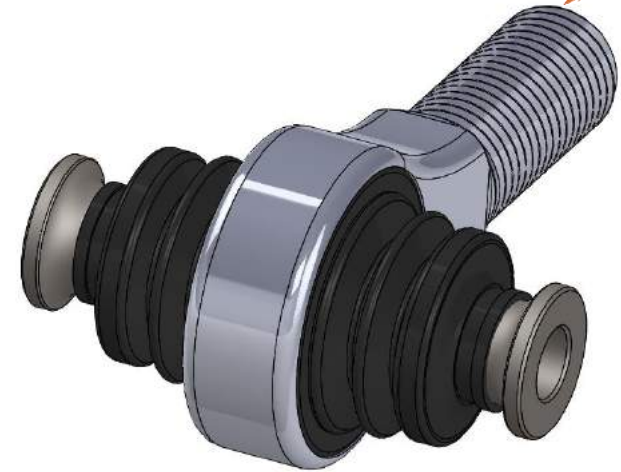
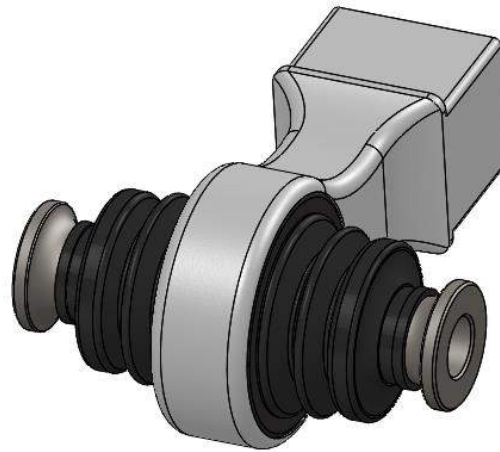
DRIVETRAIN



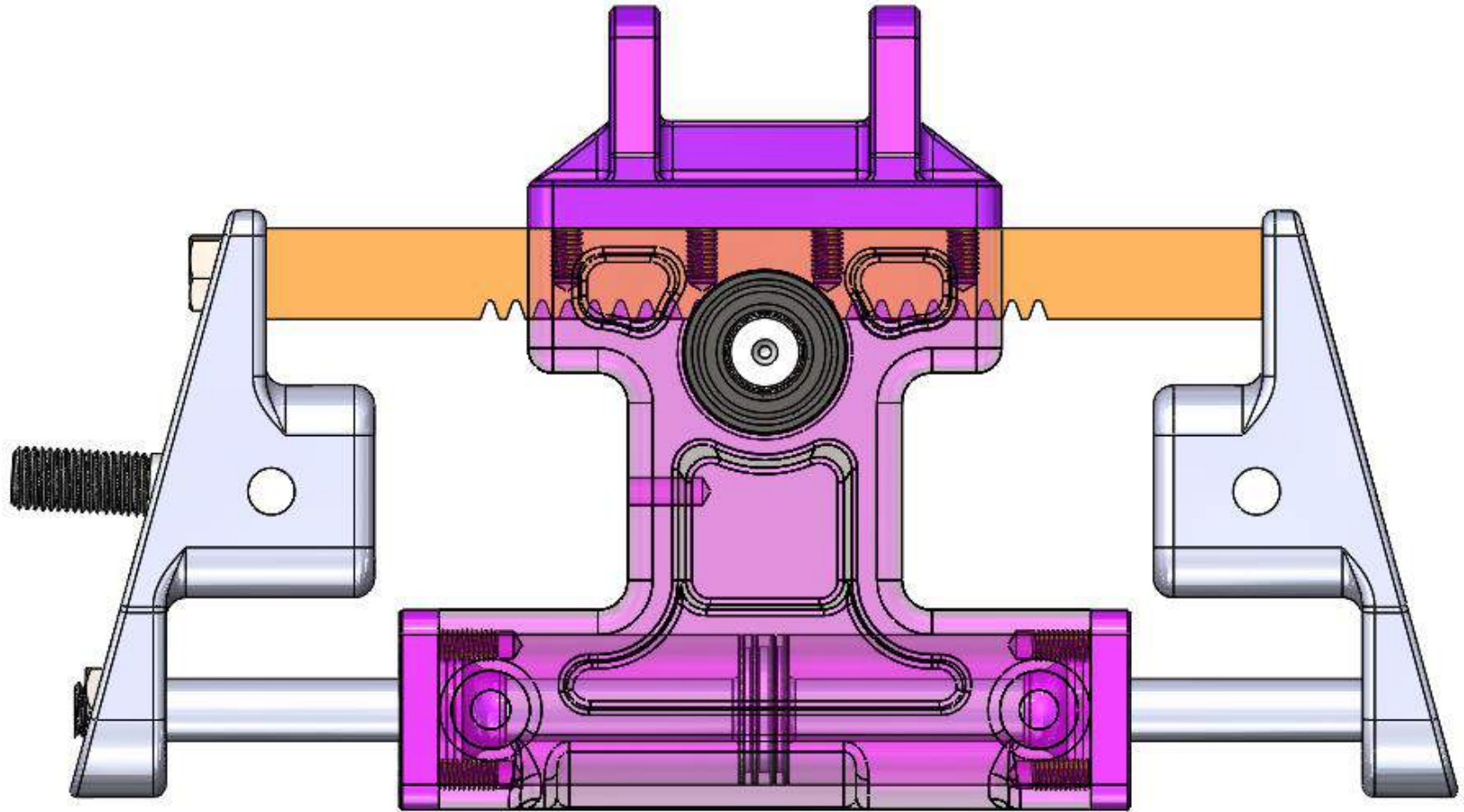
- 3.25" Internal Bypass
- 12" Stroke
- 360 degree clock-able piggyback reservoir
- External Independently adjustable rebound and compression
- Dual rate springs
- Finned reservoir



- Custom bearings with built in misalignment
- External rubber boot weather protection
- Replaceable, same bearings used multiple places on car.

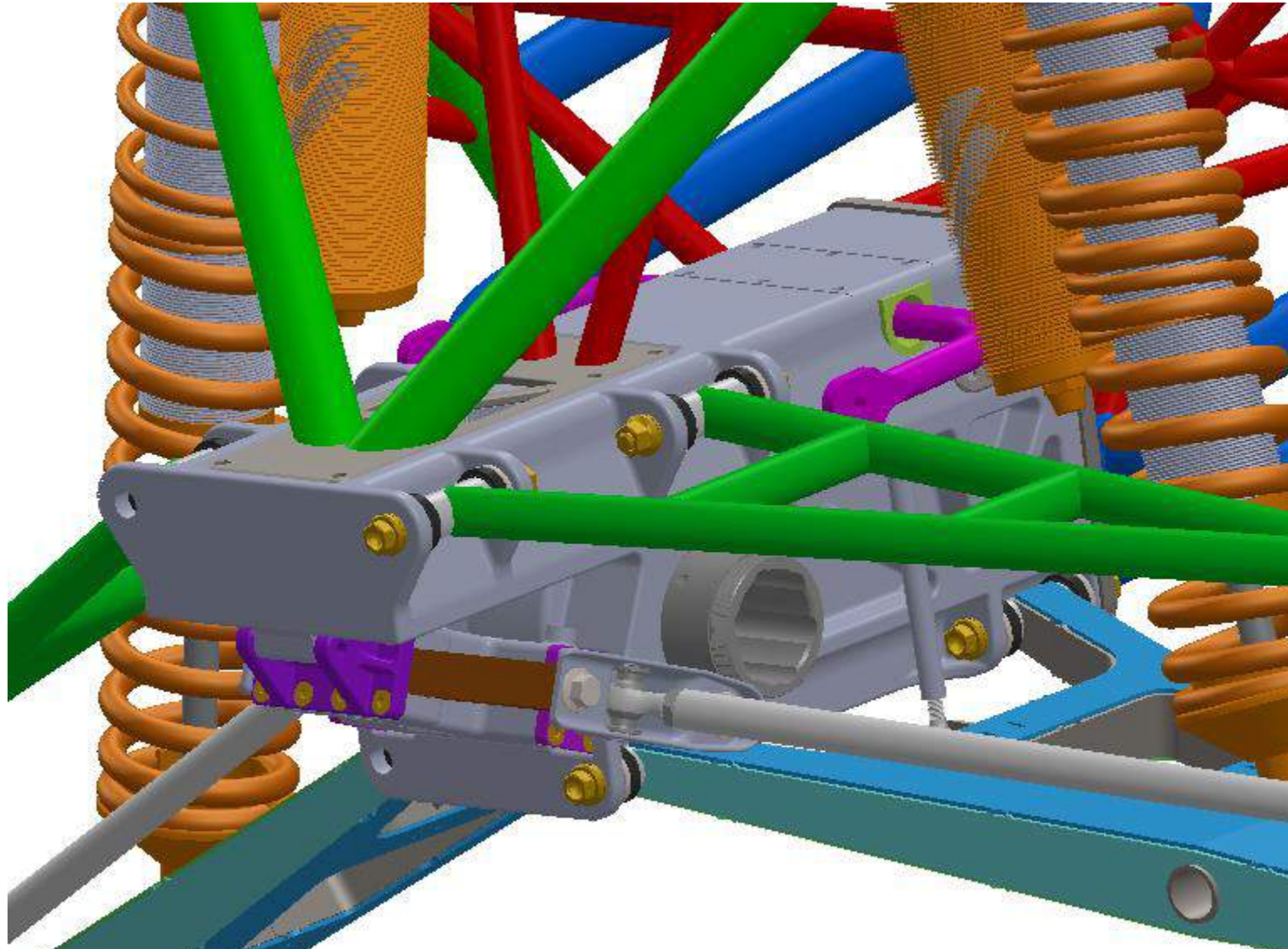


- **Electo-Hydraulic assist power steering**
- **1.75:1 Ratio**
- **Less than 0.5 deg. of Bump steer**



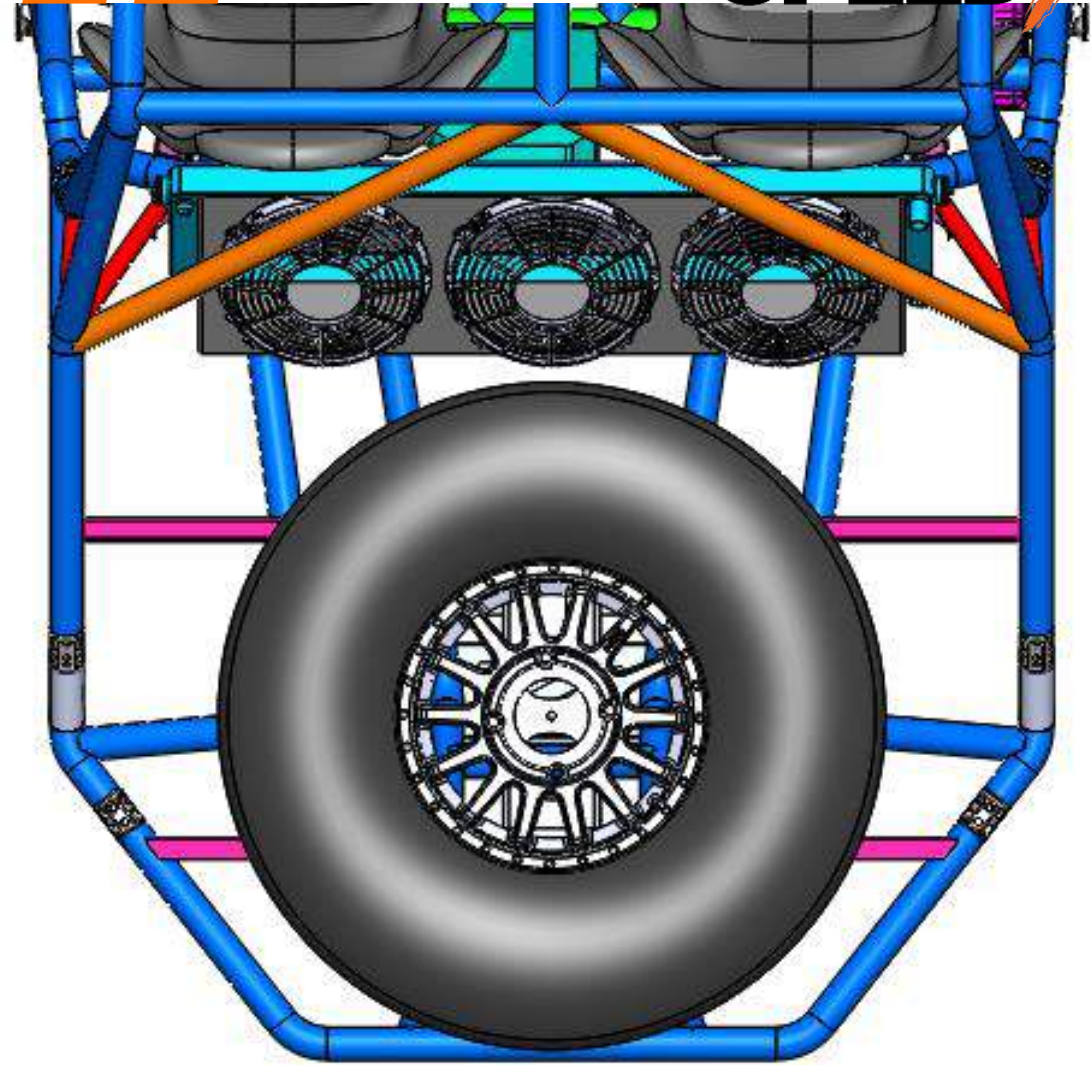
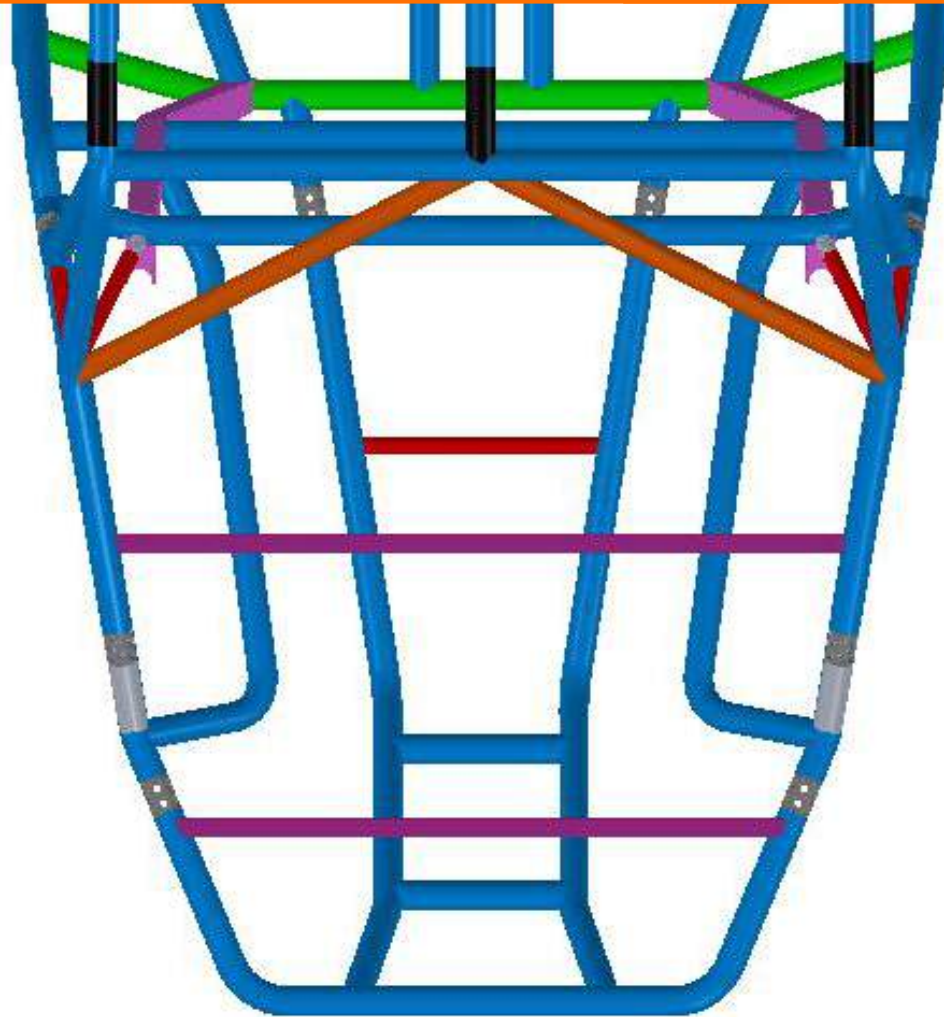


- Patented RG AWD Trophy Truck (Unicorn) inspired Bulkhead
- Mounts suspension, steering, and front differential all in one structure

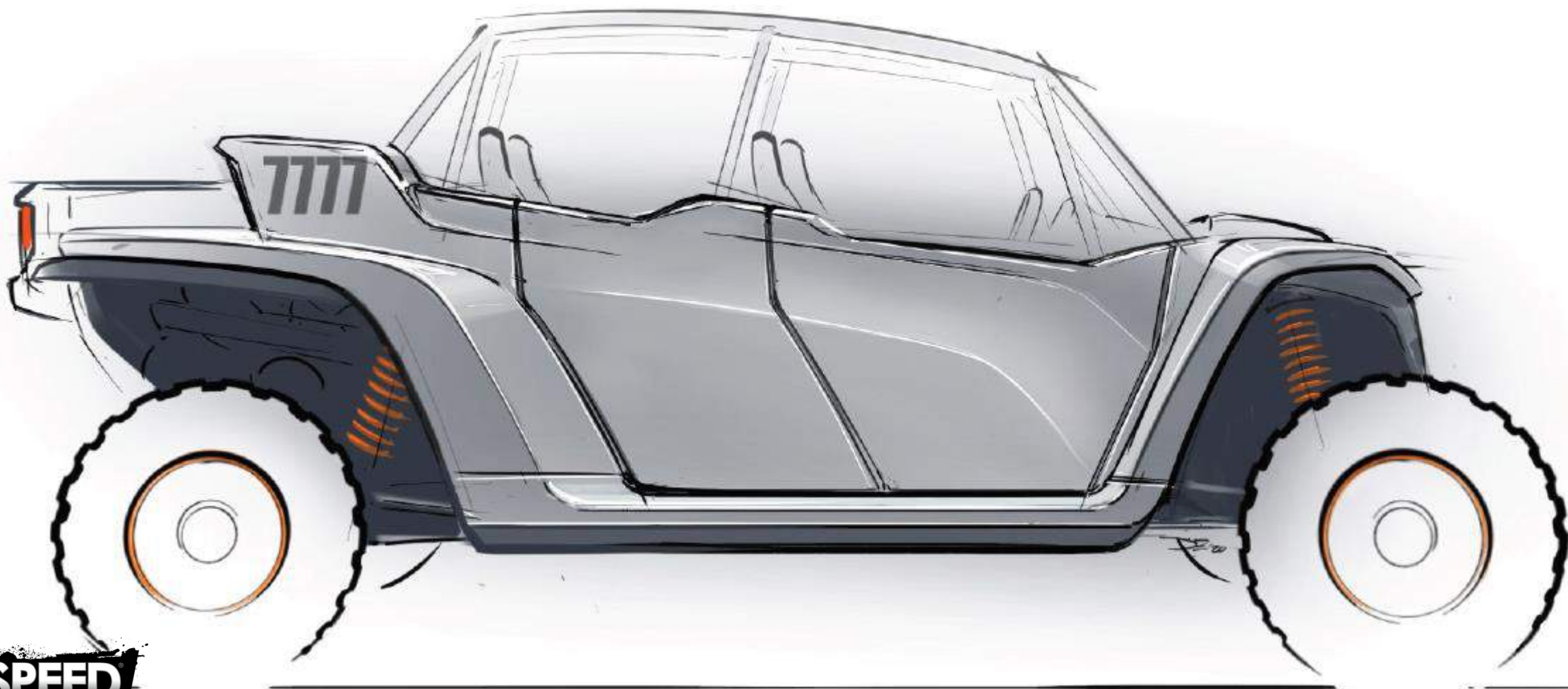


## WIDER REAR BED FRAME

**SPEED**  **UTV**



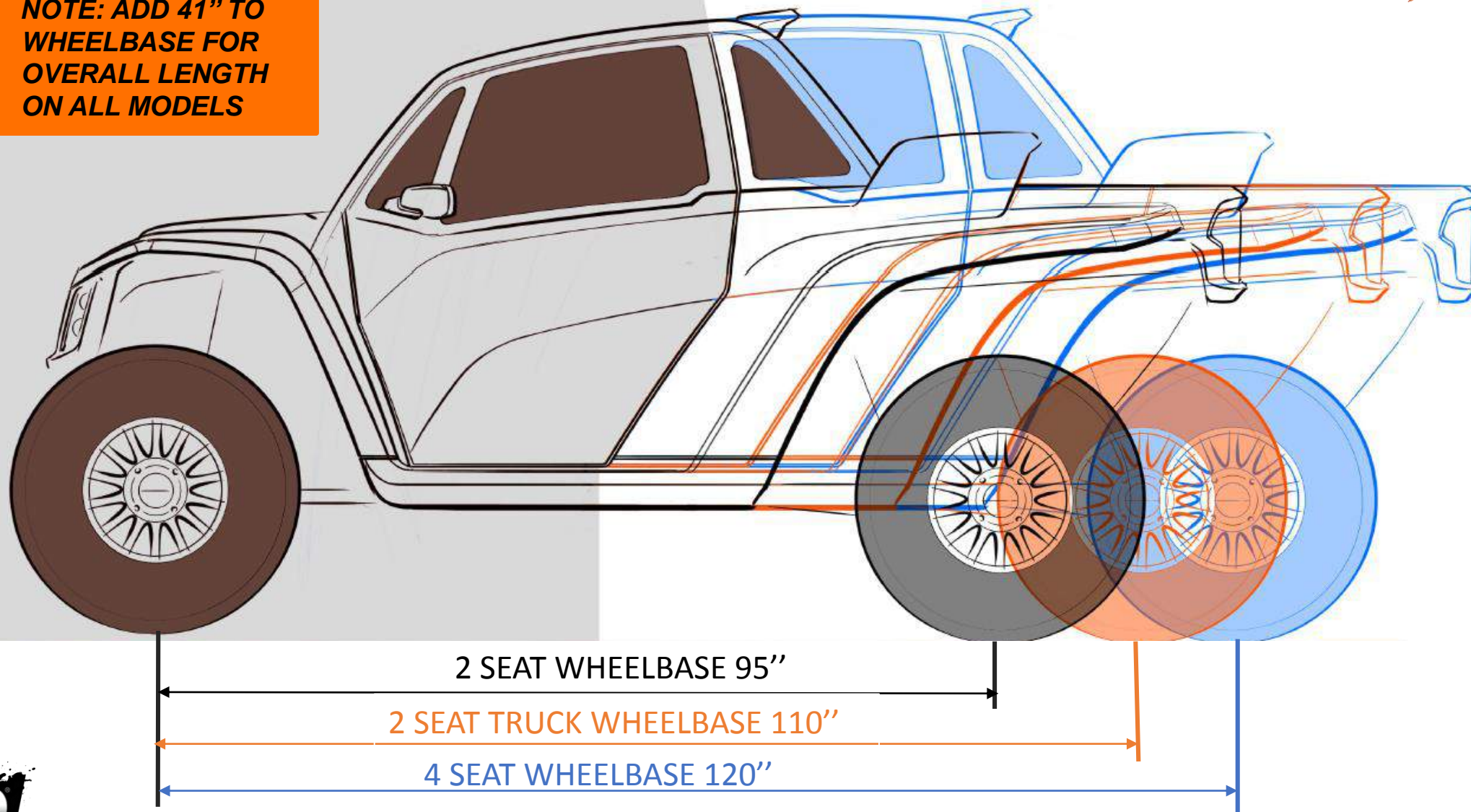




# WHEELBASE

**SPEED/UTV**

- **NOTE: ADD 41" TO WHEELBASE FOR OVERALL LENGTH ON ALL MODELS**



2 SEAT WHEELBASE 95"

2 SEAT TRUCK WHEELBASE 110"

4 SEAT WHEELBASE 120"



GENERAL

SUSPENSION

STEERING

CHASSIS

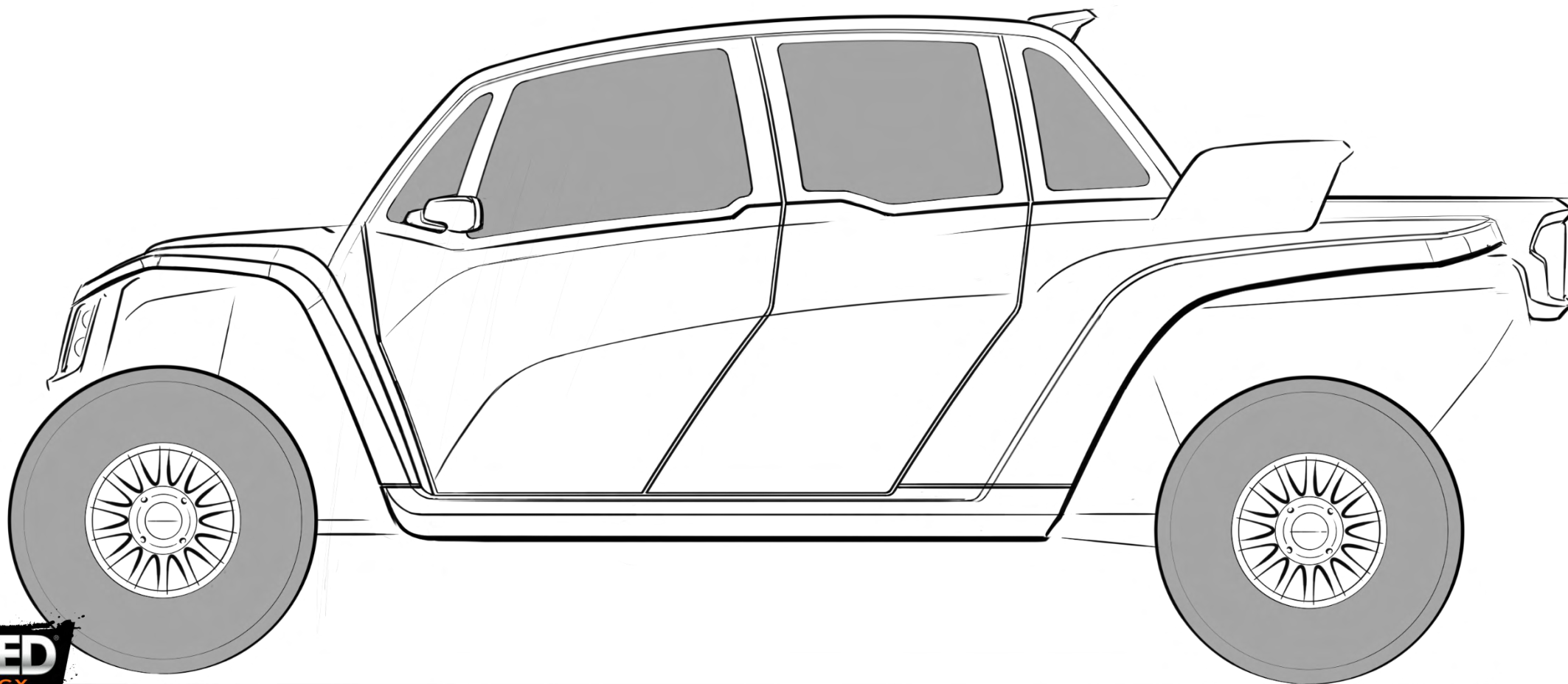
BODY

INTERIOR

DRIVETRAIN

# BODY

**SPEED**  **UTV**



GENERAL

SUSPENSION

STEERING

CHASSIS

**BODY**

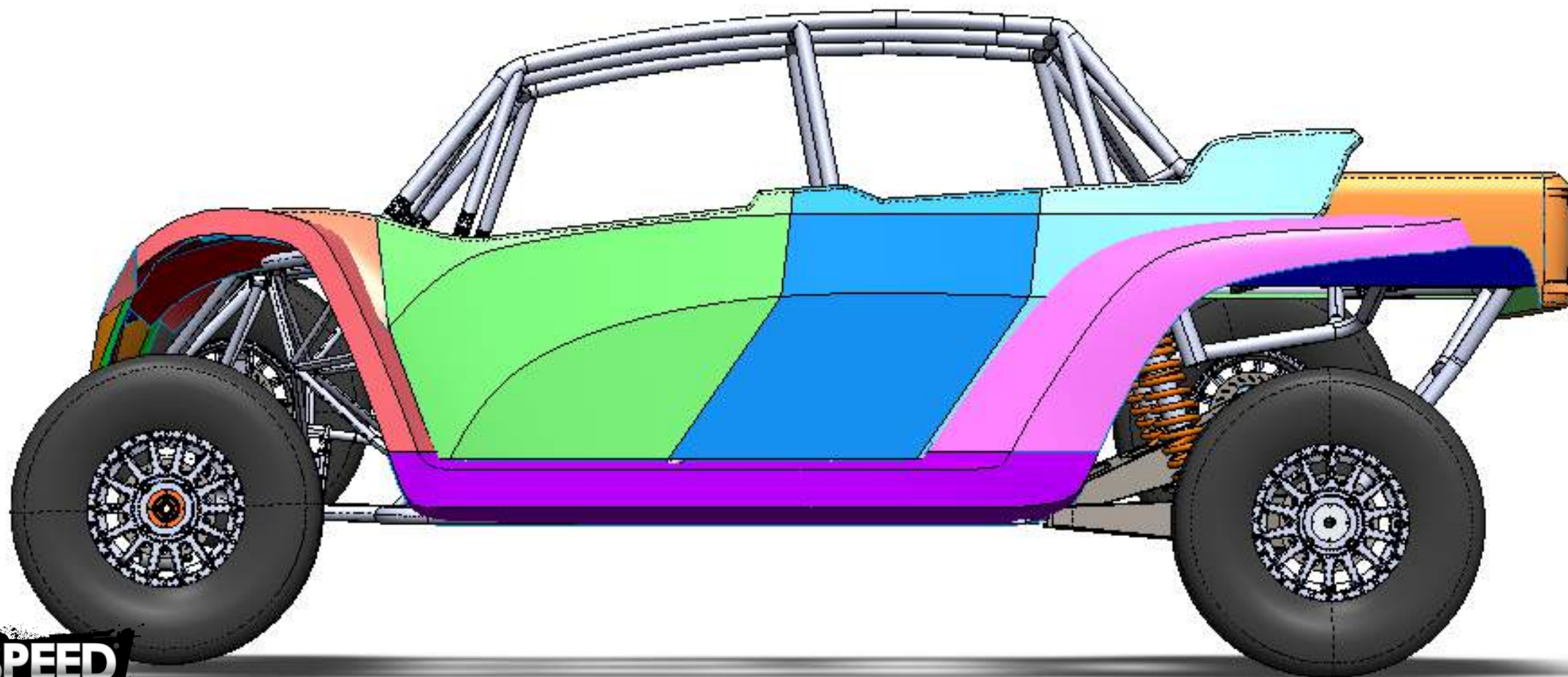
INTERIOR

DRIVETRAIN



# BODY

**SPEED**  **UTV**



GENERAL

SUSPENSION

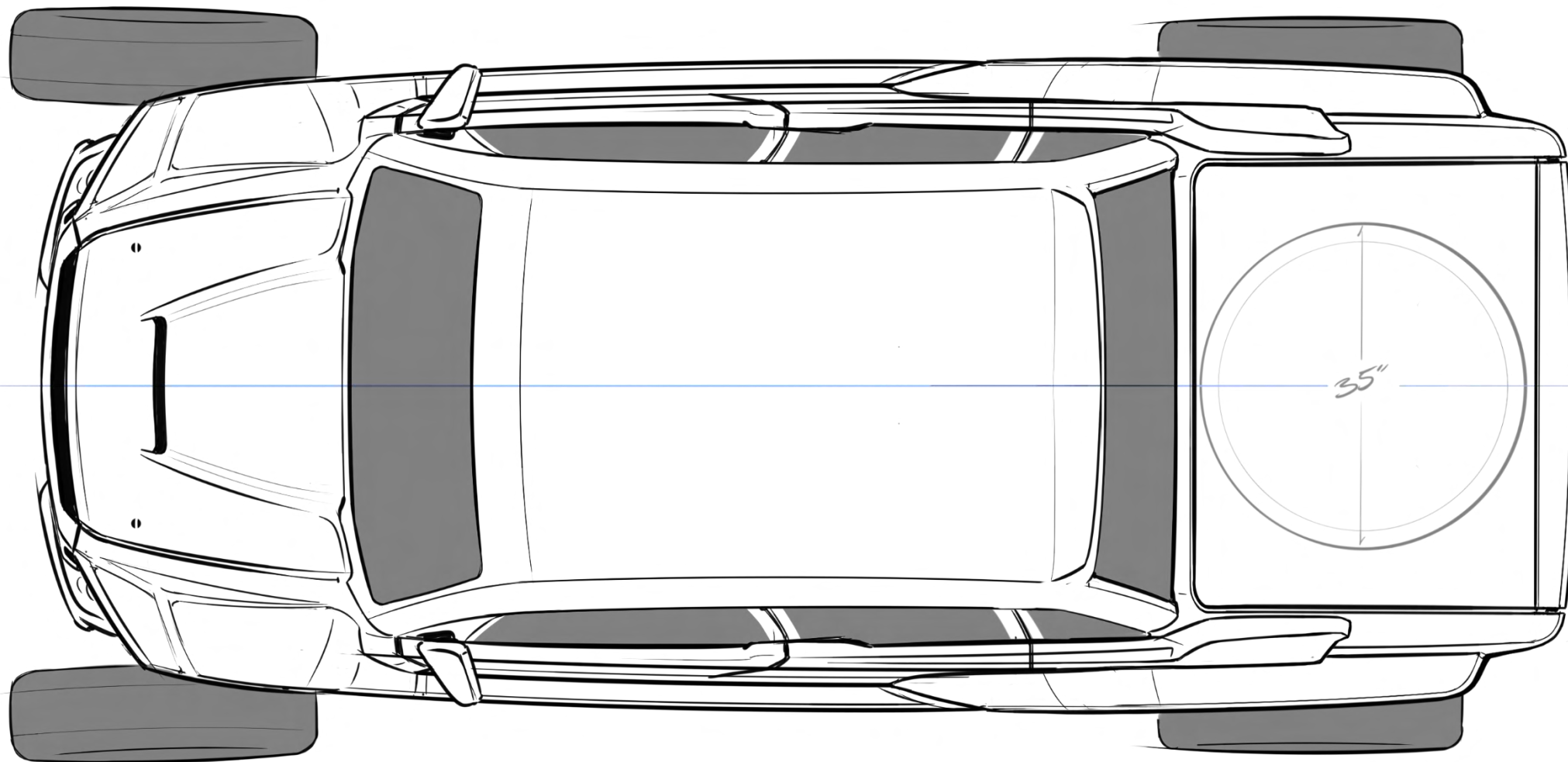
STEERING

CHASSIS

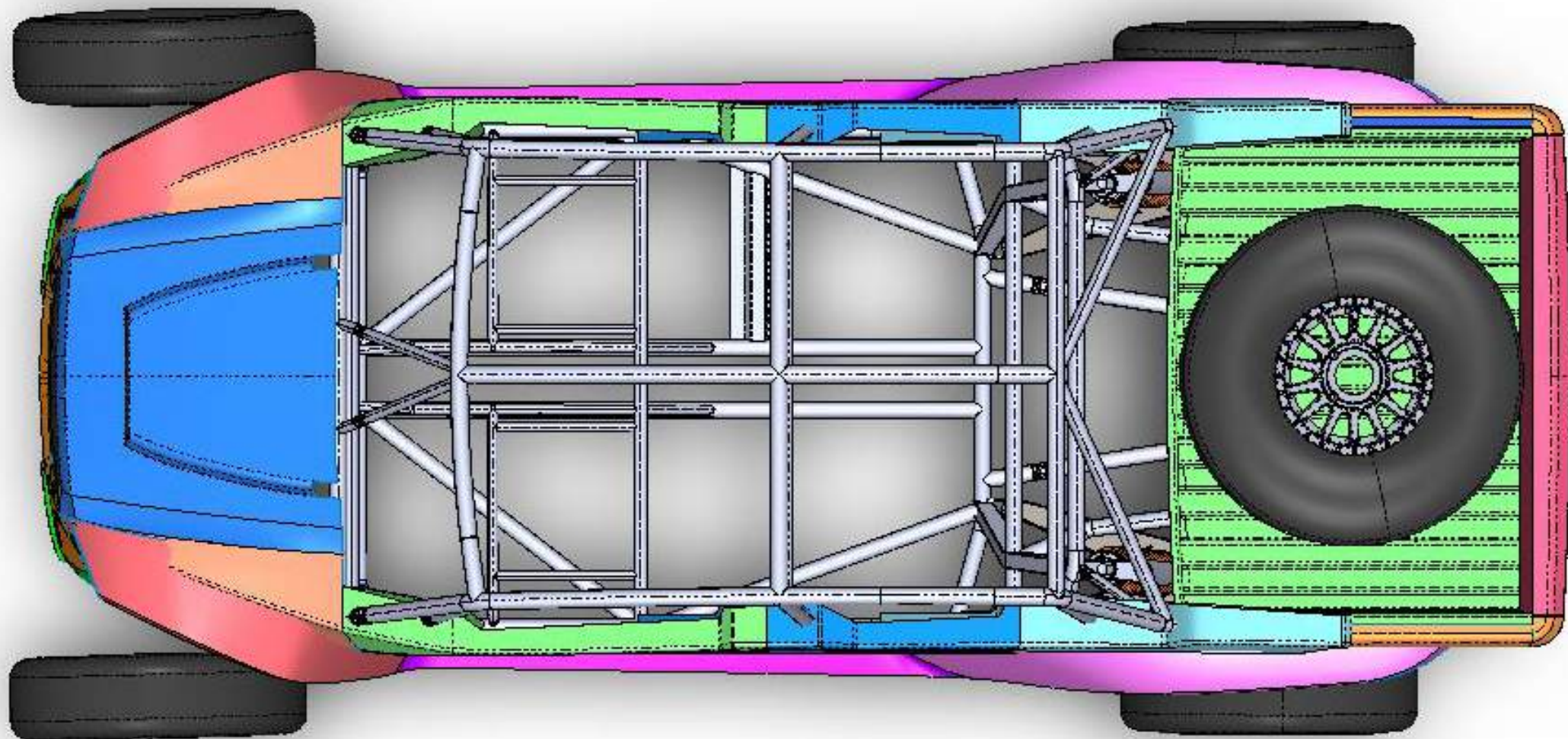
**BODY**

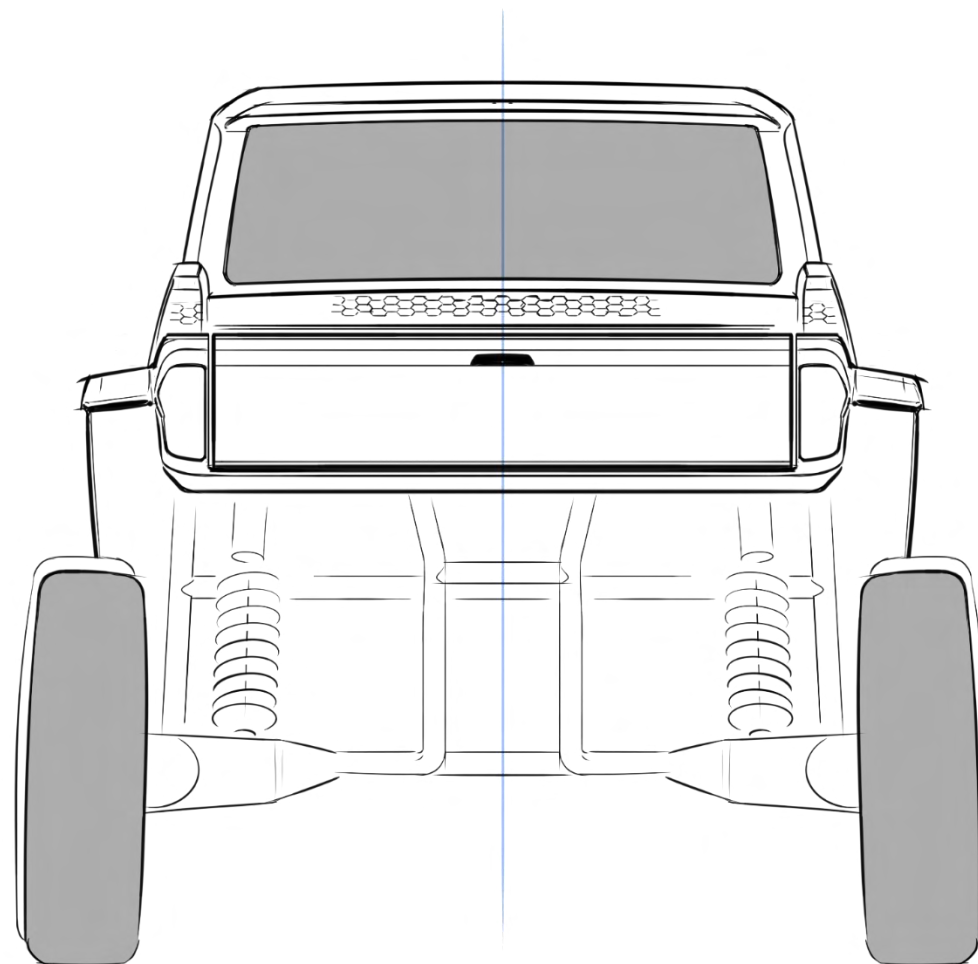
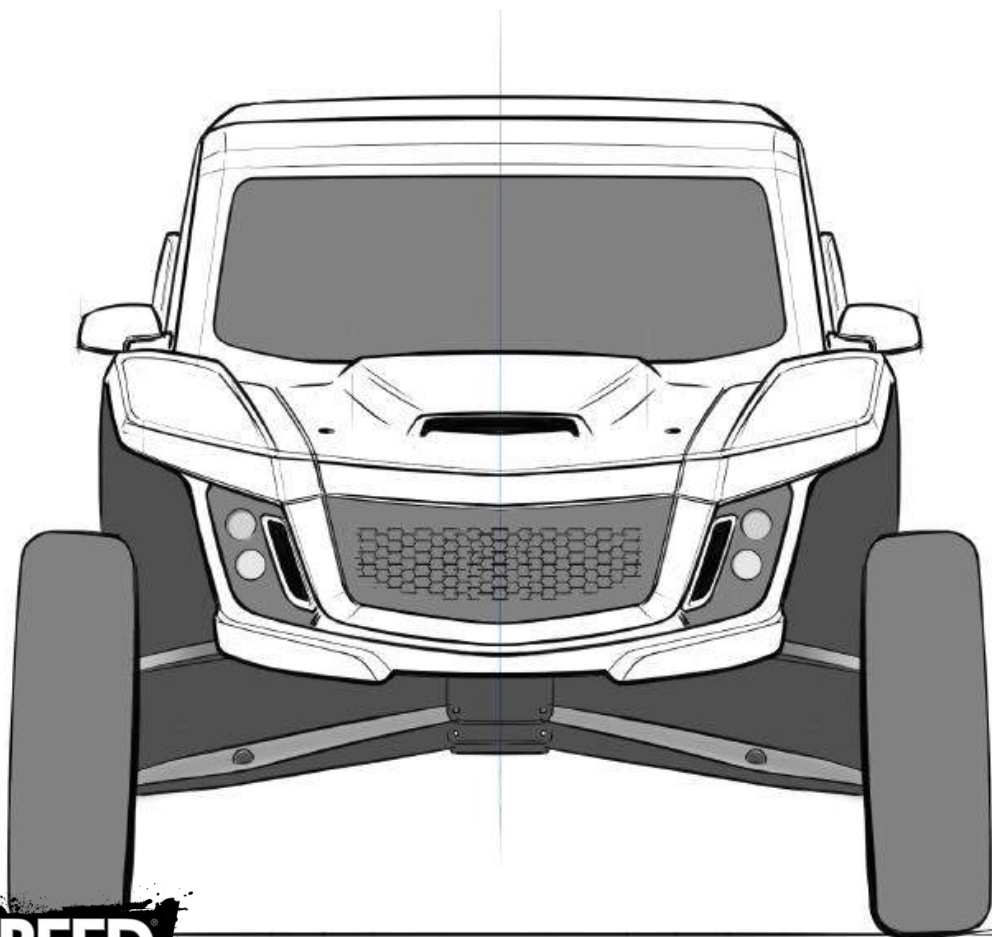
INTERIOR

DRIVETRAIN

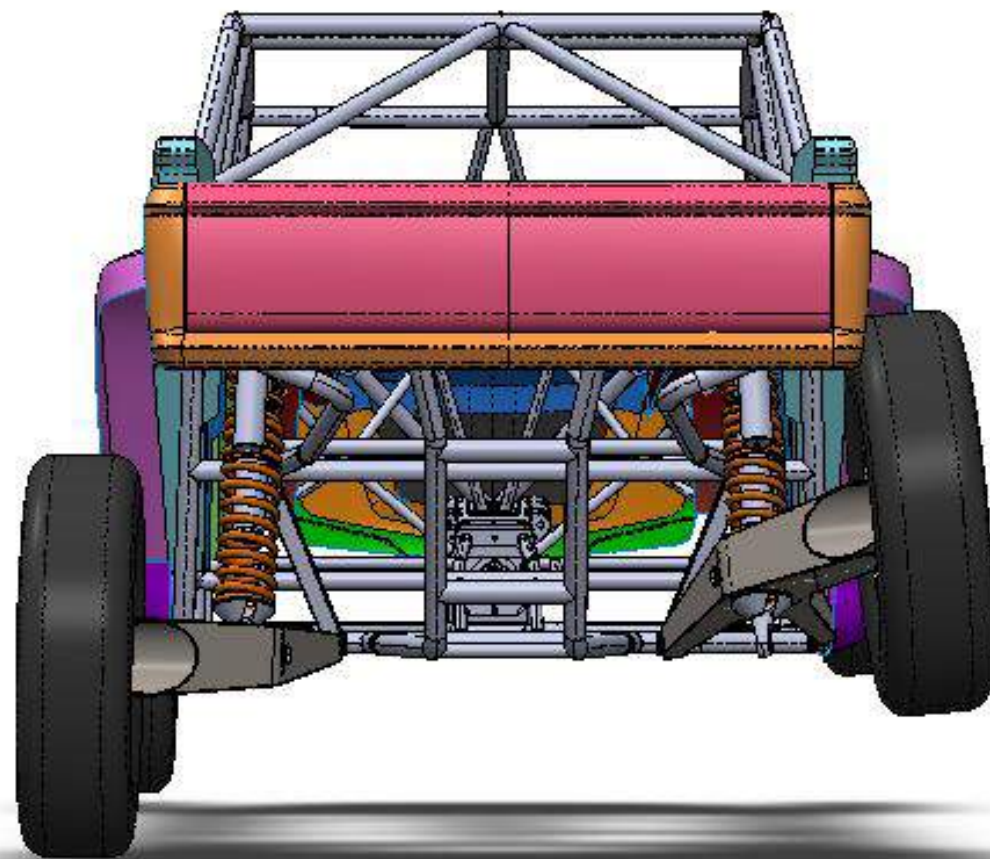
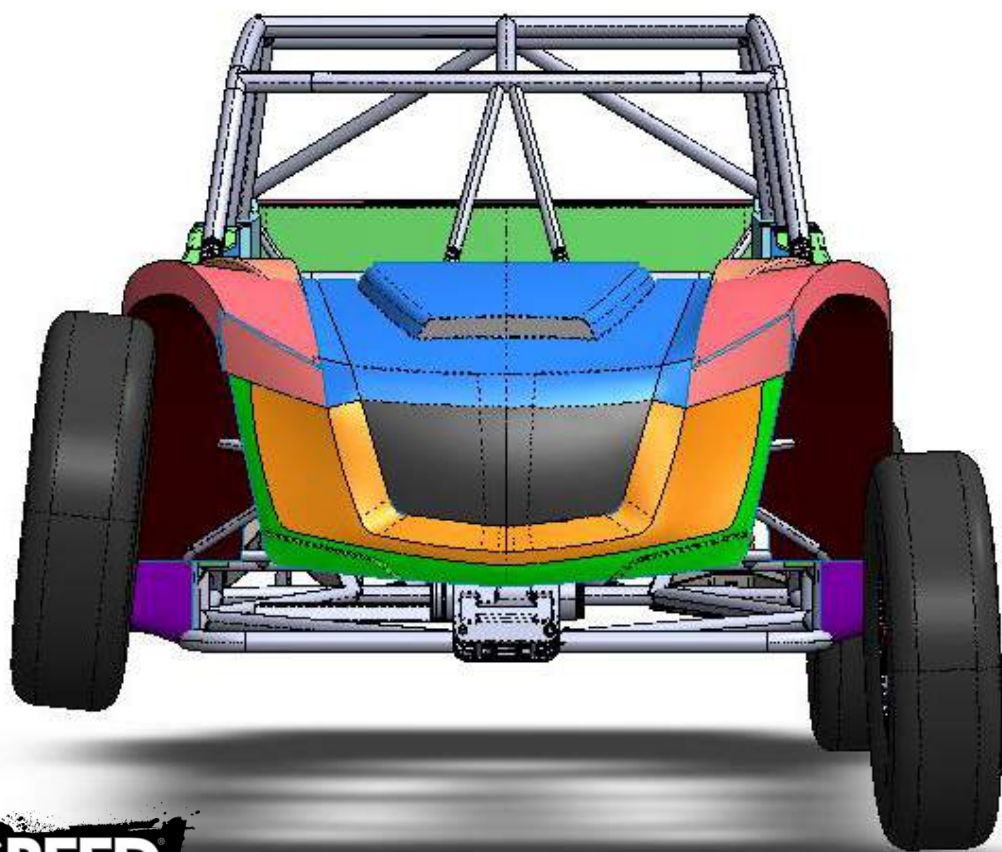










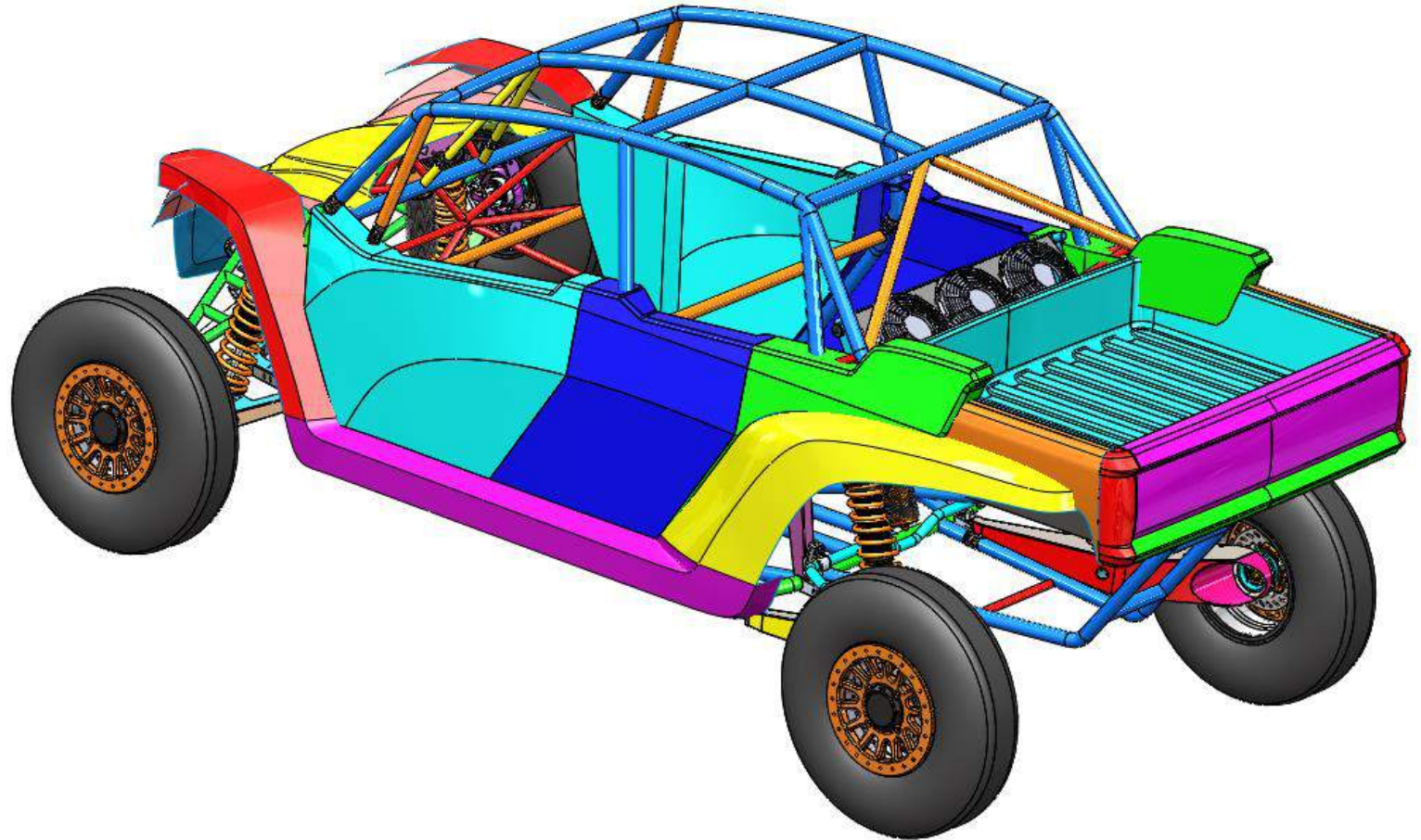
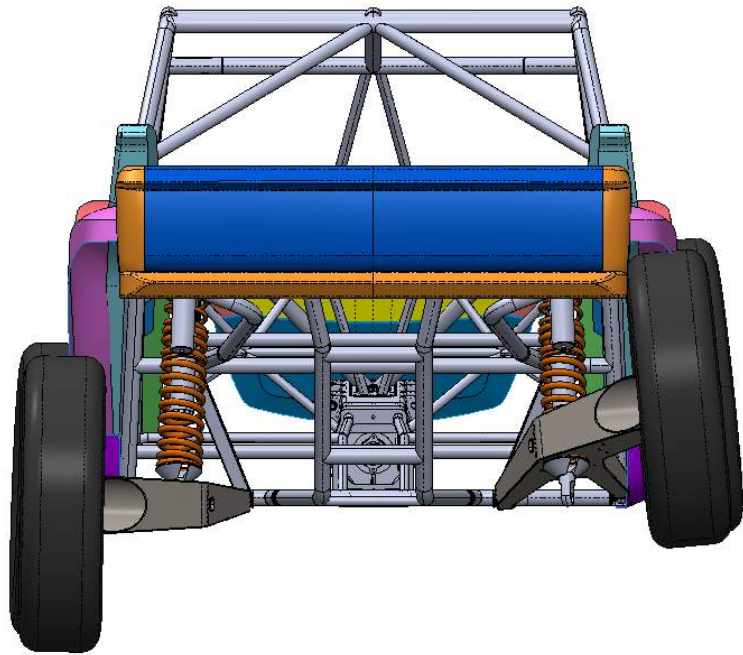


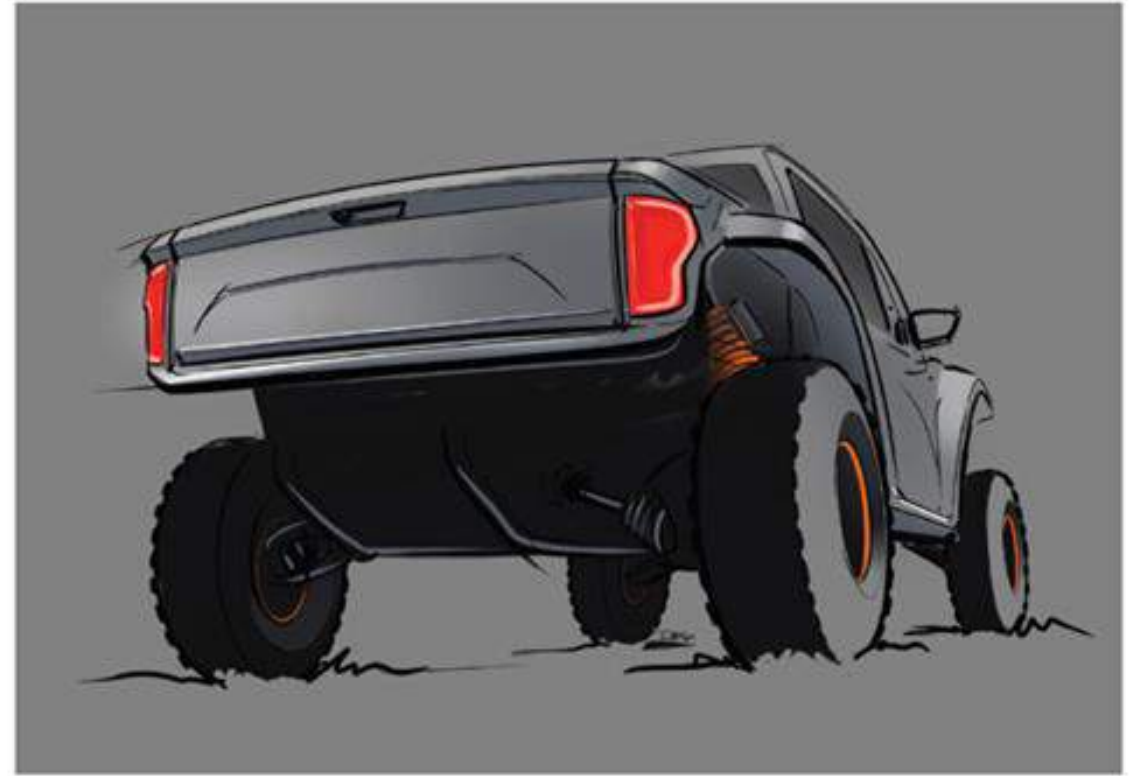
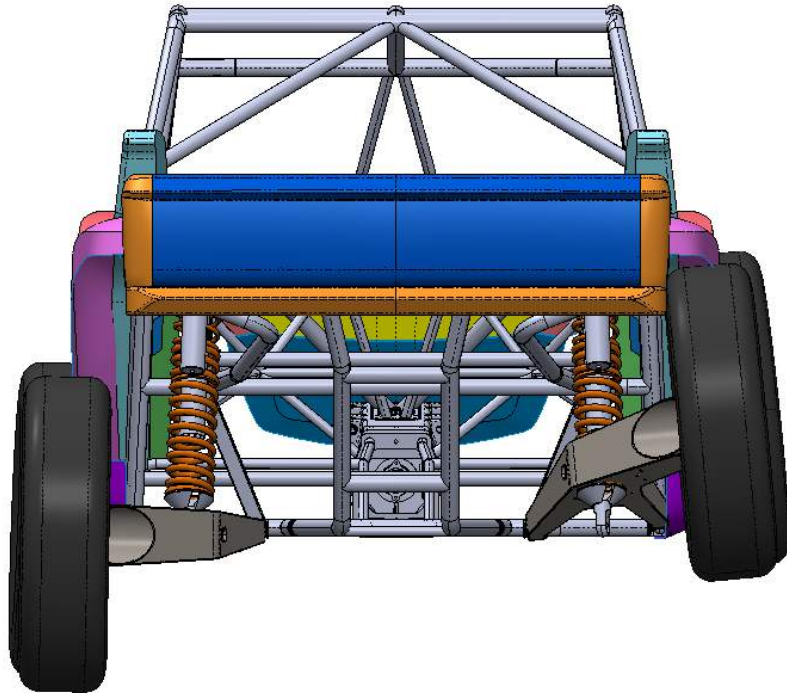
# BODY

**SPEED**  **UTV**

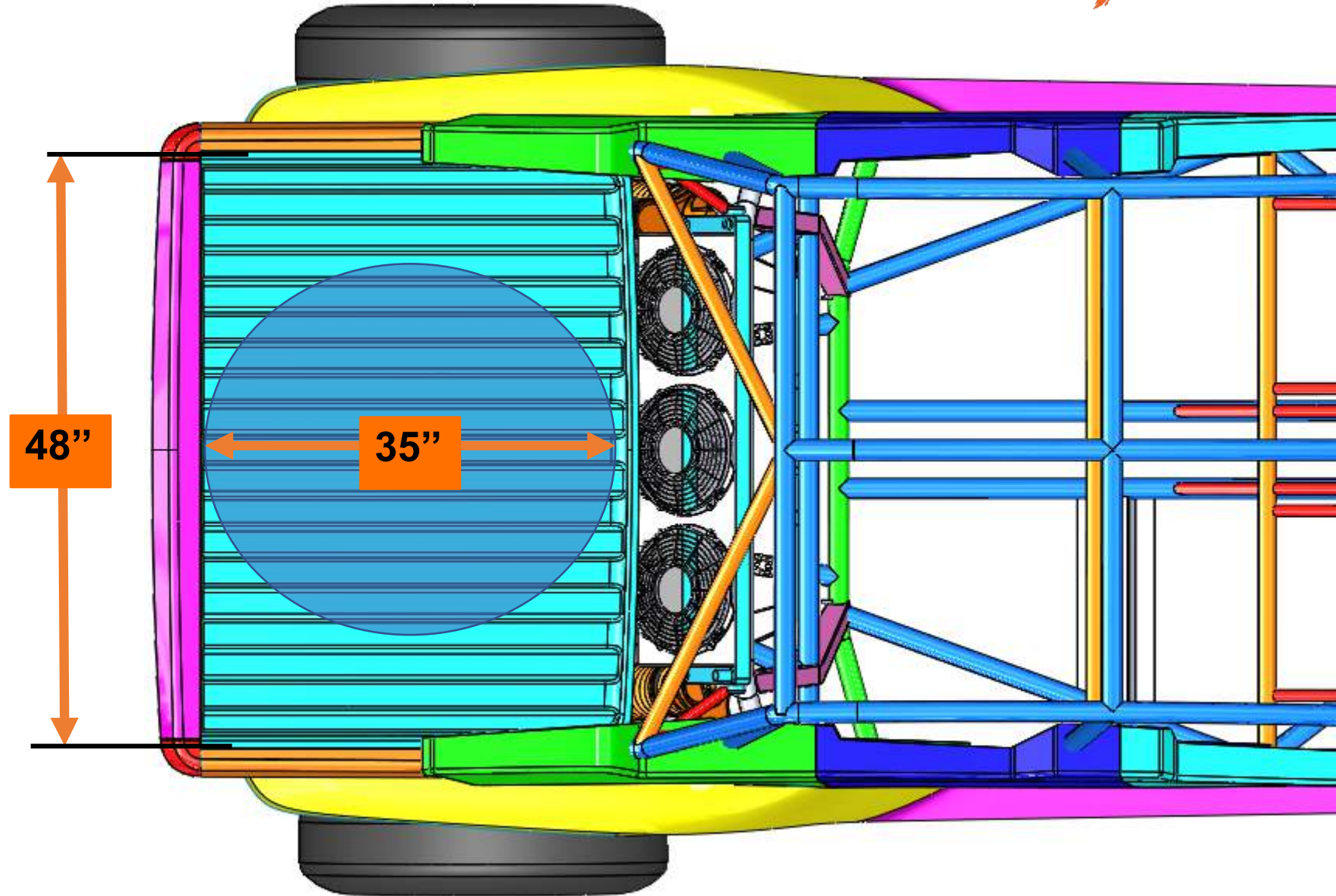








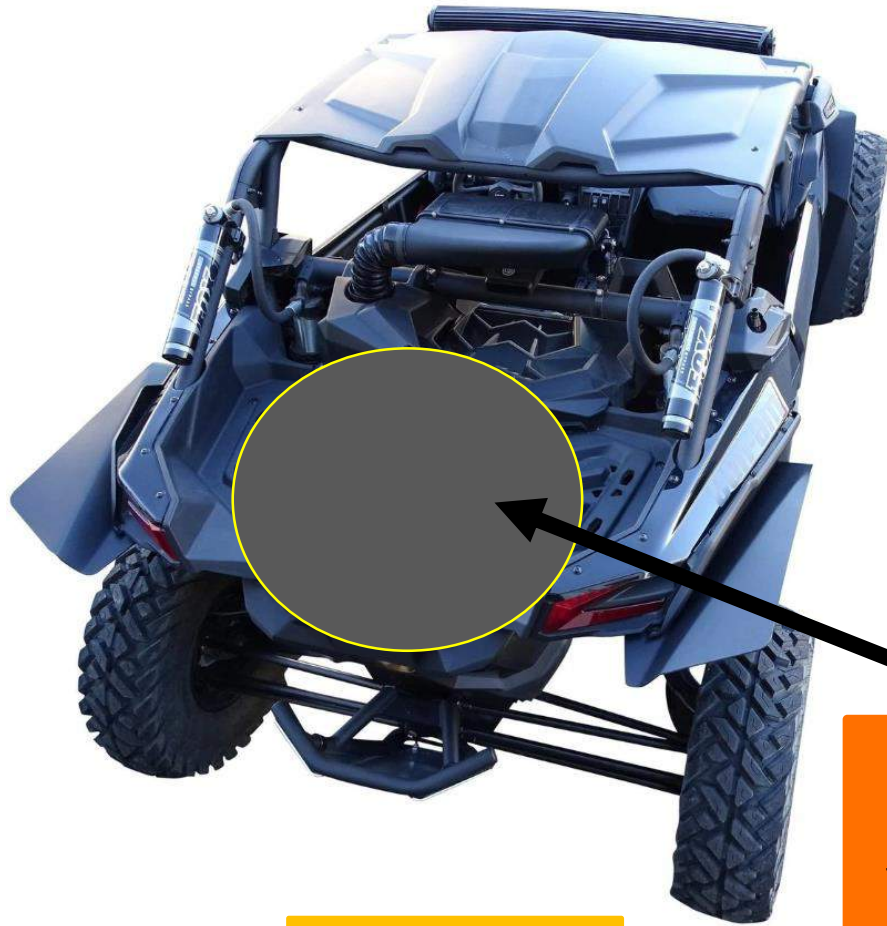
- Bed is sized to accommodate 35" spare plus many additional accessories





## BED COMPARISON

**SPEED**  **UTV**



**CanAm X3**

**Can't even fit  
spare tires in bed**



**Polaris RzR**

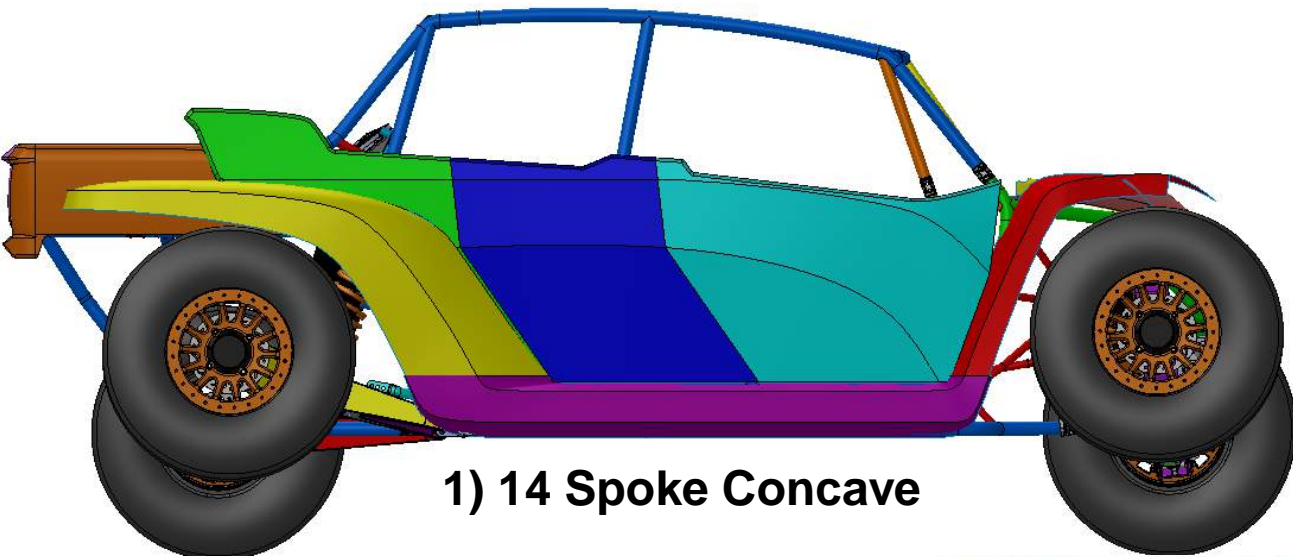
- Standard bolt pattern
- Square shaped for increased viewing window
- Textured plastic & Leather upholstery
- Solid core



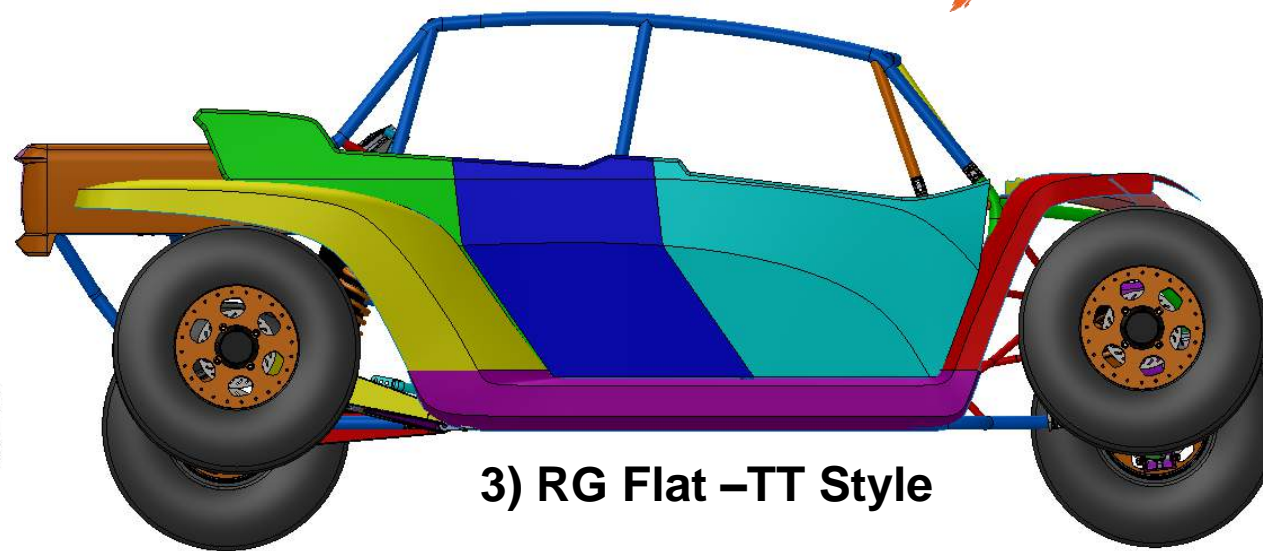


- 10" Configurable Display
- Bluetooth & Wi-Fi connectivity
- Phone screen mirroring (Google maps, maps.me, buddy tracker, etc.)

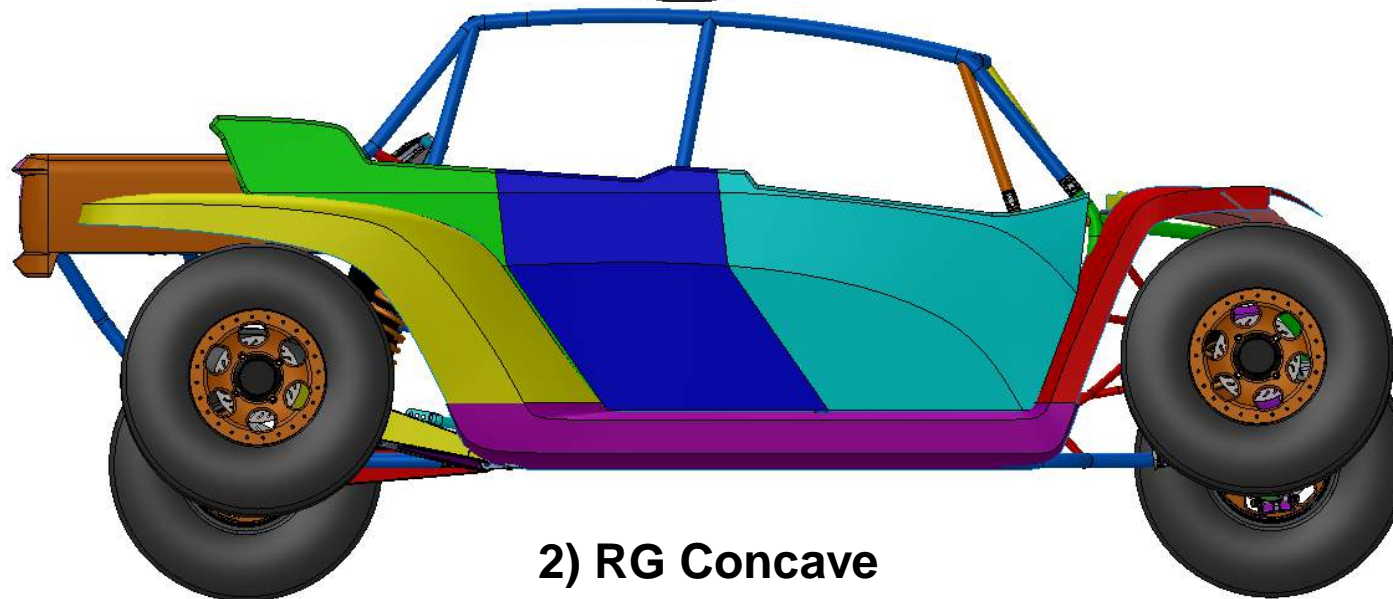




1) 14 Spoke Concave



3) RG Flat -TT Style



2) RG Concave



## WHEELS: VOTE FOR DESIGN

**SPEED**  **UTV**



**1) 14 Spoke Concave**



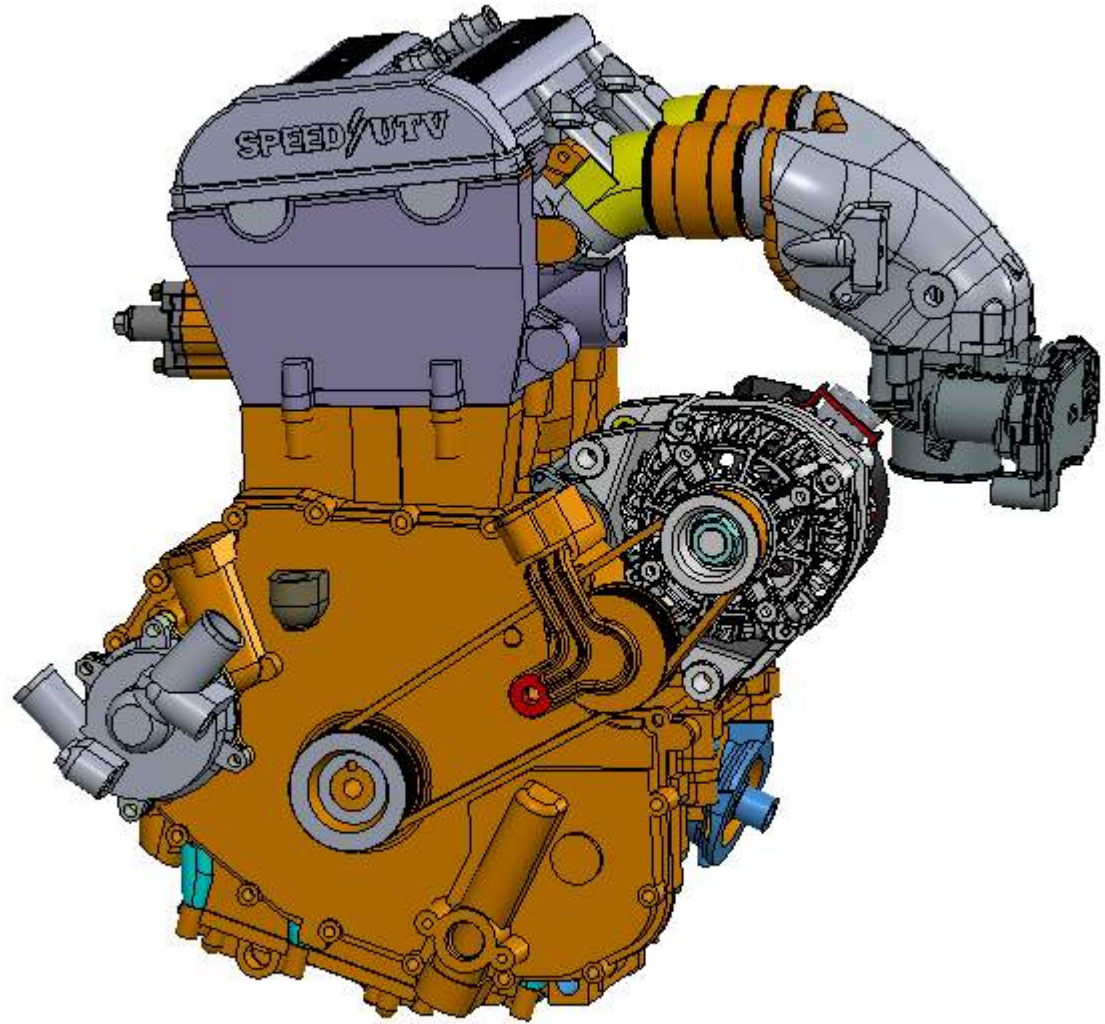
**2) RG Concave**



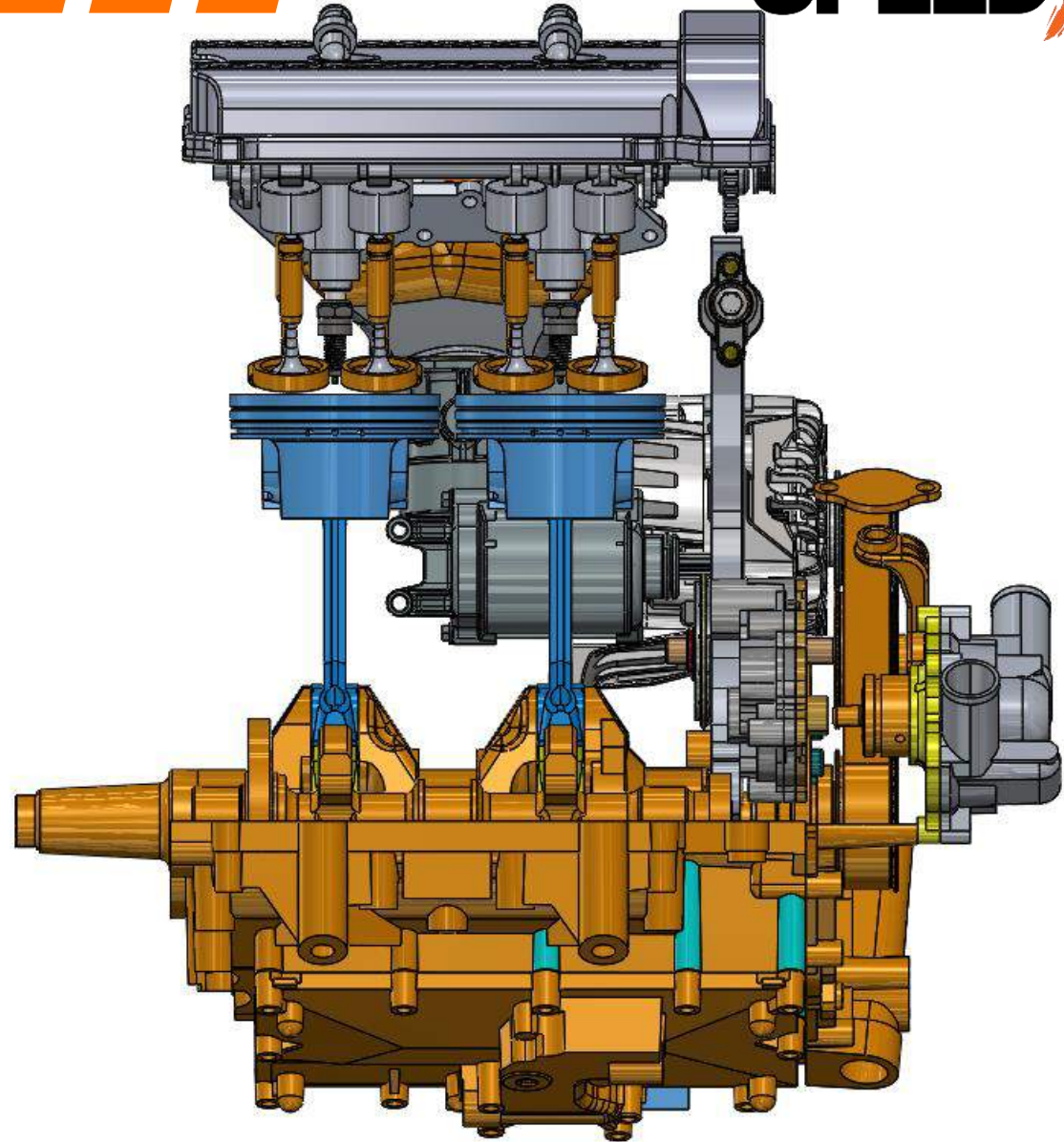
**3) RG Flat – TT Style**



- 230Hp (300 Hp on E-85)
- 999CC
- Turbocharged
- 2 Injectors per cylinder
- 4-Valve DHOC



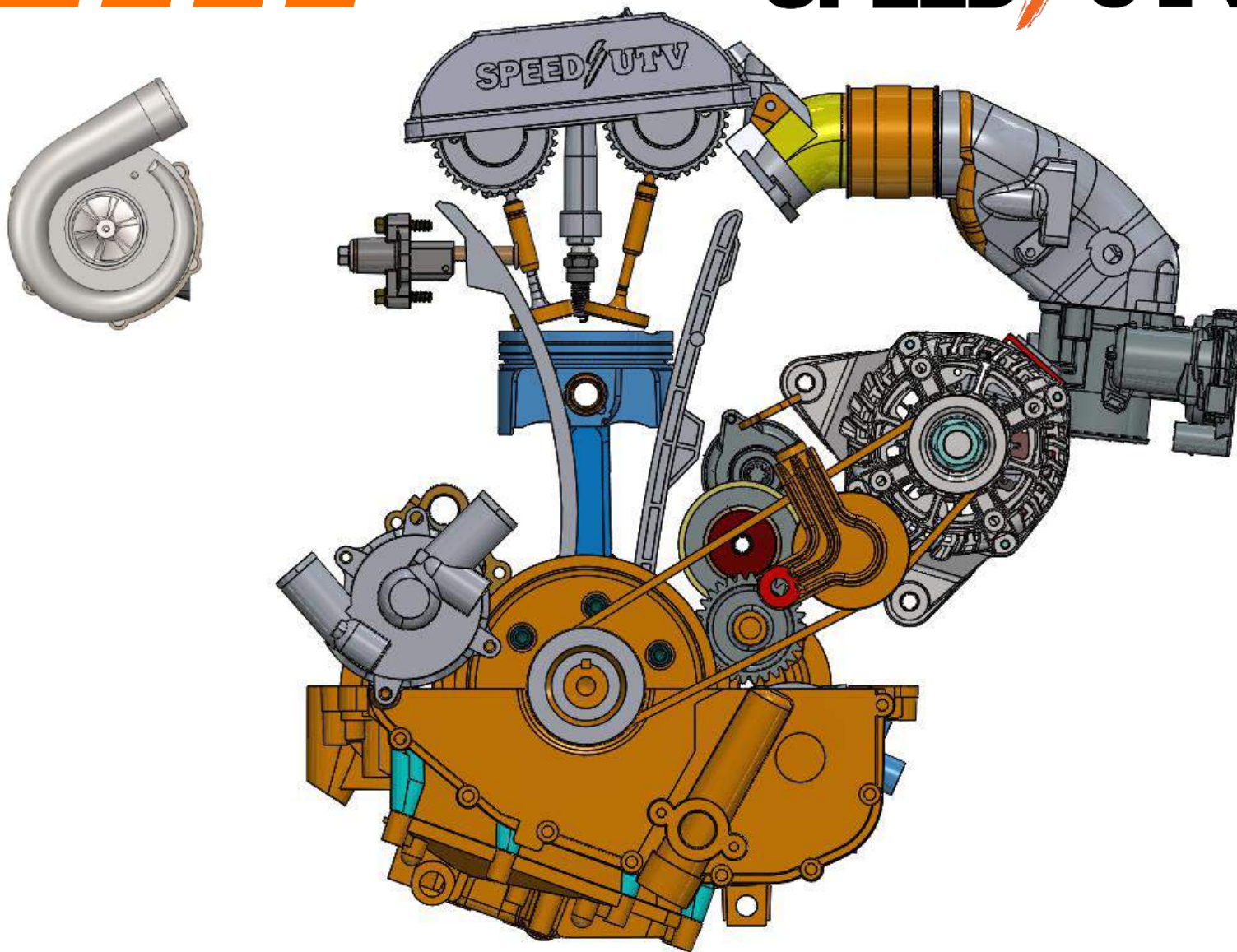
- Bore: 98mm
- Stroke: 66.2mm
- Number of Cylinders: 2
- 4 valves per cylinder
- Forged, Rods, Pistons & Crank



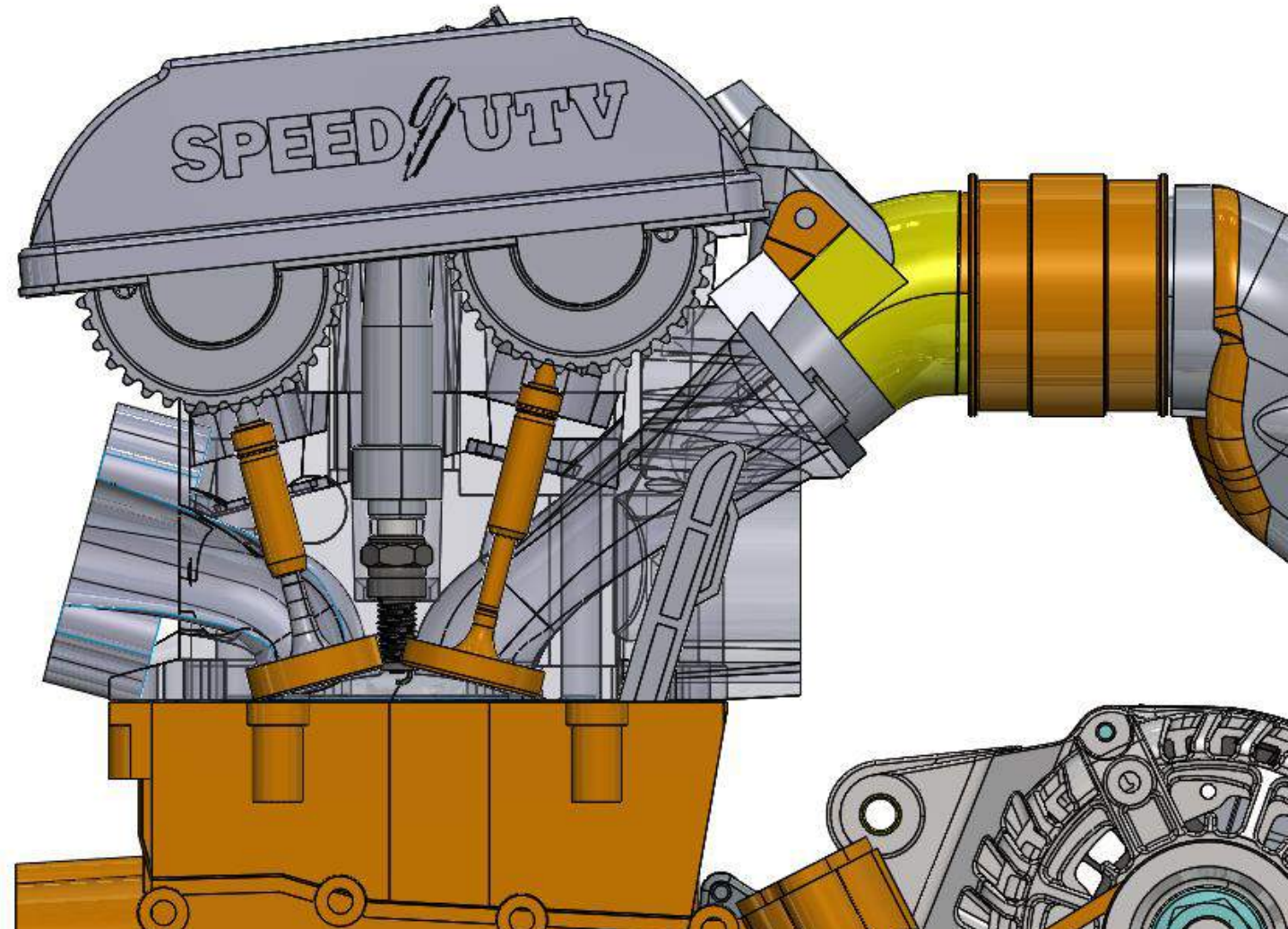


- **Stock: 230HP ~20PSI of Boost on Pump fuel (91 Octane)**
- **“Speed Key”: 300HP unlocks Boost up to ~30PSI**
- **Uses a flex –fuel sensor to detect E-85, adjusts boot accordingly.**

*Notes: All tunes will be CARB and EPA compliant.  
“Speed Key”, requires liability release waiver and  
termination of motor/powertrain warranty*

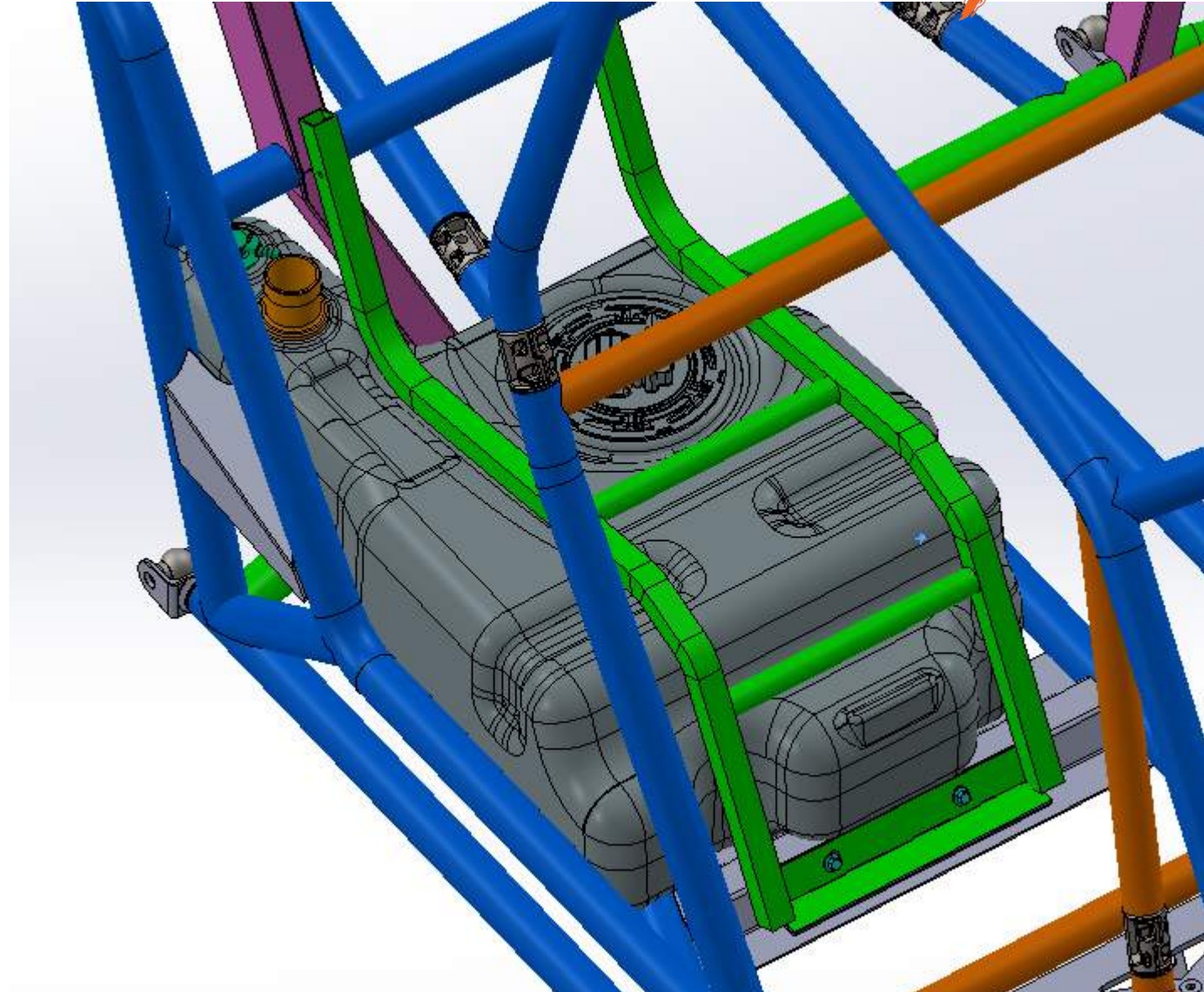


- Ports designed by Indy Car/NASCAR/Racing Motor Engineer
- Flow optimized for maximum efficiency and minimized hot spots
- 12mm Spark plugs
- Dedicated cooling circuits for ports and sparkplug



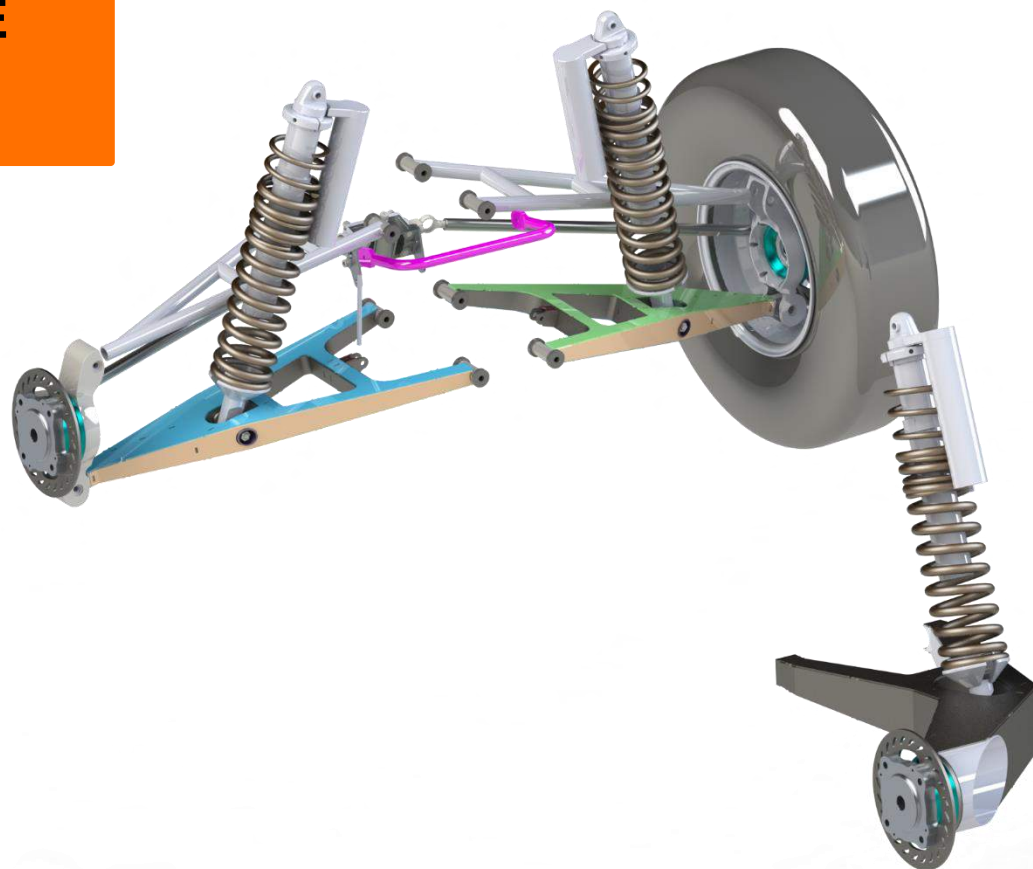


- ~15 Gal Capacity
- High flow fuel pump
- Integrated pressure release and roll over valve

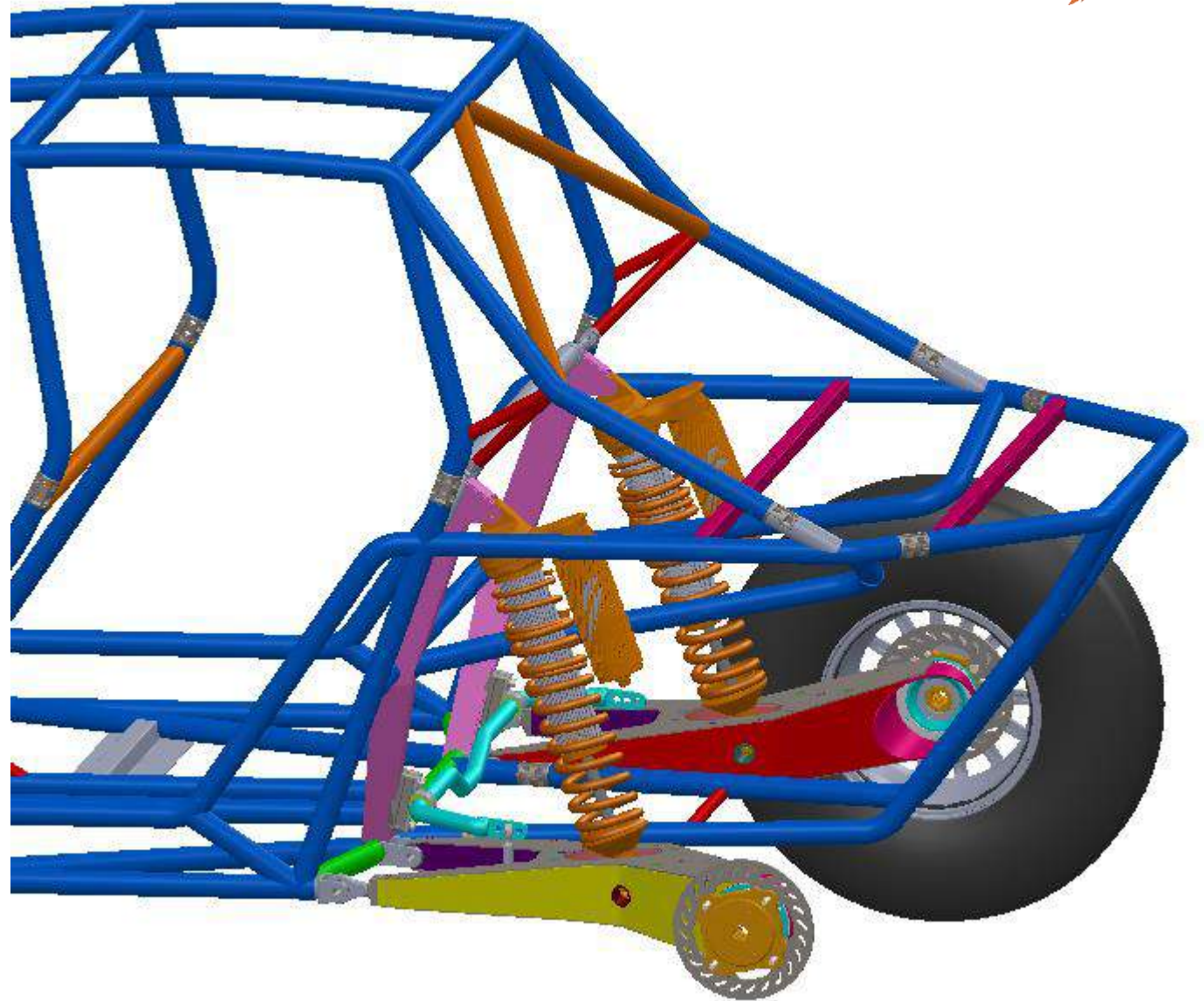




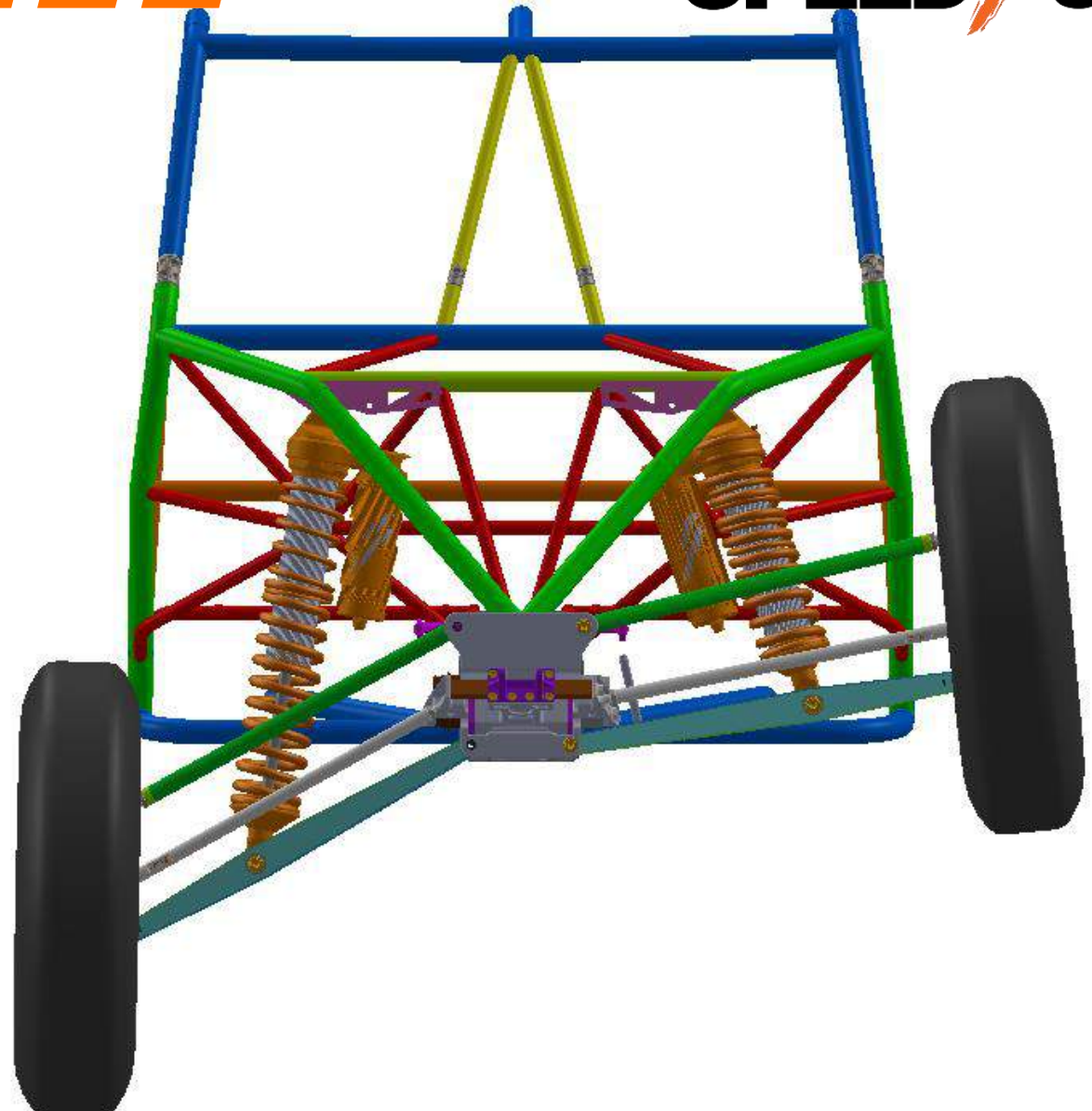
- 25" OF USABLE TRAVEL



- **Patented - Reversible Semi-Trailing arm**
- **Shock angle optimized for maximum rising rate**



- Patented -Reversible LCA, UCA
- Shock mounted on lower control arm
- Shock angle optimized for maximum rising rate

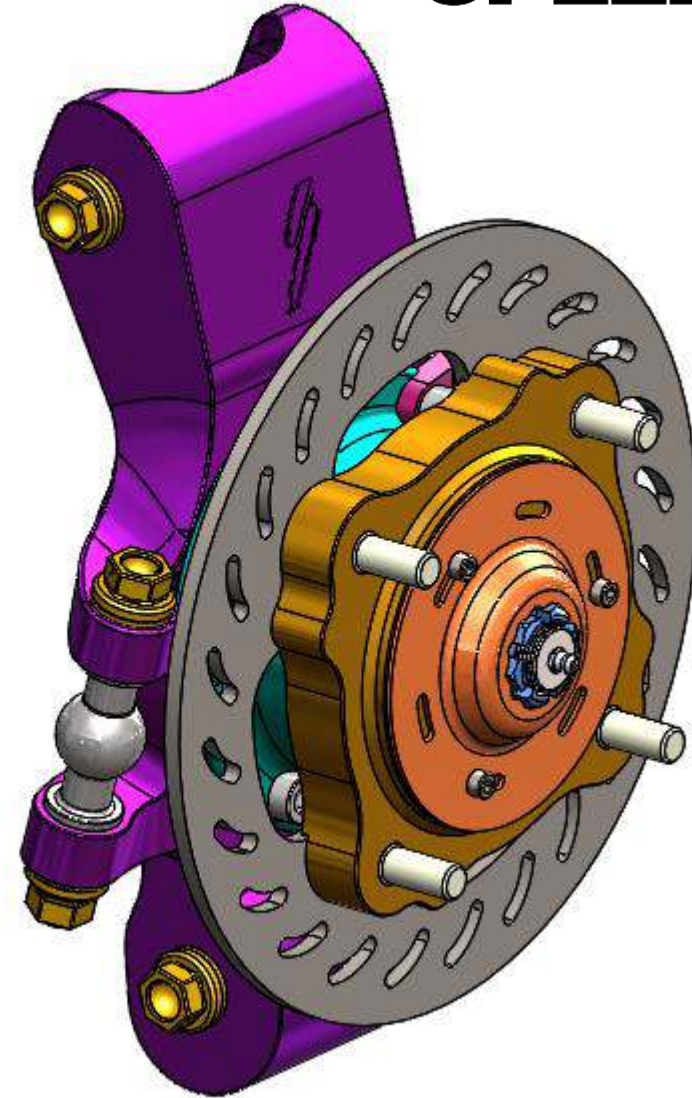
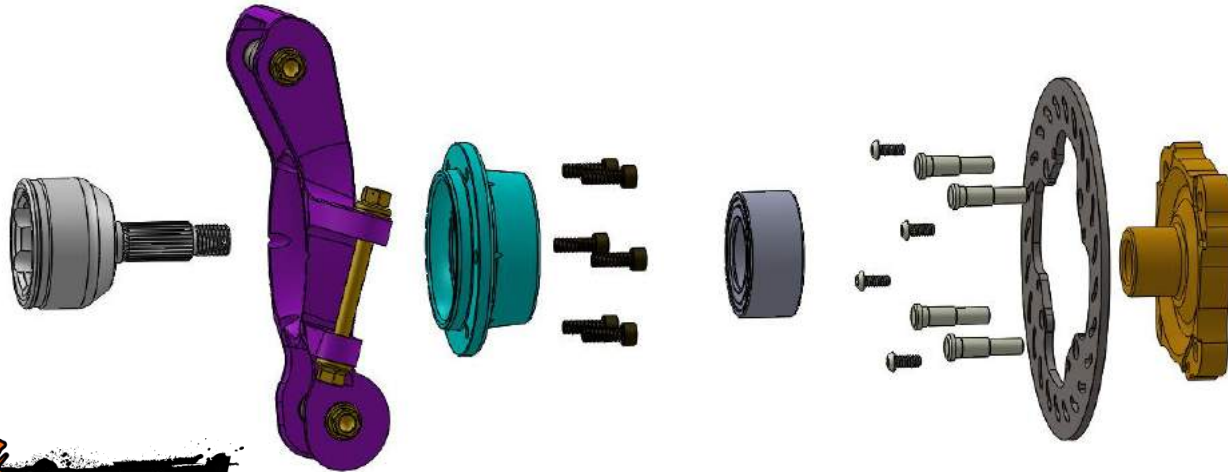




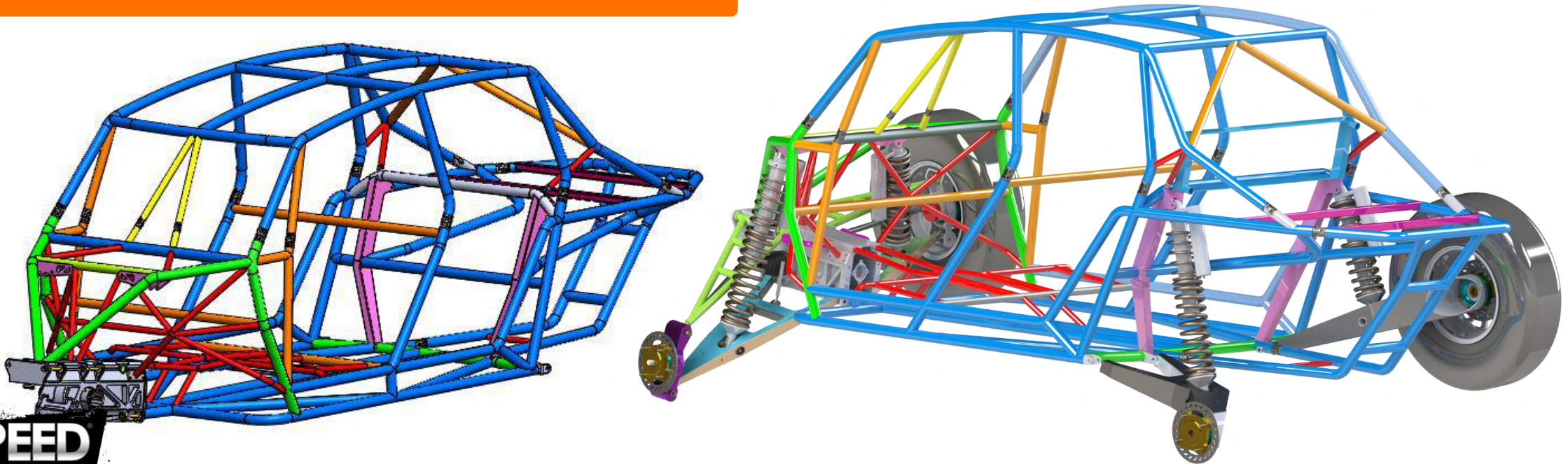
## SHOCK SPECS

**SPEED**  **UTV**

- Forged Aluminum Upright
- Universal Hub and bearing (all 4 corners)
- Fully shouldered bolts



- Seamless tubing
- Added factory FIA style A-Pillar support
- Patented V-Bars front & Rear
- Patented Roof Spine





END OF PRESENTATION

**SPEED**  **UTV**

Drivetrain Presentation Coming: 04/15/2020



GENERAL

SUSPENSION

STEERING

CHASSIS

BODY

INTERIOR

DRIVETRAIN

**New Live Stream Every  
Wednesday evening**

**Stay tuned to our media  
channels for updates  
@SpeedUTV**

**Place your preorder:  
[www.SpeedUTV.com](http://www.SpeedUTV.com)**



**Design Presentation Document**

**SPEED / UTV**