



SPEED UTV DESIGN PRESENTATION

4-1-20

Robby Gordon – Todd Romano

Daniel Granger – Kyle Swoboda

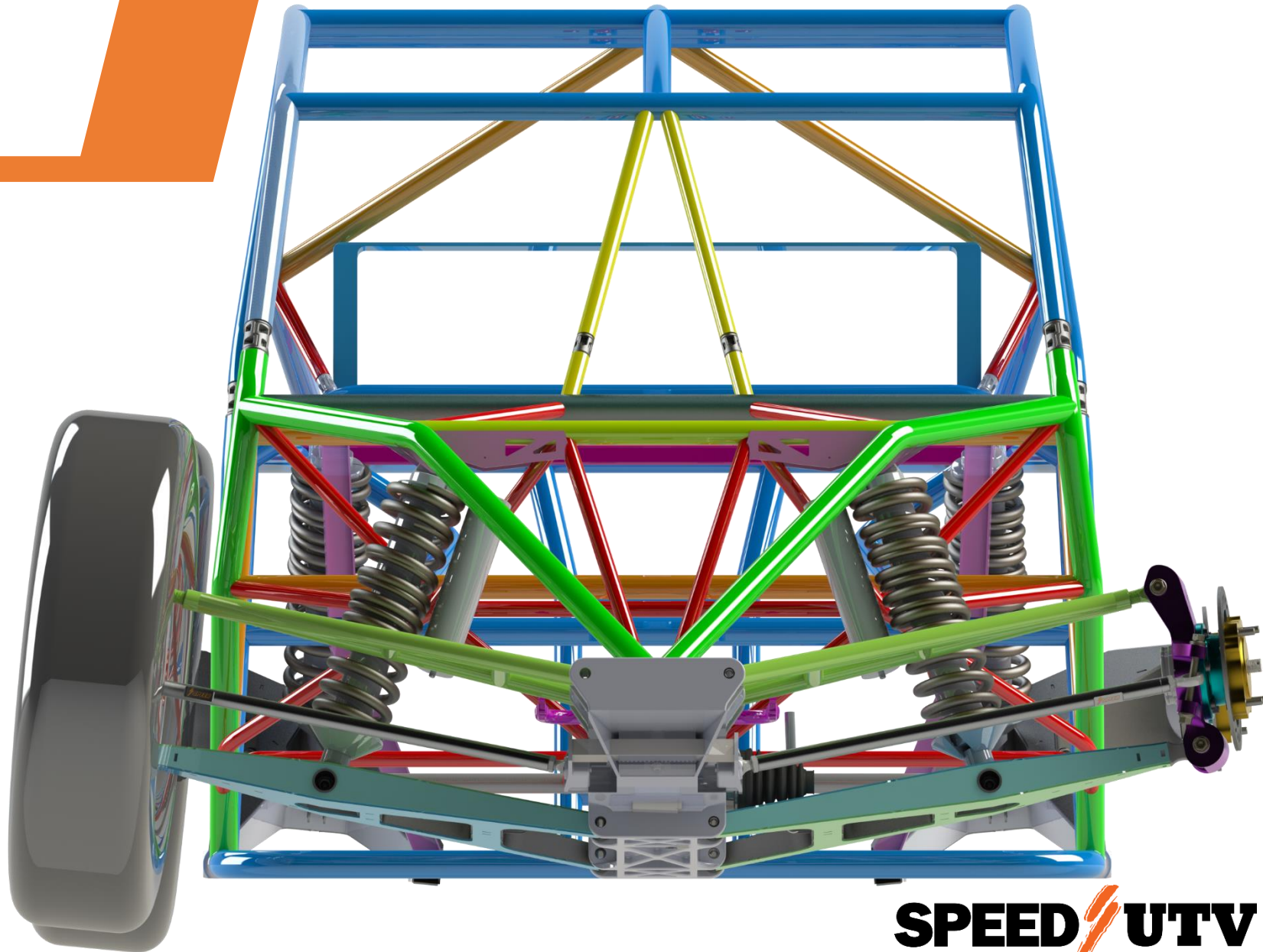
SPEED UTV – FOUR SEATER



SPEED/UTV


FAST STATS:

- **Horsepower: 230hp-300hp (e85)**
- **Wheelbase: 120"**
- **Ground clearance: 15"**
- **32" tires stock , will clear up to 35" tires**



SPEED/UTV


QUESTIONS FROM LAST TIME...

Brian Border  Beadlock wheels were mentioned in Robby's presentation but I was told they weren't coming with them. Which is correct?

[Like](#) · [Reply](#) · 1d

A: Limited edition cars will come with bead-locks, bead-locks will be available as an upgrade option later



Da Anger  What is the projected release date? Also will there be an HVAC model or just an add on later?

A: projected delivery date is Thanksgiving 2020 for the first batch, and will be delivered based on pre-order number

HVAC will be another model not available until summer 2021

QUESTIONS FROM LAST TIME...



Shawn Murphy 🖐️ Is the engine being feed by a single throttle body or a dual???

Like · Reply · 1d

A: Single throttle body, dual injectors per cylinder



Brian Border 🖐️ Just a few weeks ago it was said the motor wa to be the Z1 snowmobile engine. What changed all of a sudden?

Like · Reply · 1d

A: Motor is Speed designed and built. At the end of the day, I couldn't be potentially handicapped by an engine supplier that could eventually become a competitor.

QUESTIONS FROM LAST TIME...



Nate Pearson 🖐️ On almost all the current turbo SxS out, belt life is a concern. Is there anything new in this design that will help with longevity/reliability?

[Like](#) · [Reply](#) · 1d

A: we are currently working directly with top belt manufactures to ensure our belts have cutting edge performance and reliability. We will also have an infrared belt temp sensor and we can control the fly by wire throttle to manage belt life (this will be an option with a manual override for racers).

Nate Pearson 🖐️ **Todd Romano** is there a 3 speed transmission or just high/low range?


[Like](#) · [Reply](#) · 23h

Transmission will be discussed in a live stream update in the weeks to come..

QUESTIONS FROM LAST TIME...

 **Brian Katz** 🖐️ If the UTT is going to be 10" shorter, where will the 10" be lost at?
Like · Reply · 21h

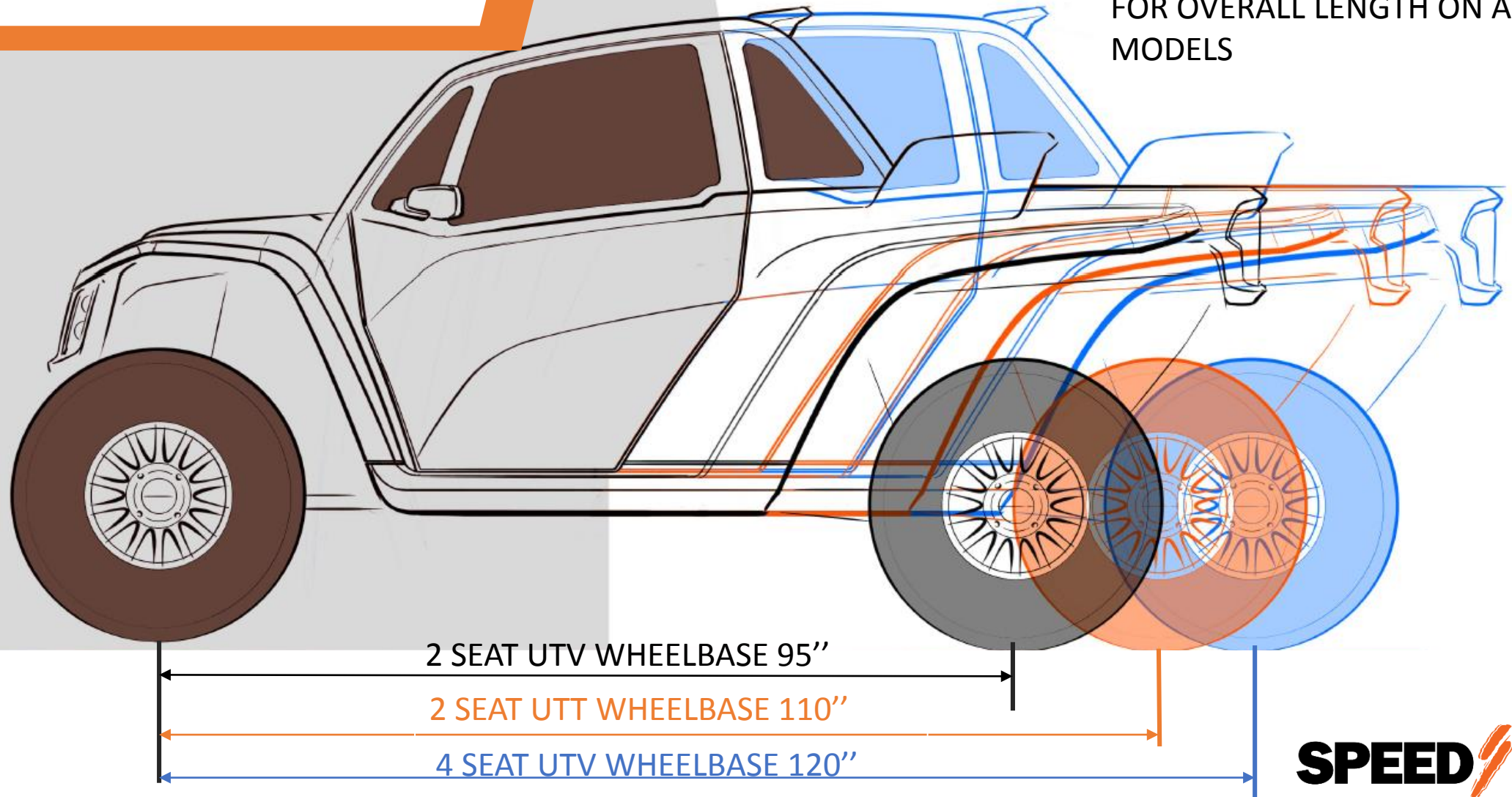
All the changes in wheelbase happen between the A-post and C-post (page 17)

 **Joden Werlin** You stated the 4 seat dimensions last week but can you expound for us planning which trailer to purchase etc. Request not only wheelbase but overall length of 2 and 4 seat models as well as confirm 77" is wheel bulge as rg stated.

Add 41" to wheelbase for overall length, max vehicle width is 77" to the bulge. |

WHEELBASE

NOTE: ADD 41" TO WHEELBASE
FOR OVERALL LENGTH ON ALL
MODELS



SPEED  UTV

QUESTIONS FROM LAST TIME...



Brian Katz 🙋 Thanks Todd, are the cages coming powder coated from the factory? If so will they come tabbed for things like light bars, dust lights, whips and dome lights??? If no can we order the cage raw?

Like · Reply · 20h

Cages come powder coated from the factory, dome-light, whip light and antenna mount are integrated and light bar and rear chase light mounts are clamp on.



John McKean 🙋 Can you post more photos and show locations of the electronics as they will be delivered to us? And can you tell us how many aux switches there will be? We want to plan for mods such as Nav, switch, intercom, etc.

Like · Reply · 19h

The car will be pre-wired for accessories including: Nav, intercom, speakers and other accessories. More details will come with the interior presentation.

QUESTIONS FROM LAST TIME...



Felix El Nando 🖐️ Can Robby Gordon Sign the First 500 cars???? That would be Awesome!!!! True Special Edition Cars !!!

Yes I will, thank you for the compliment.



Active Now

Steve Poole 🖐️ Todd, what has changed in your new package vs the others to be a reliable race drivetrain with 300hp...i.e. the differentials, belt, clutch, axles, C.V.'s. I understand rolling into the throttle, but it's the Whoops at open throttle that pounds the drivetrain.

Like · Reply · 13h

This will be covered in the drivetrain presentation in the next two weeks, but we have addressed everything you mentioned above.

QUESTIONS FROM LAST TIME...



John Mckean 🖐️ When will we be able to see and choose our color options?

Like · Reply · 10h

Our goal is to have Color options available online May 1st

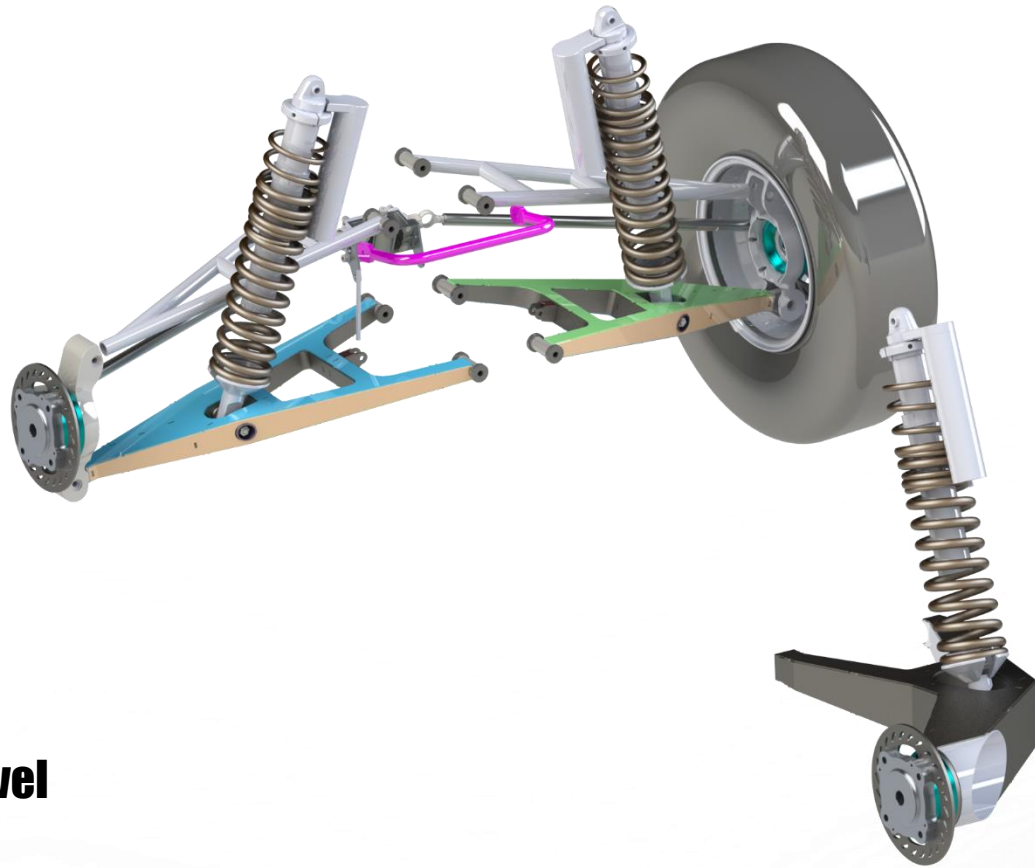
Like · Reply · 1d

El-Todd Hainsworth With the 300hp tune installed, can it be switch to back and forth to the 91octane :

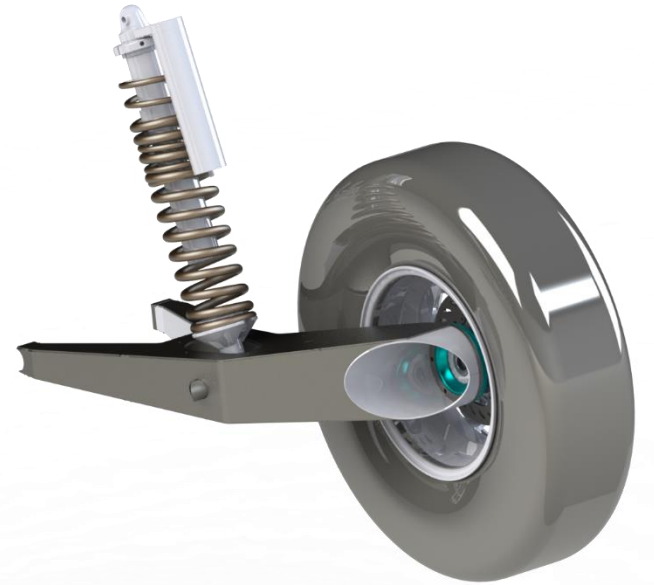


Yes, details will be covered in this presentation|

SUSPENSION



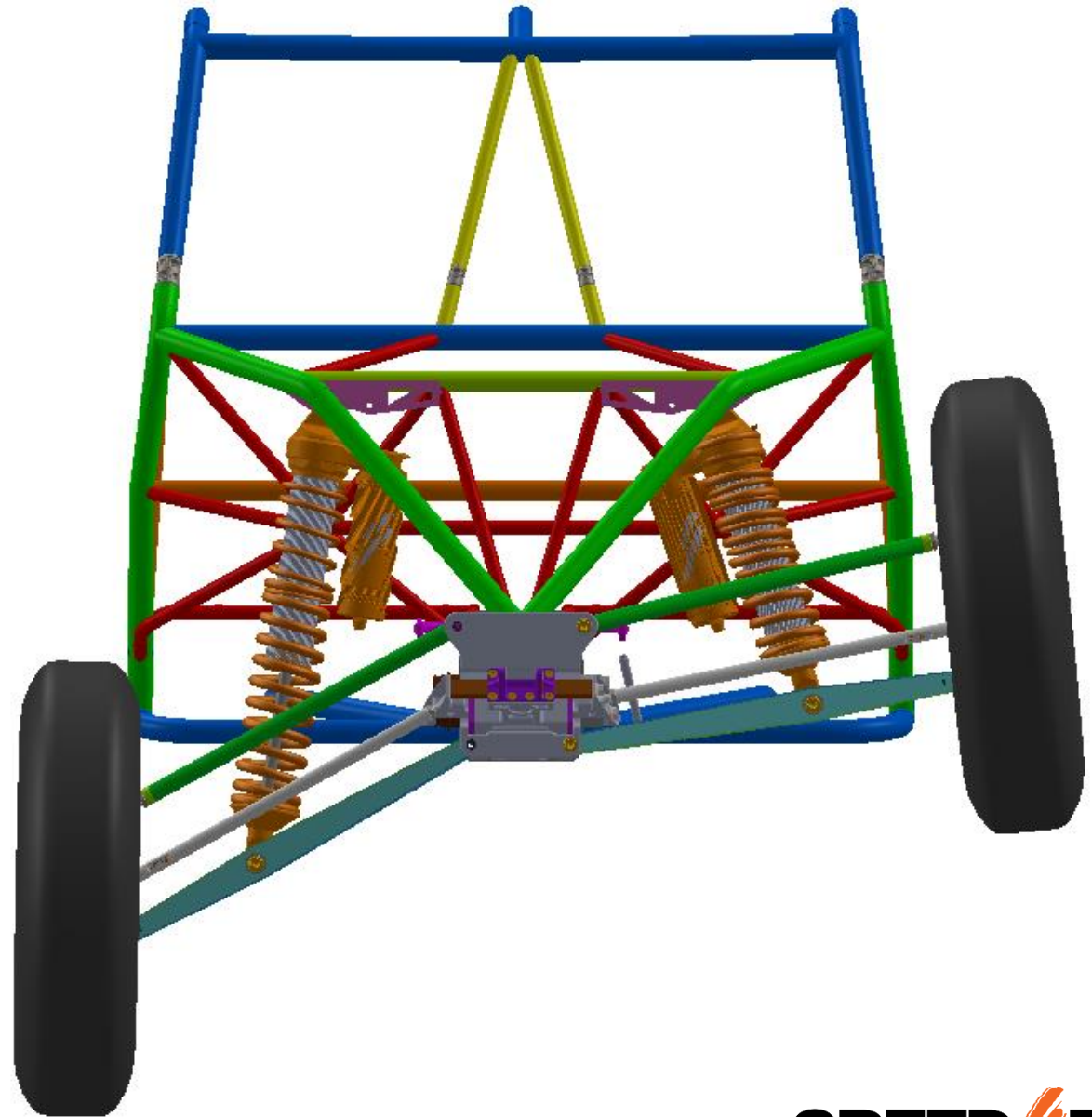
25" of usable Travel



SUSPENSION

Front Suspension Specs:

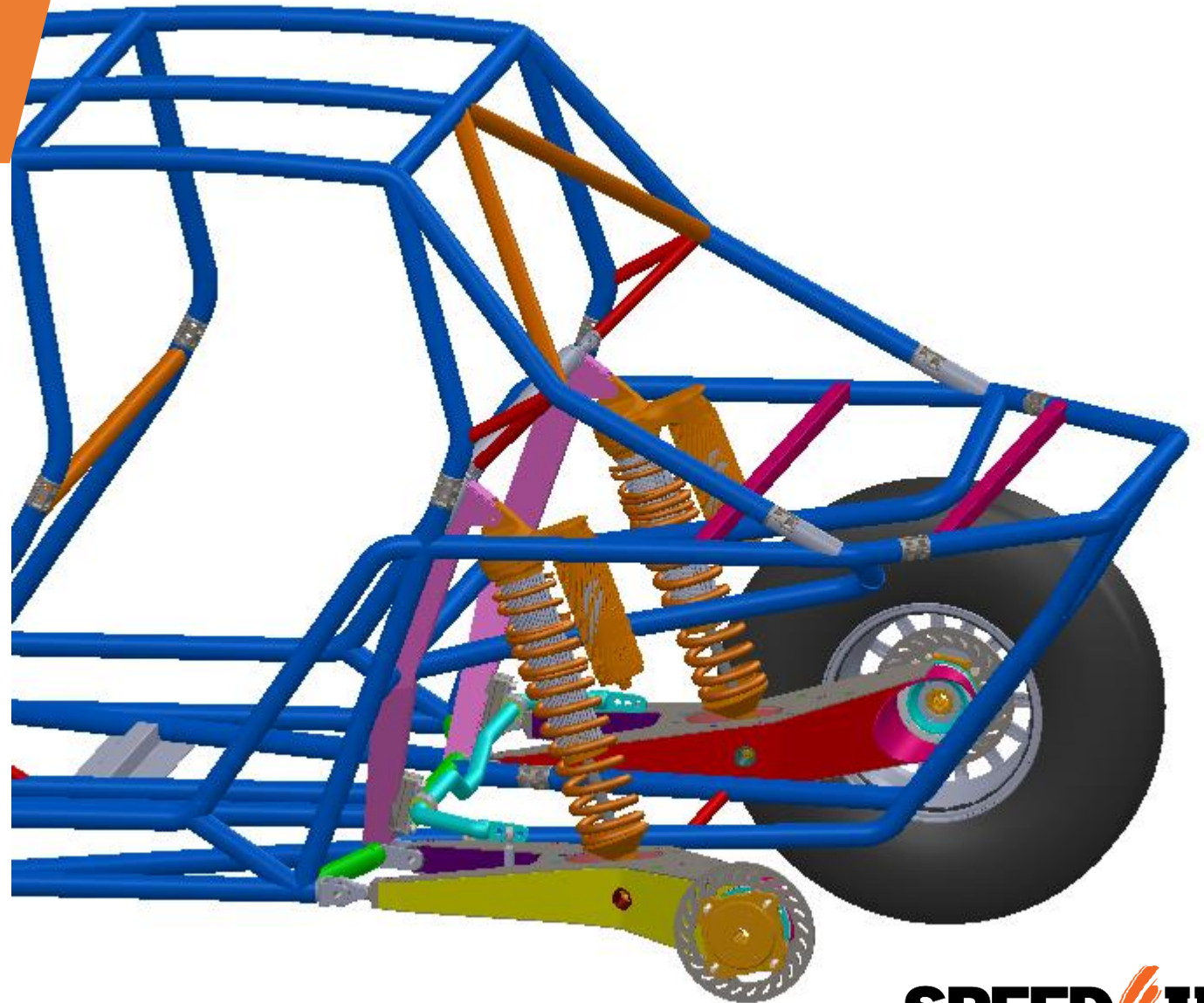
- Patented -Reversible LCA, UCA
- Shock mounted on lower control arm
- Shock angle optimized for maximum rising rate



SUSPENSION

Rear Suspension Specs:

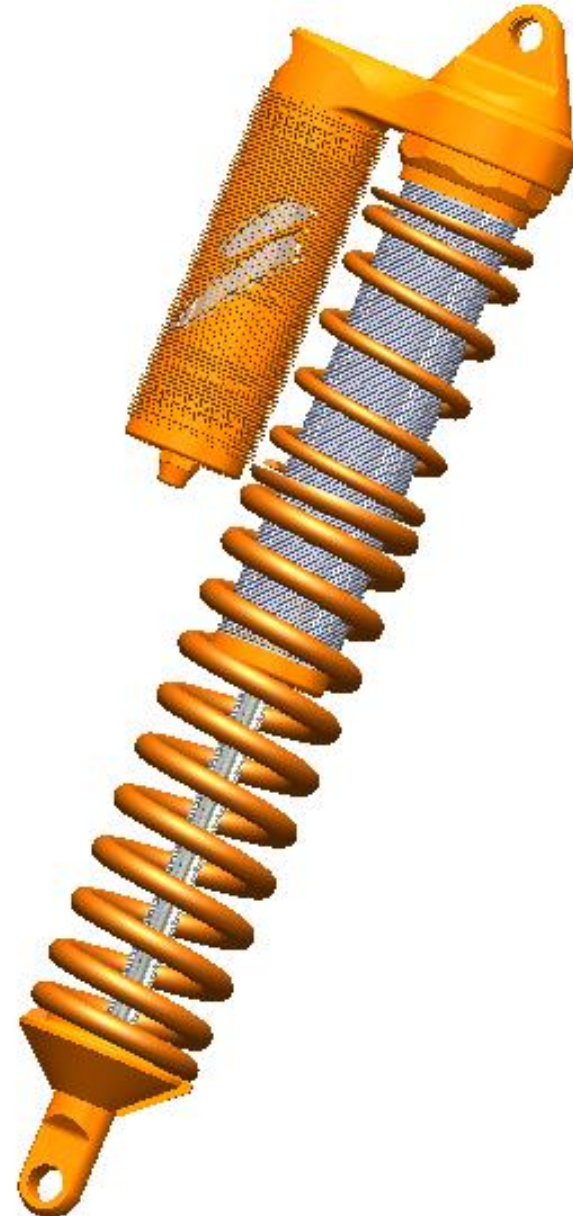
- Patented - Reversible Semi-Trailing arm
- Shock angle optimized for maximum rising rate



SUSPENSION

Shock Specs:

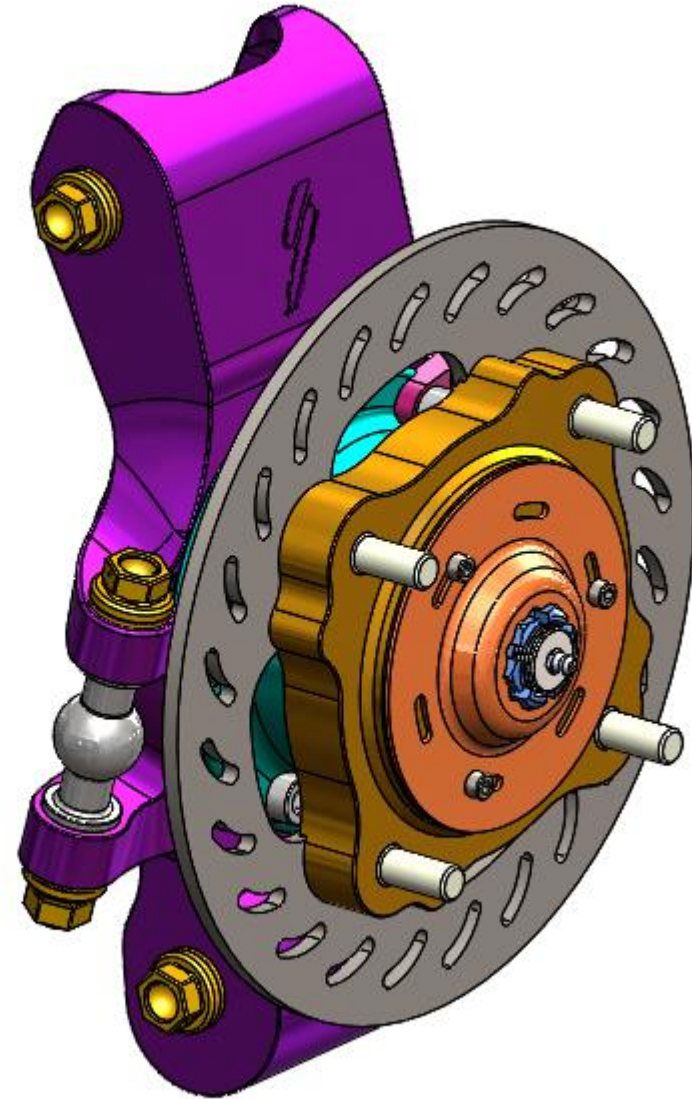
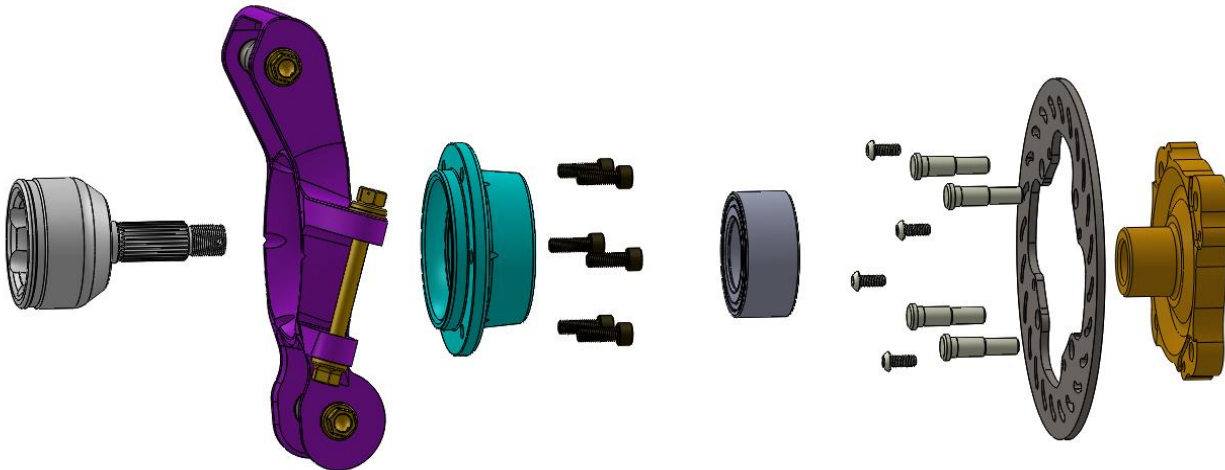
- 3.25" Internal Bypass
- 12" Stroke
- 360 degree clock-able piggyback reservoir
- External Independently adjustable rebound and compression
- Dual rate springs
- Finned reservoir



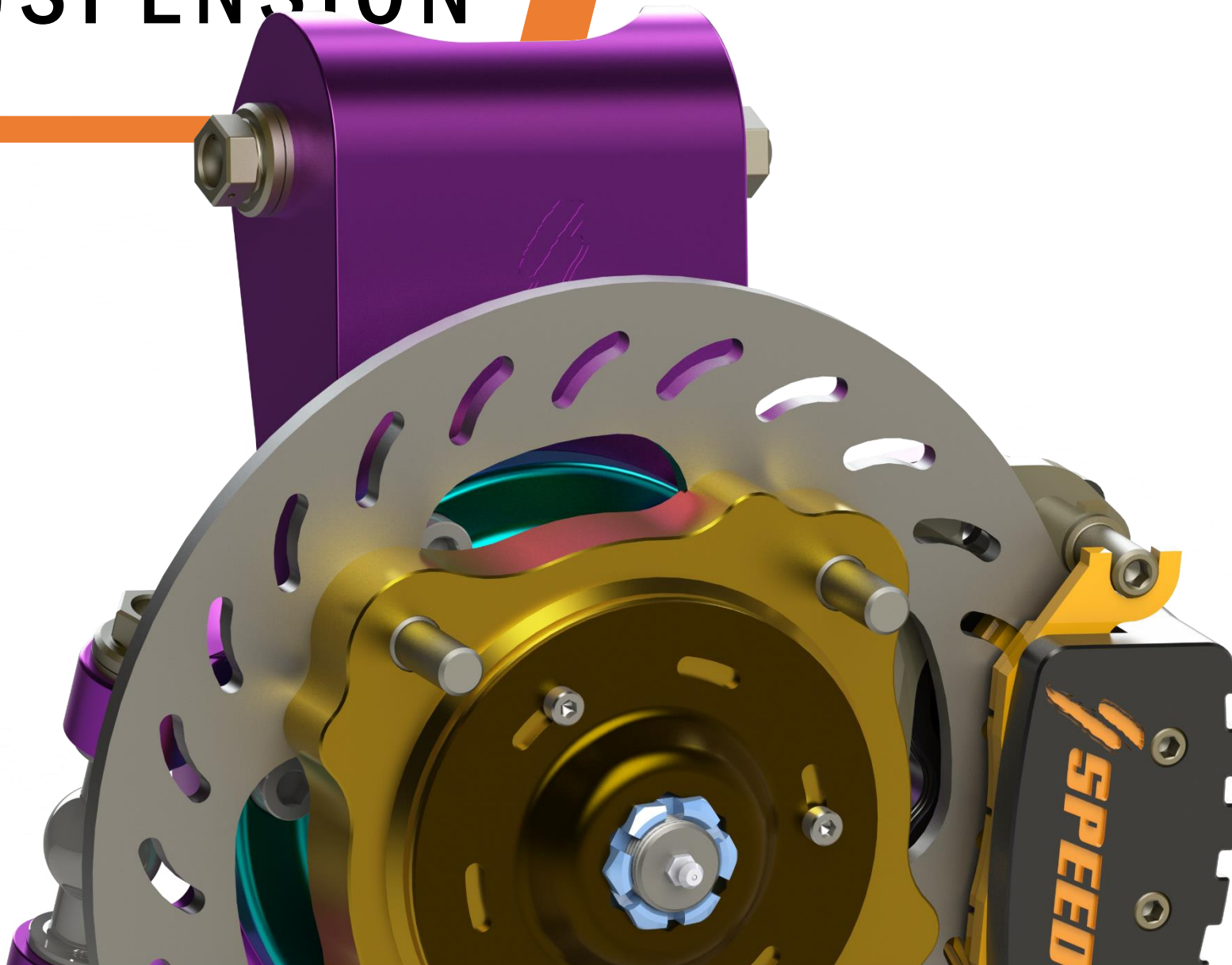
SUSPENSION

Upright/Hub Specs:

- Forged Aluminum Upright
- Universal Hub and bearing (all 4 corners)
- Fully shouldered bolts



SUSPENSION

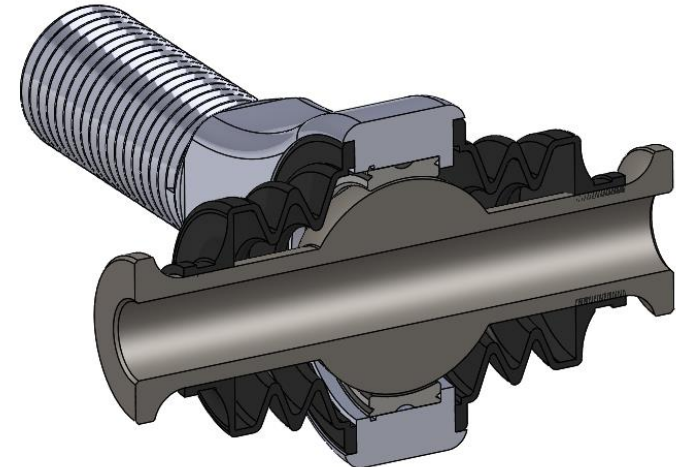
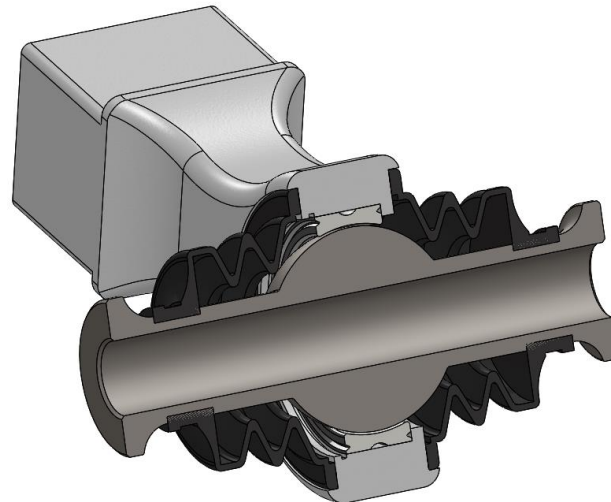
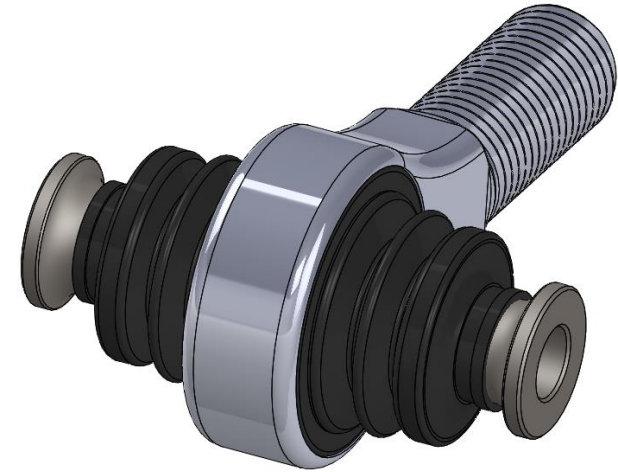
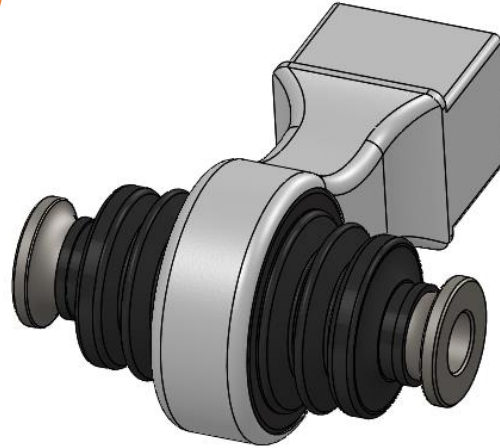


SPEED/UTV

SUSPENSION

Bearing Specs:

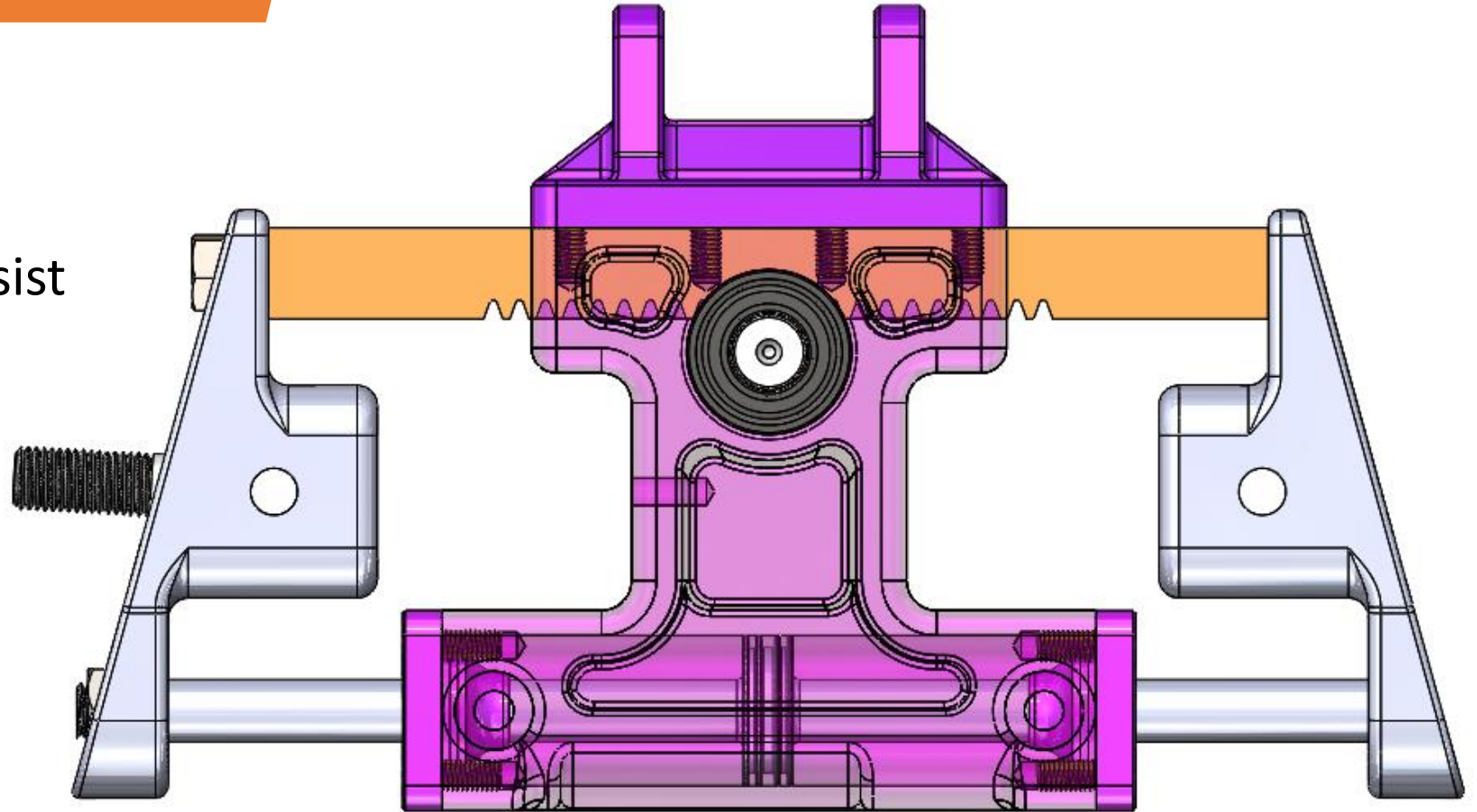
- Custom bearings with built in misalignment
- External rubber boot weather protection
- Replaceable, same bearings used multiple places on car.



STEERING

Steering specs:

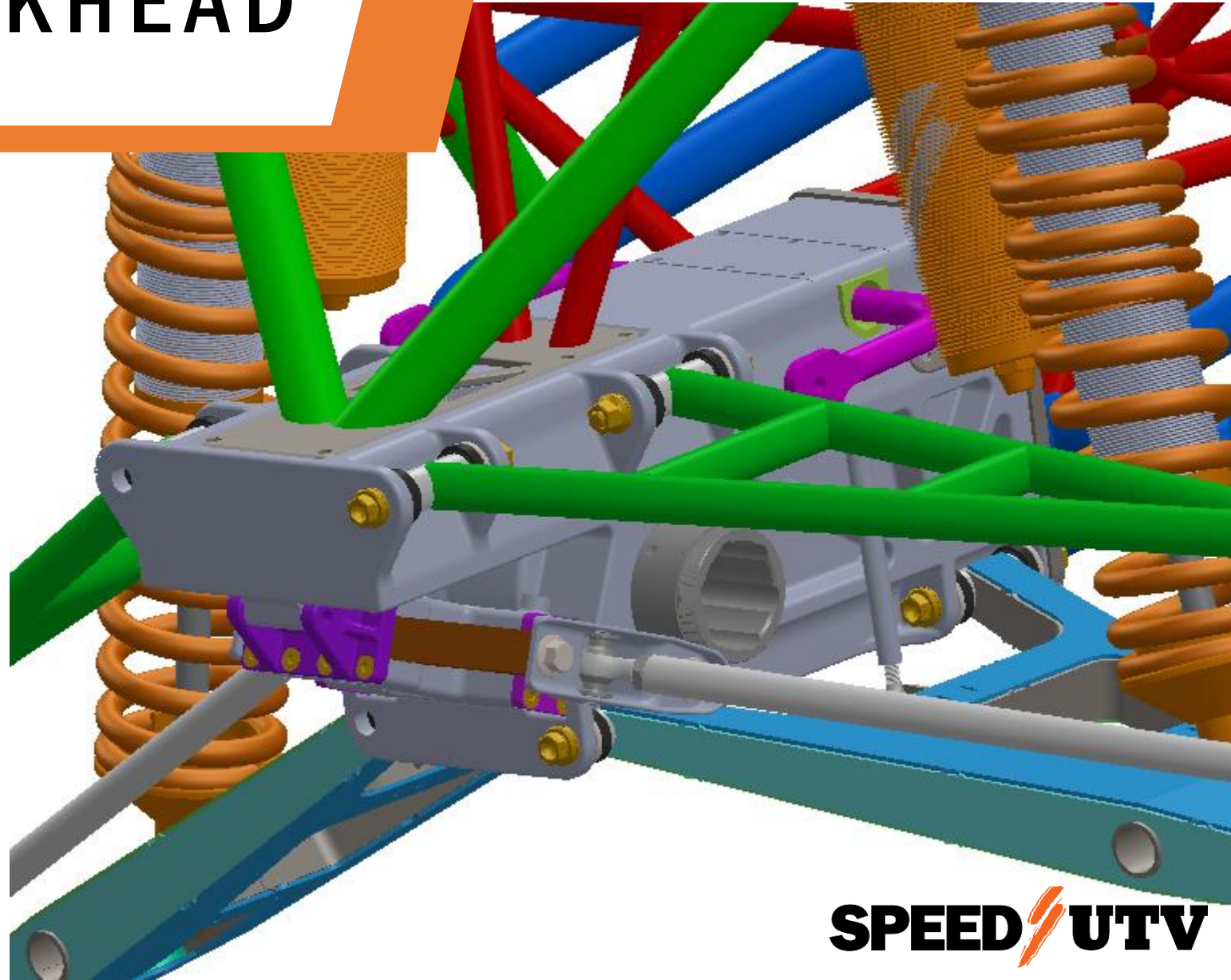
- Electro-Hydraulic assist power steering
- 1.75:1 Ratio
- Less than 0.5 deg. of Bump steer



PATENTED BULKHEAD

Integrated Bulkhead:

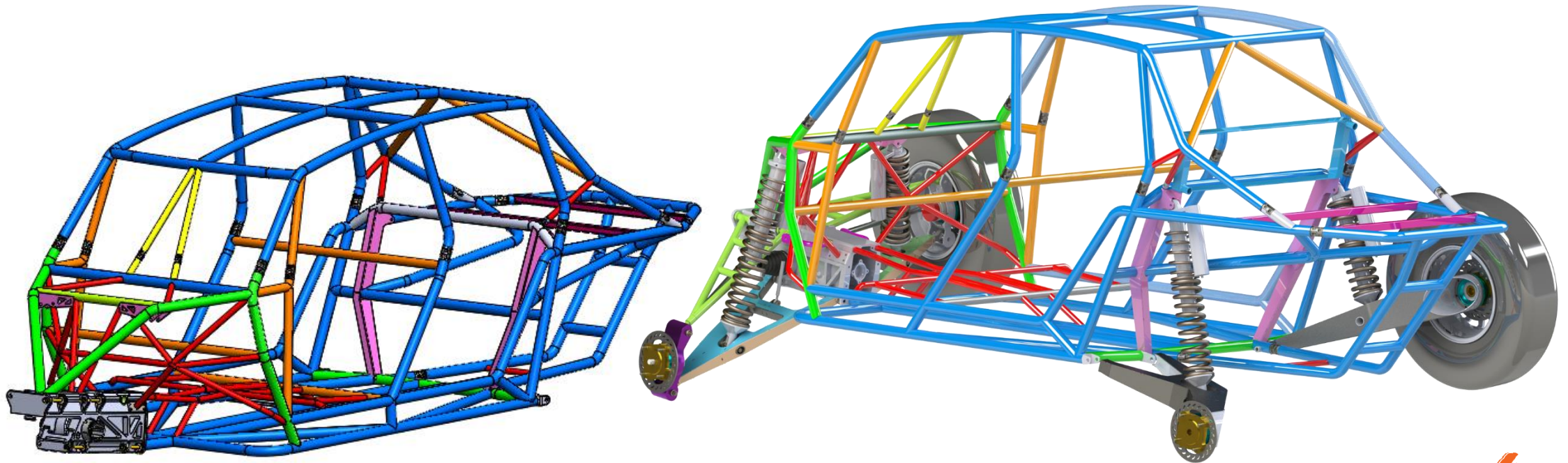
- Patented RG AWD Trophy Truck (Unicorn) inspired Bulkhead
- Mounts suspension, steering, and front differential all in one structure



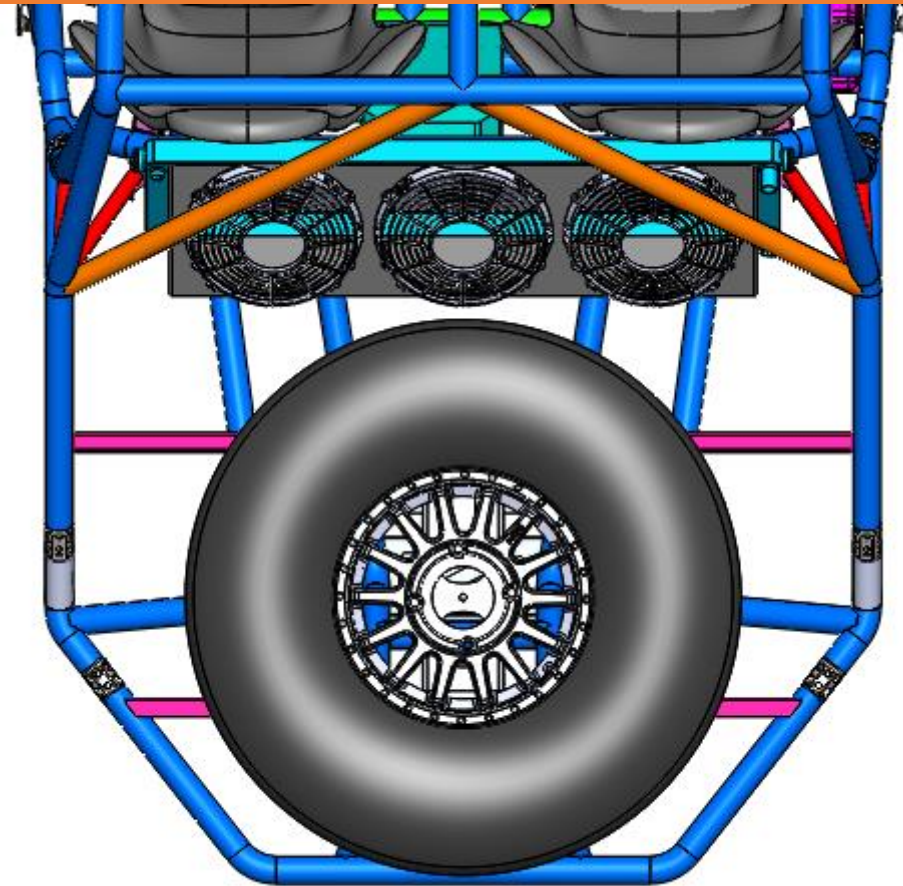
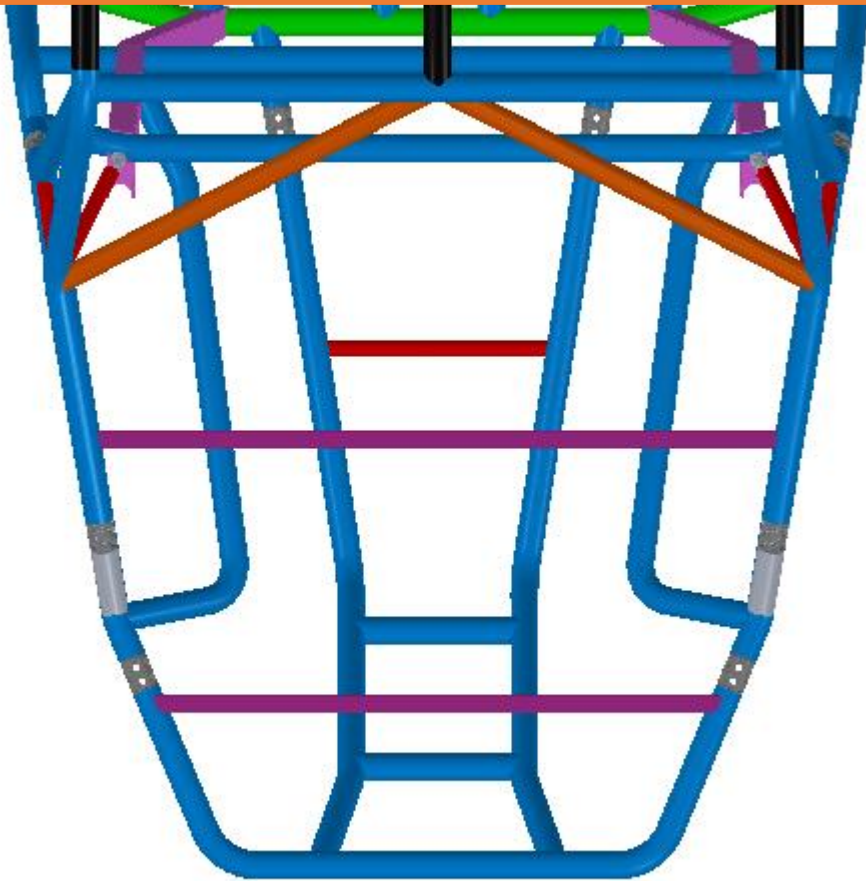
CHASSIS

Chassis Specs:

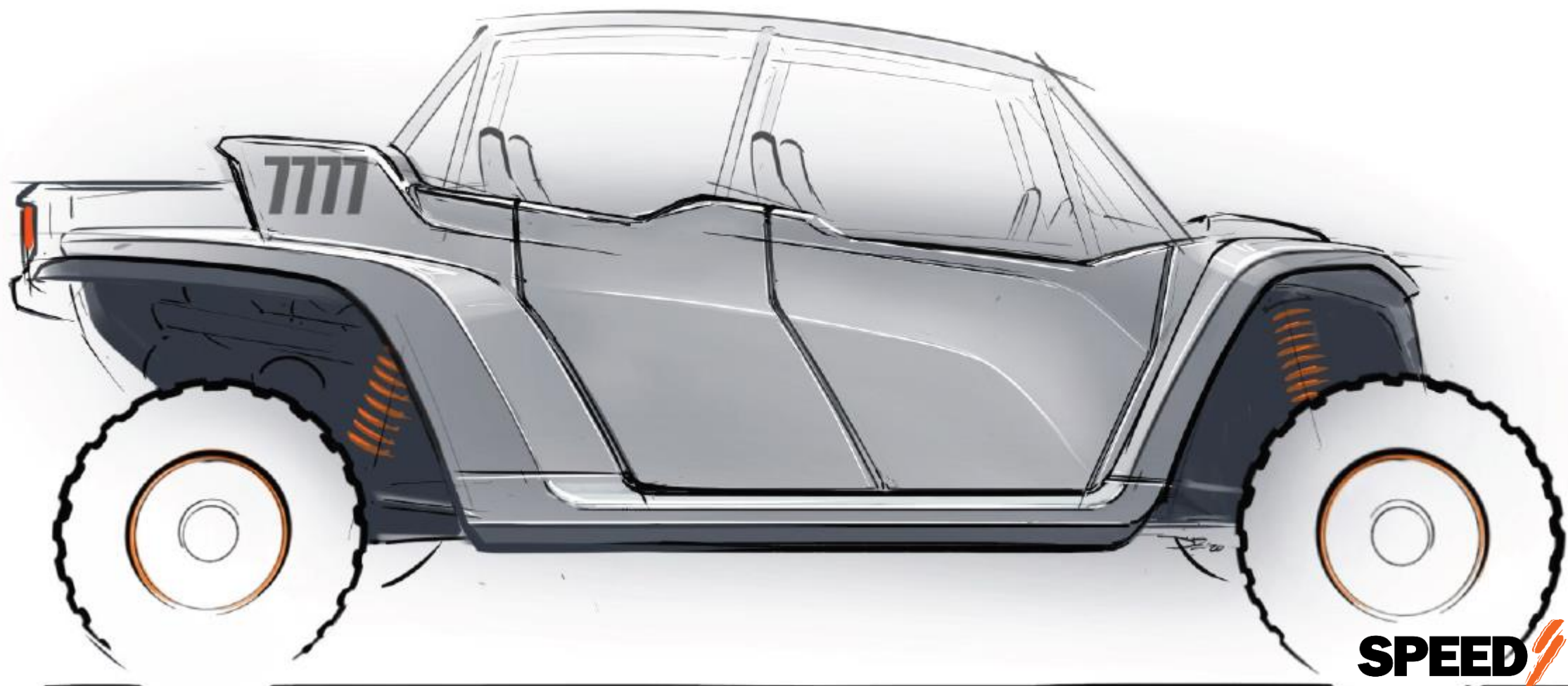
- Seamless tubing
- Added factory FIA style A-Pillar support (morgi-bar)
- Patented V-Bars front & Rear
- Patented Roof Spine



WIDER REAR BED PORTION OF FRAME



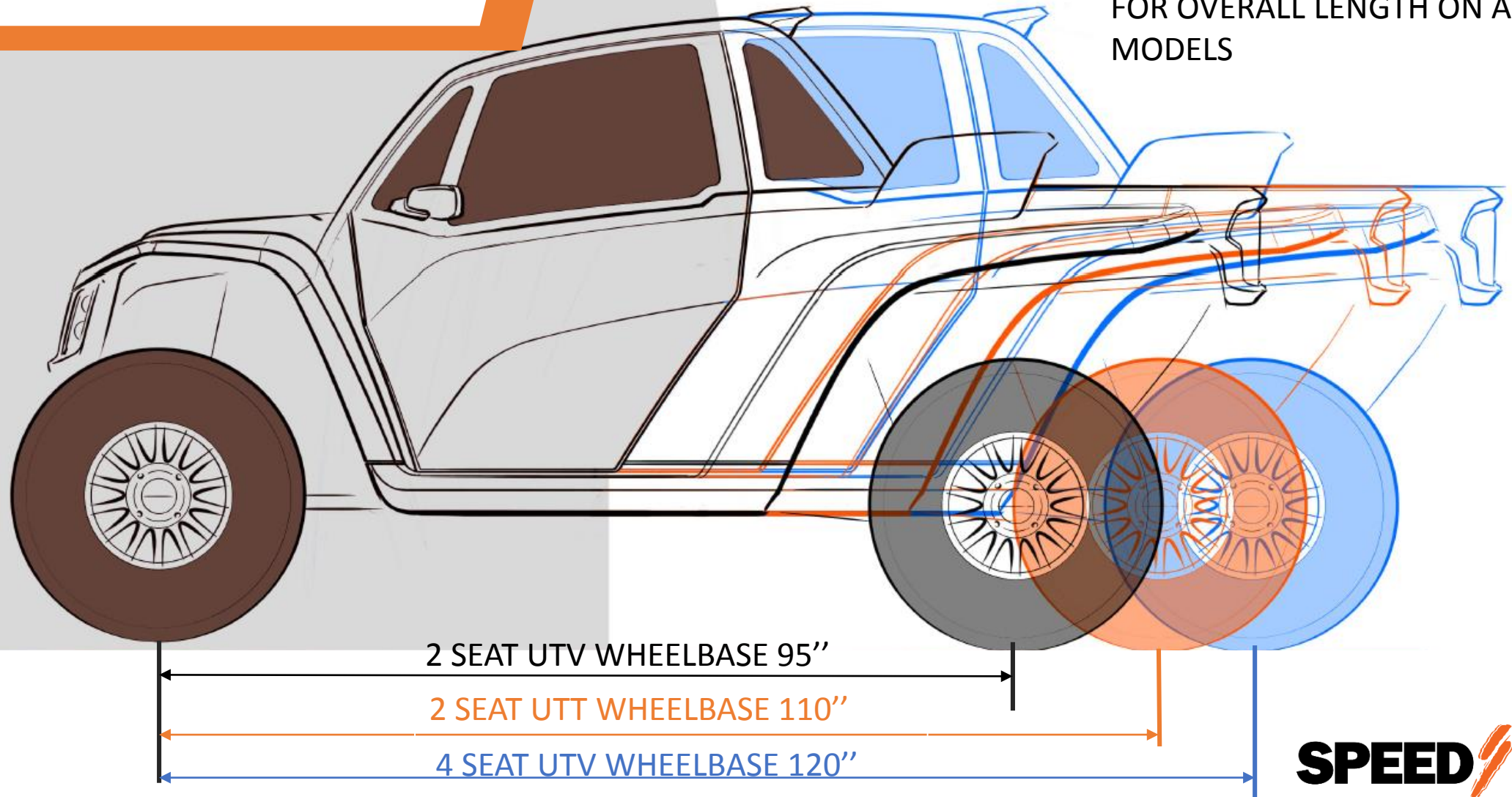
BODY



SPEED/UTV

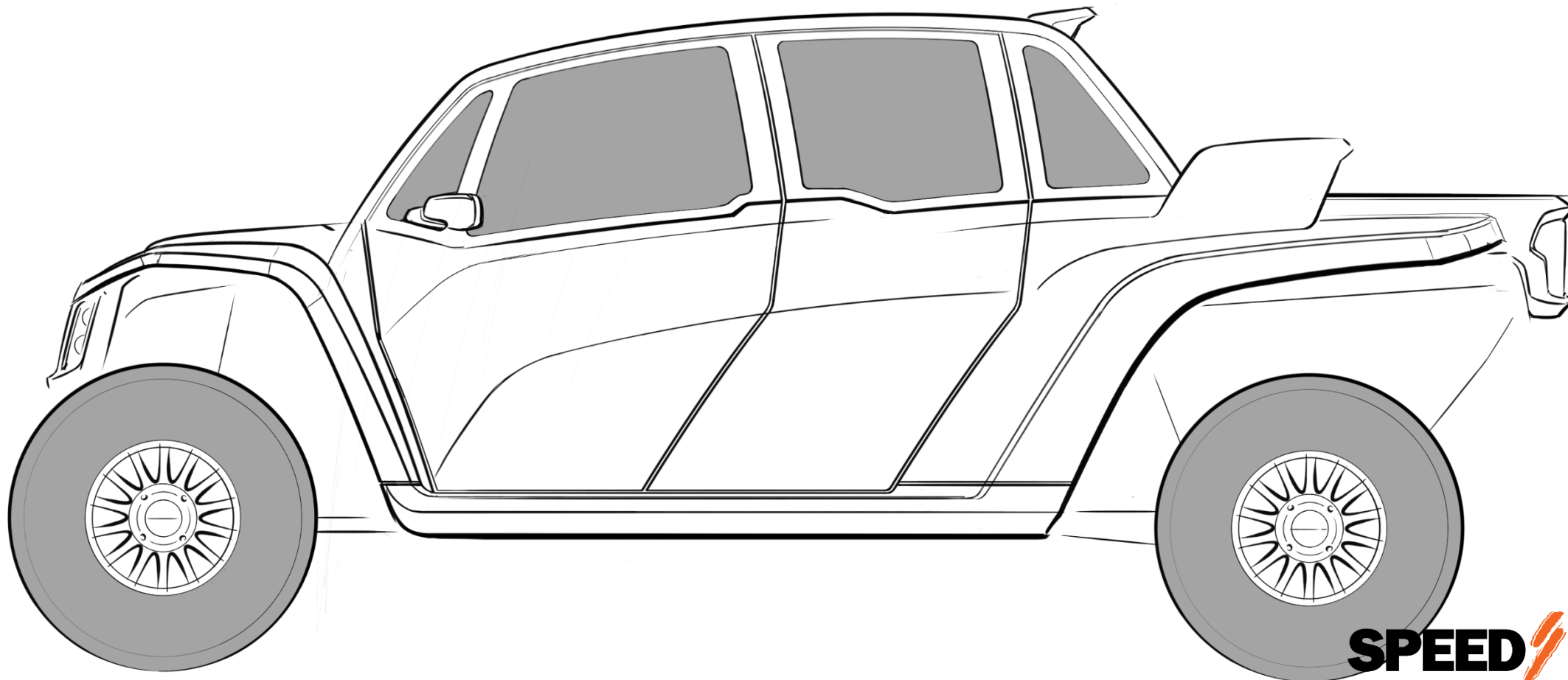
WHEELBASE

NOTE: ADD 41" TO WHEELBASE
FOR OVERALL LENGTH ON ALL
MODELS

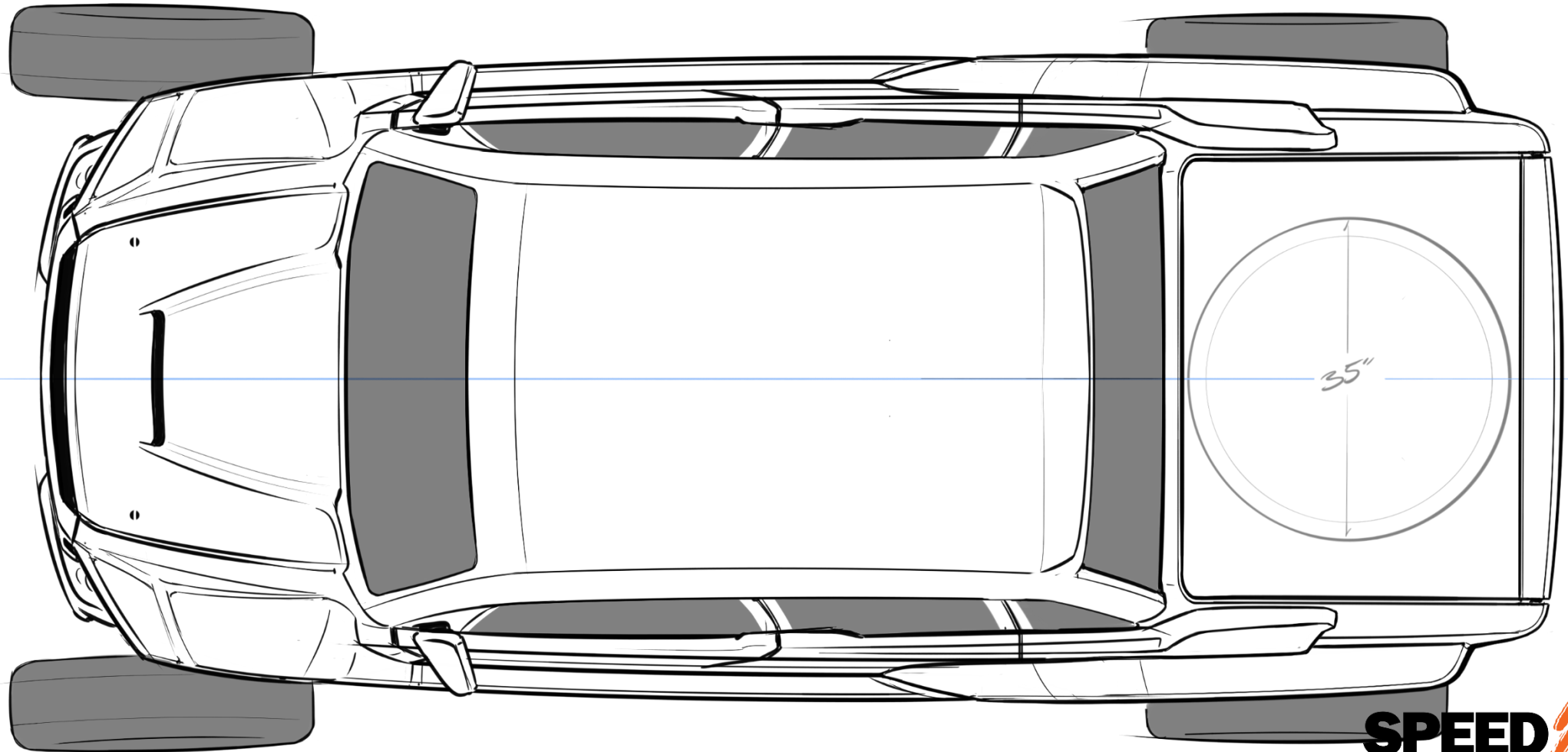


SPEED/UTV

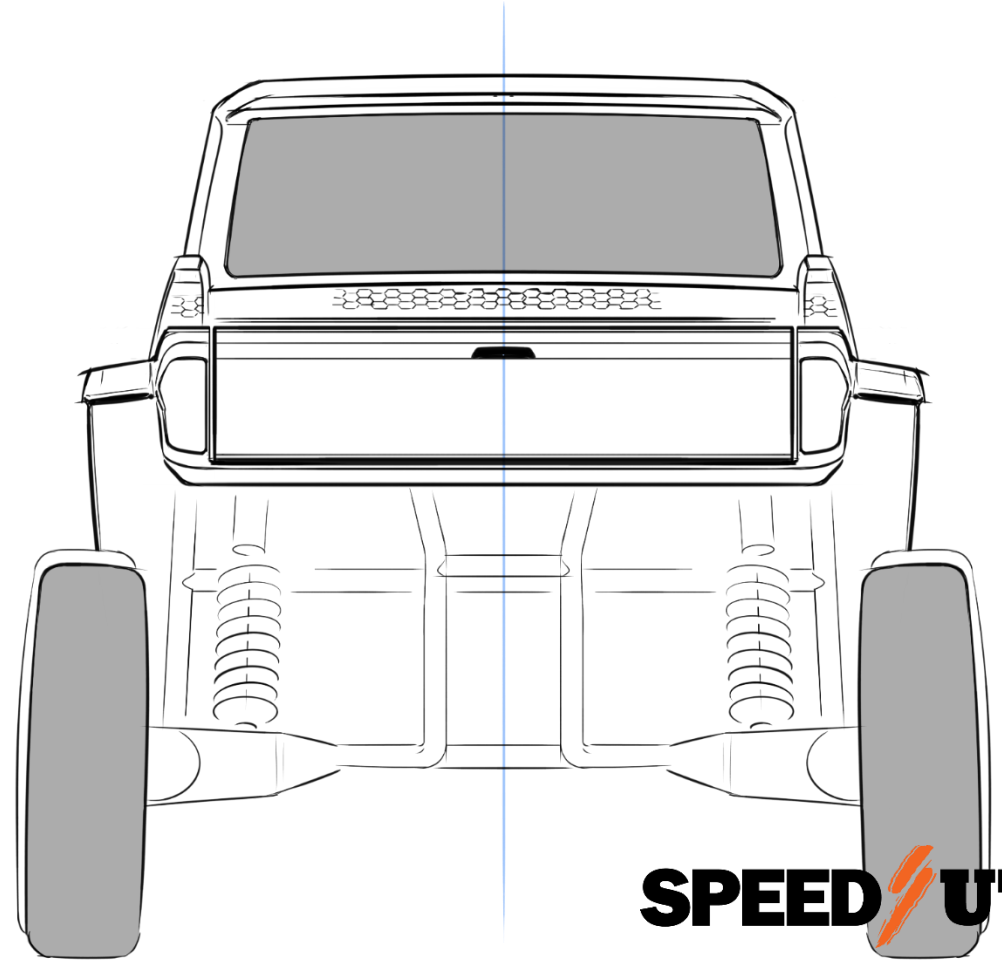
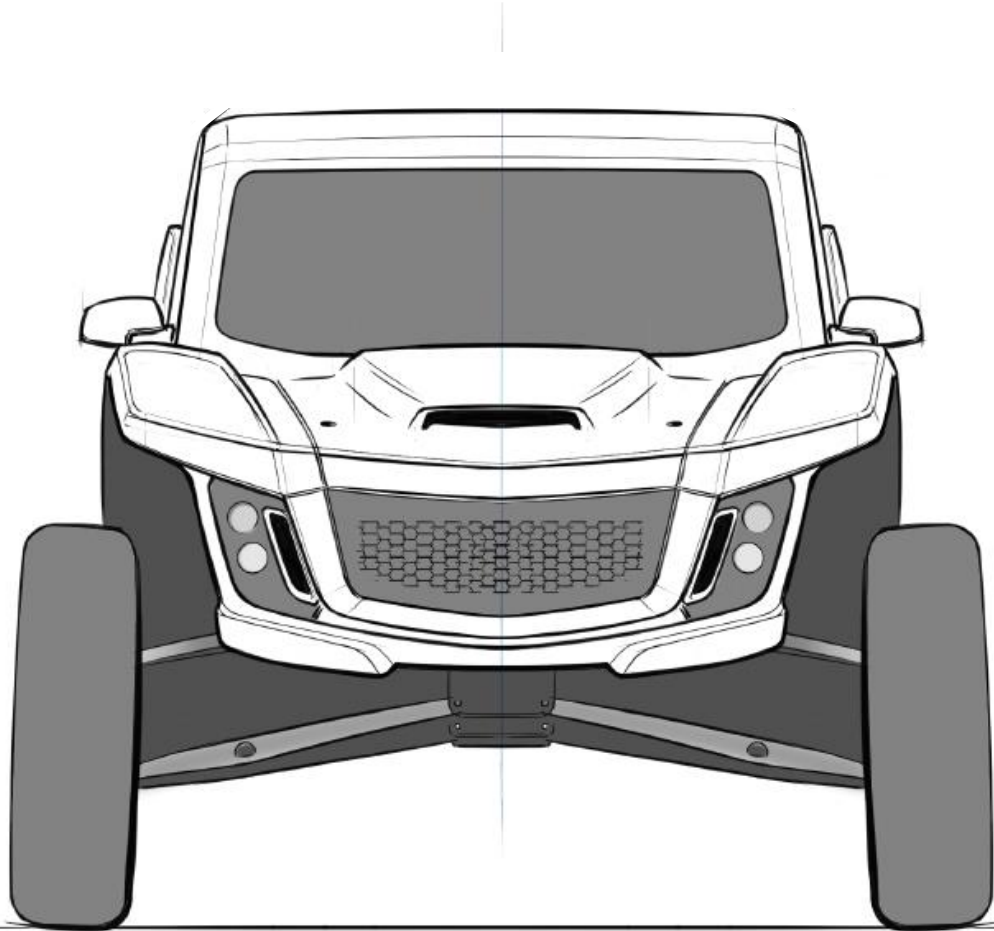
BODY



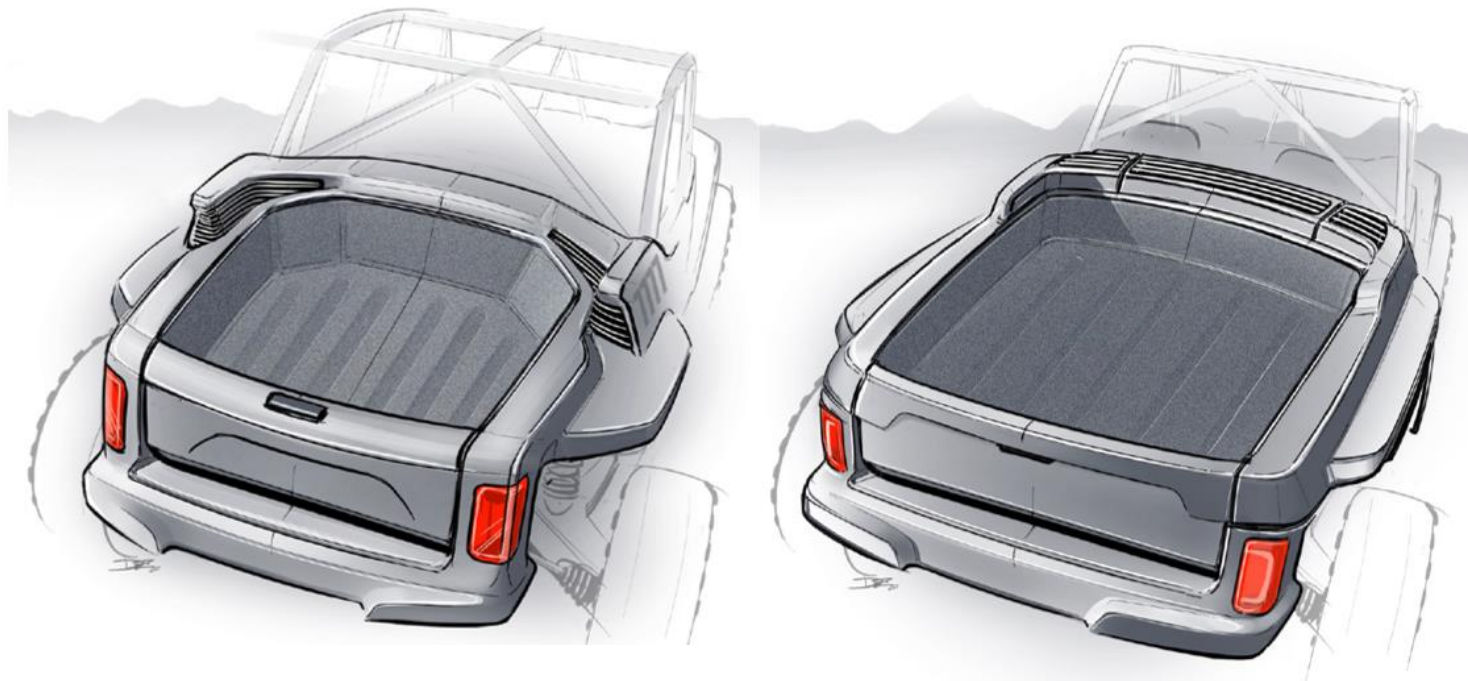
BODY



BODY



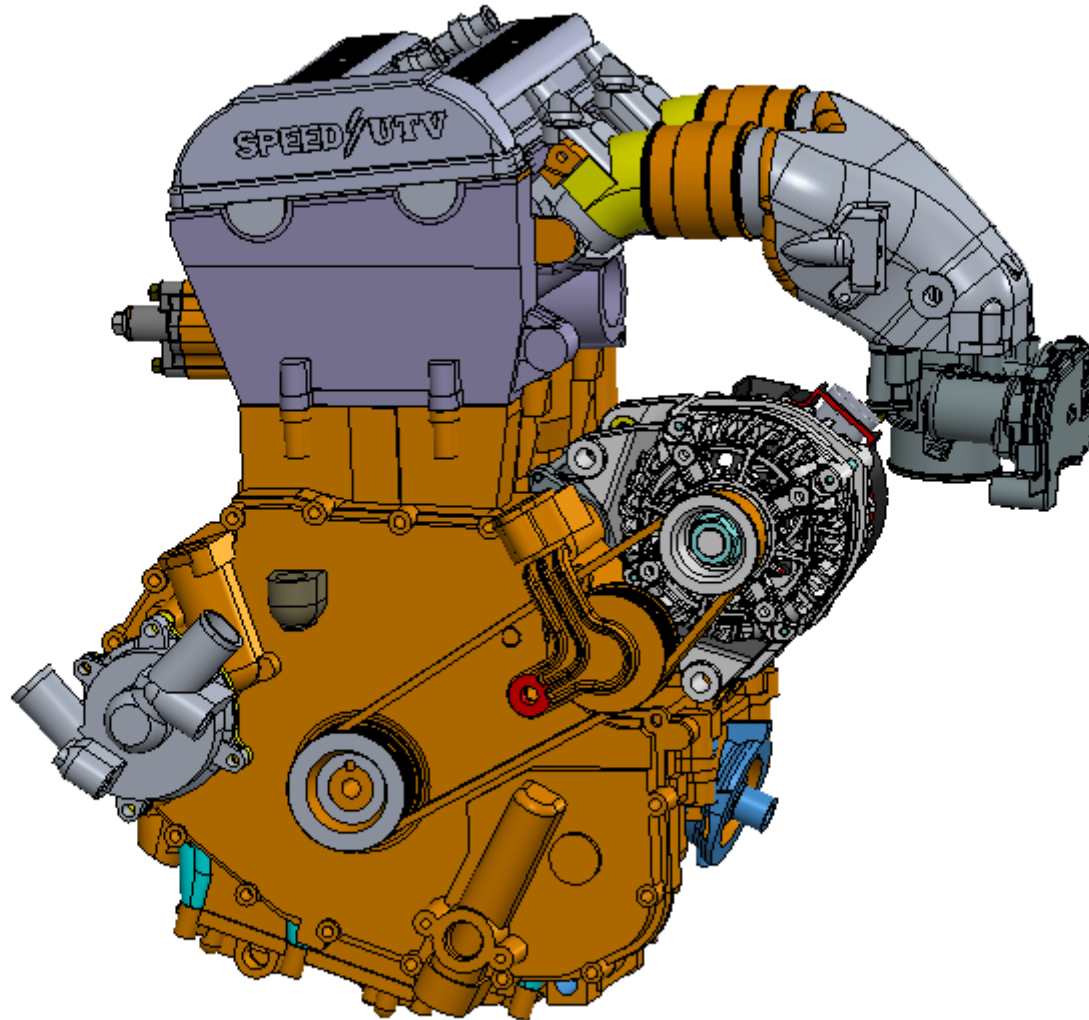
BED IS 48'' WIDE



SPEED/UTV

LAST TIME...

**Stay tuned to our
social media for
more...**



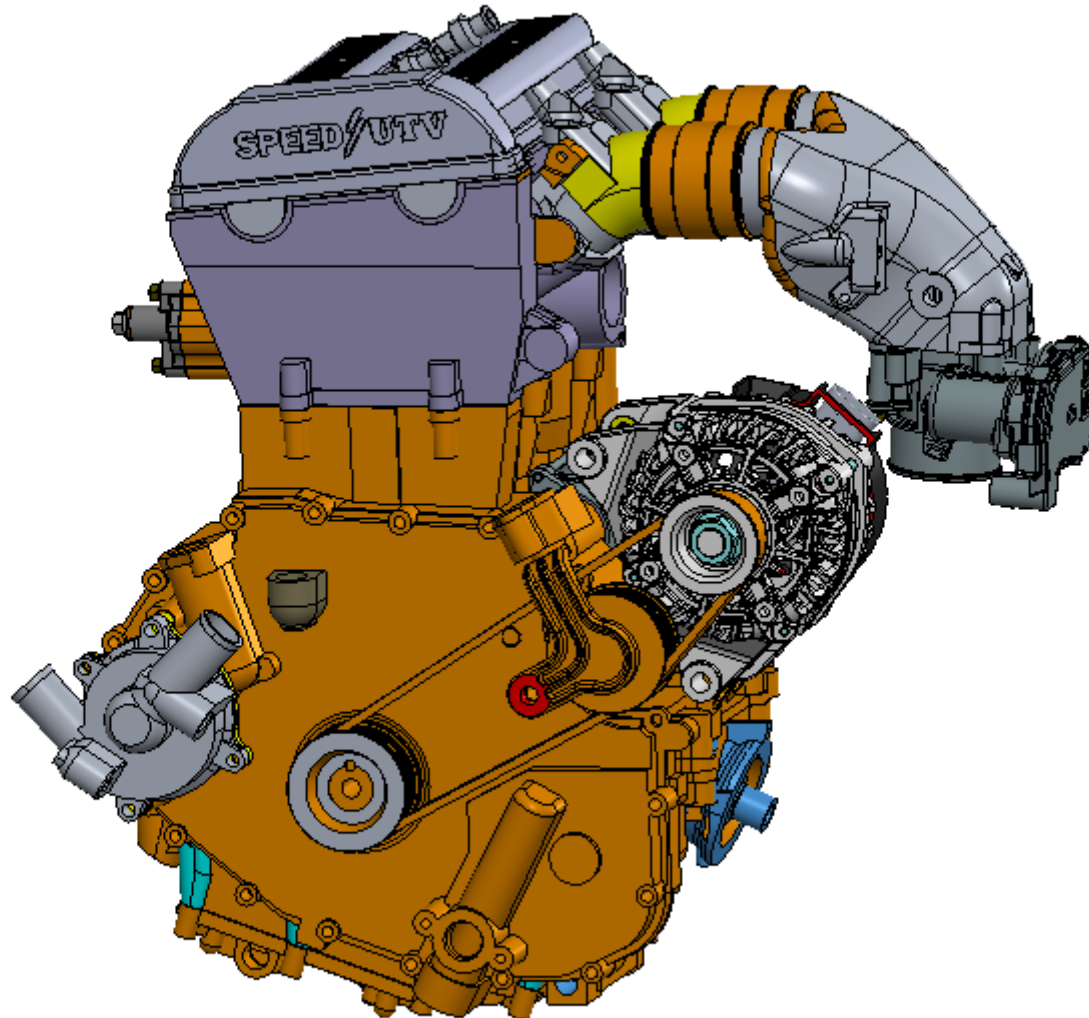
@SpeedUTV

SPEED/UTV

MOTOR

Motor Specs:

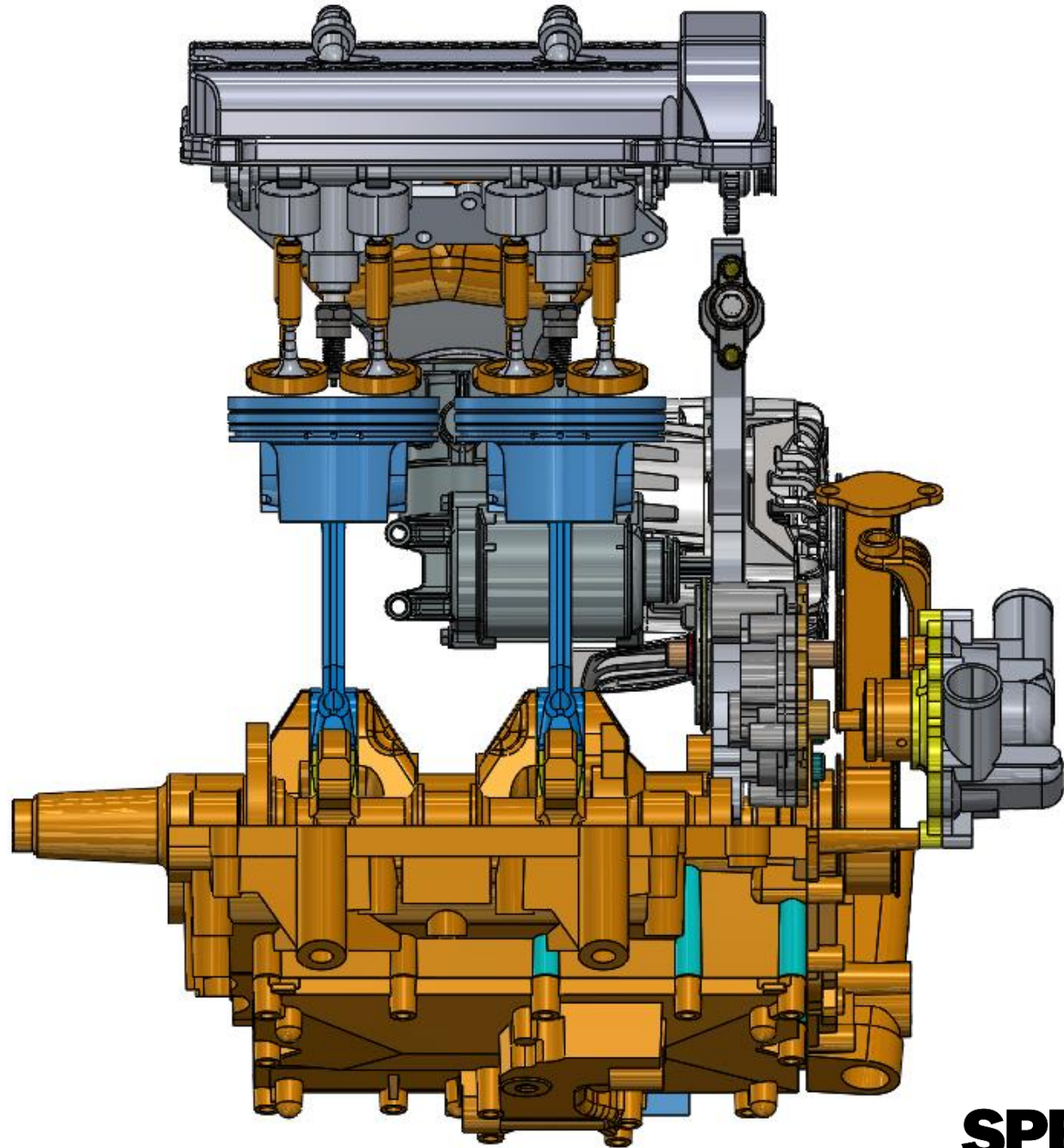
- 230Hp (300 Hp on E-85)
- 999CC
- Turbocharged
- 2 Injectors per cylinder
- 4-Valve DHOC



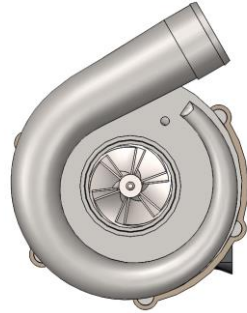
MOTOR

Motor Specs:

- Bore: 98mm
- Stroke: 66.25mm
- Number of cyl: 2
- 4 valves per cylinder
- Forged Pistons



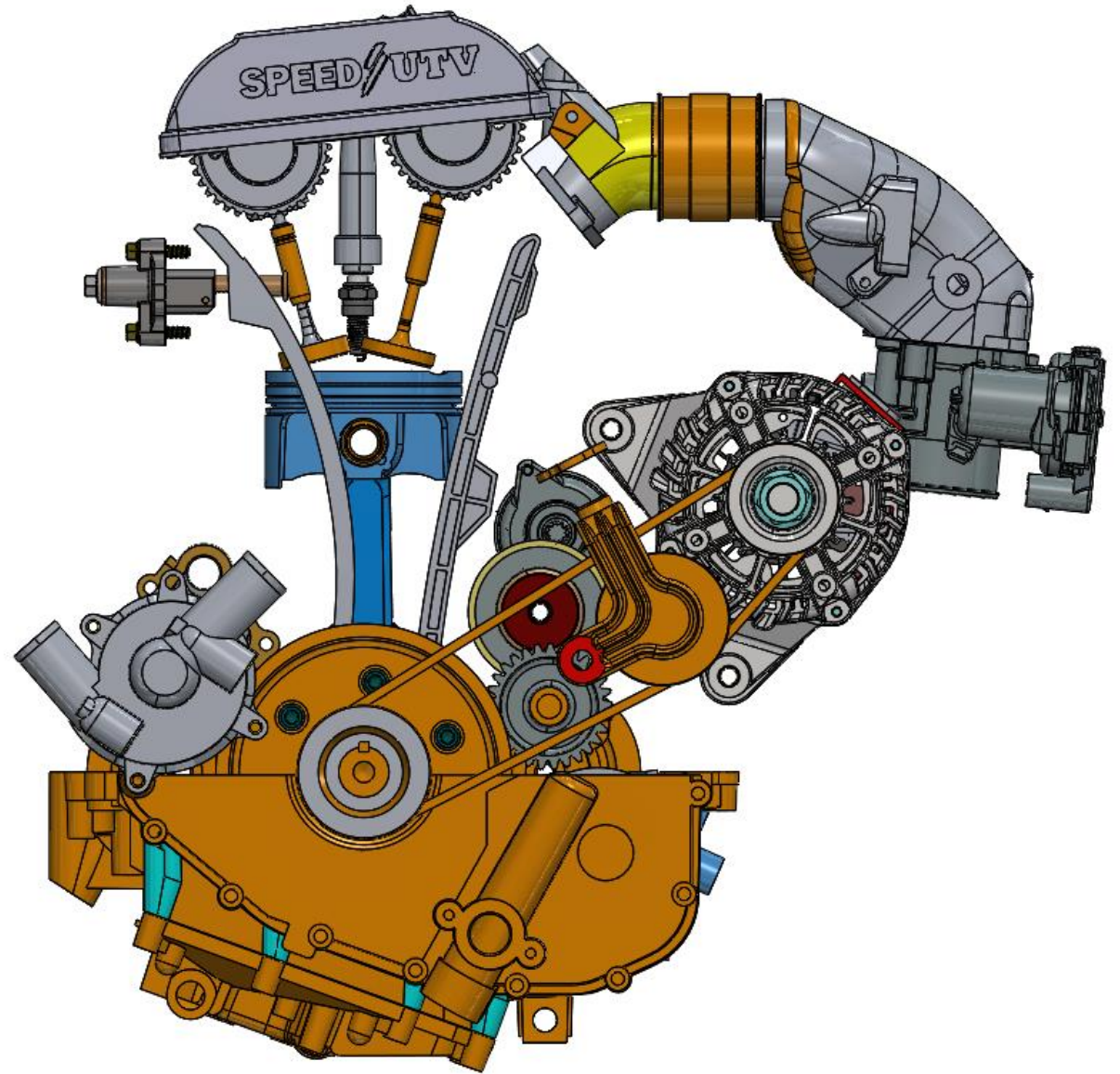
MOTOR



Power Options:

- **Stock:** 230HP ~20PSI of Boost on Pump fuel (91 Octane)
- **“Speed Key”:** 300HP unlocks Boost up to ~30PSI
 - Uses a flex –fuel sensor to detect E-85, adjusts boost accordingly.

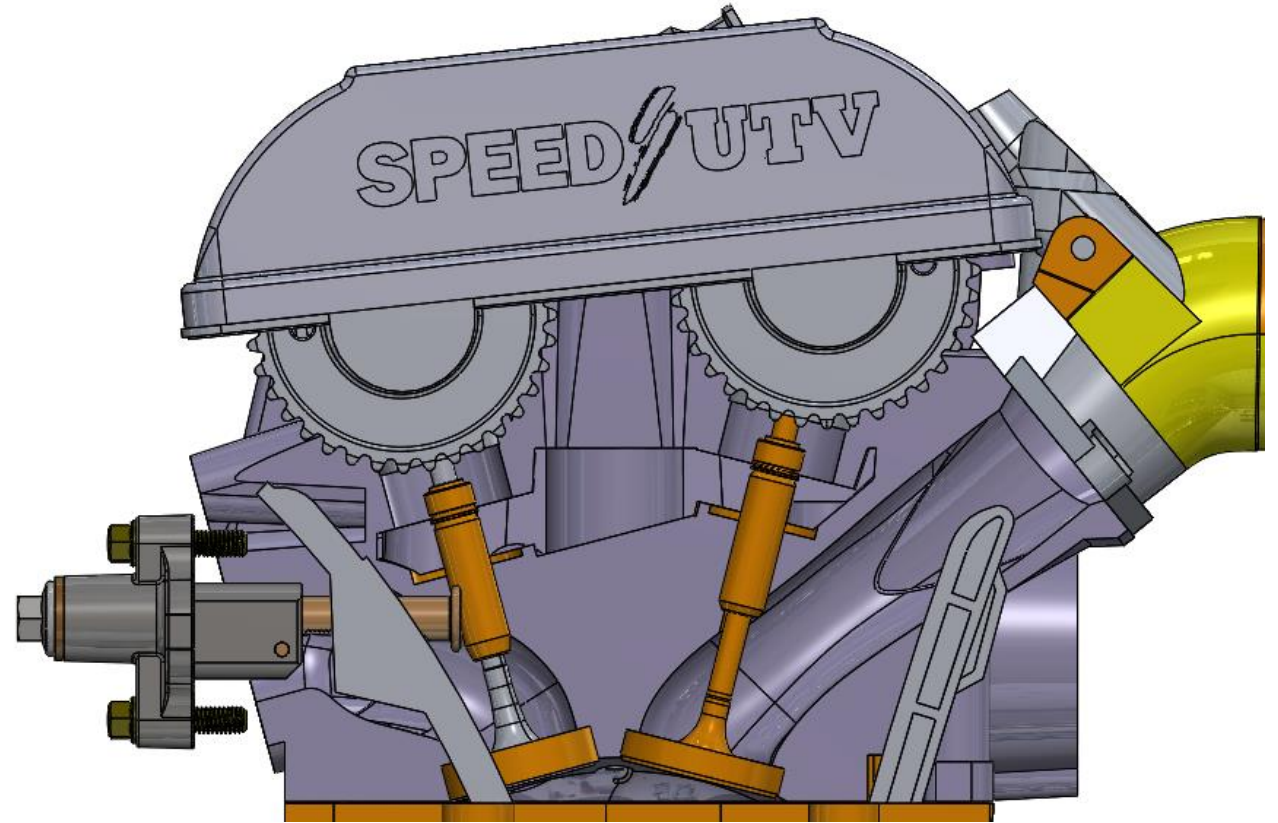
*Notes: All tunes will be CARB and EPA compliant.
“Speed Key”, requires liability release waiver and
termination of motor/powertrain warranty.*



MOTOR

Power Options:

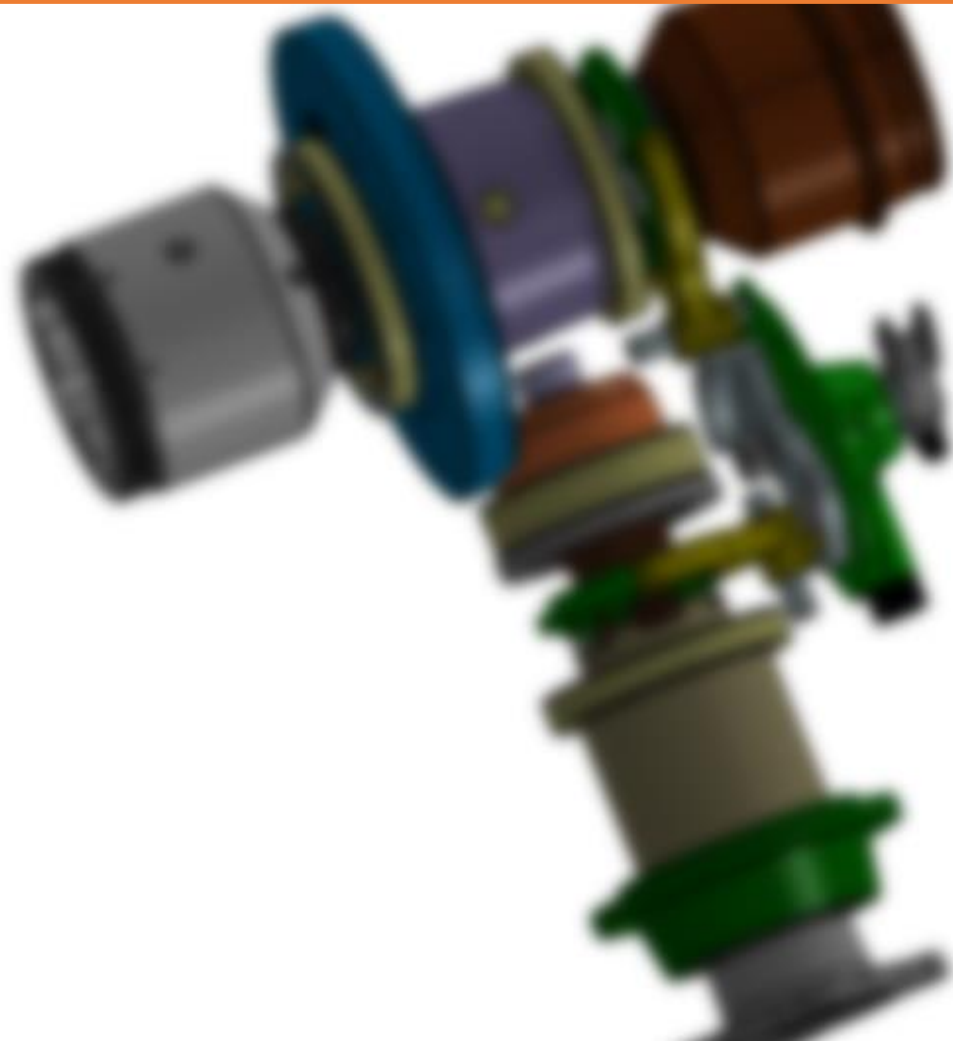
- Ports designed by Indy Car/NASCAR/Racing Motor Designer
- 12mm Spark plugs
- Dedicated cooling circuits for ports and sparkplug



SPEED UTV

Next time: Drivetrain

**Stay tuned to our
social media for
more...**



 **@SpeedUTV**

SPEED  UTV