



ROBBY GORDON – TODD ROMANO

DANIEL GRANGER – KYLE SWOBODA

SPEED  UTV

Design Presentation: 10

FOR PUBLIC RELEASE: 05/27/2020



4 SEAT DISCOUNT HAS CHANGED

SPEED UTV

EL JEFE LE

TODAY \$35,000



MSRP \$37,000

\$3,000.00

Add to cart

Discount Pricing on El Jefe LE and RG edition has changed. You can still place an order for Pre-Order pricing.
Order at www.SpeedUTV.com

EL JEFE RG

TODAY \$37,000



MSRP \$39,999

\$4,500.00

Add to cart



GENERAL

SUSPENSION

STEERING

CHASSIS

BODY

INTERIOR

DRIVETRAIN

2 SEAT DISCOUNT ENDS JULY 15th

SPEED  **UTV**

**BAJA BANDIT
LE**

TODAY \$30,000



MSRP \$33,000

\$1,500.00

Add to cart

**BAJA BANDIT
RG**

TODAY \$32,500



MSRP \$36,000

\$4,000.00

Add to cart

**EL DIABLO
LE**

TODAY \$30,000



MSRP \$33,000

\$1,500.00

Add to cart

**EL DIABLO
RG**

TODAY \$32,500



MSRP \$36,000

\$4,000.00

Add to cart

Discount Pricing on Bandit & Diablo LE and RG edition ends JULY 15th. Get your orders in before midnight eastern time if you want to take advantage of Early Pre-Order pricing.
Order at www.SpeedUTV.com



GENERAL

SUSPENSION

STEERING

CHASSIS

BODY

INTERIOR

DRIVETRAIN

**Most Capable
Base model on
the market**

- Four seat El Jefe available now
- 2 Seat models coming July 15

Don't Get Even. Get Ahead.

Base Model PRE- ORDER \$1500

Head to head, side by side, the highest performance base model UTV/SXS/UTT in the Powersports market

Limited Edition pre-orders feature: *Simulated Beadlocks factory wheels, factory seats, factory graphics*

EL JEFE
BASE



MSRP \$32,000

EL DIABLO
BASE

**COMING
JULY 15**

MSRP \$30,000

BAJA BANDIT
BASE

**COMING
JULY 15**

MSRP \$30,000

Add to cart

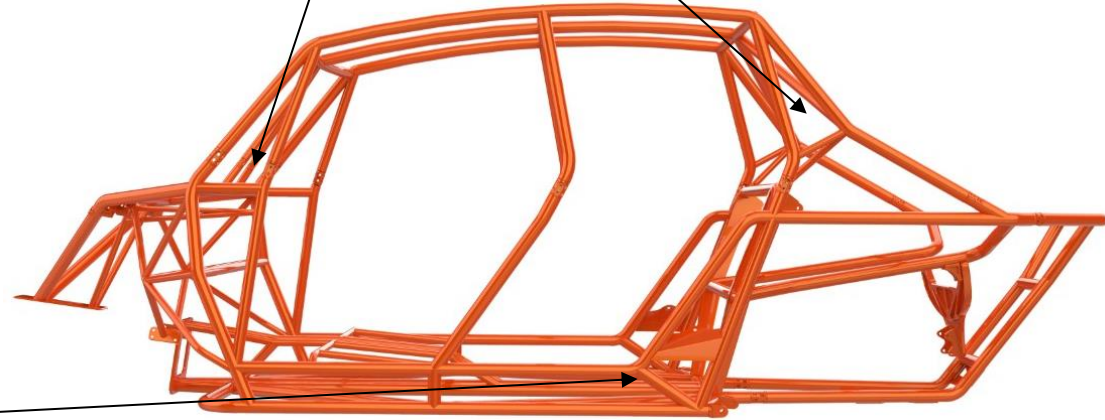
Full Length
Spine

Triangulated
Spine Structure

Sheet metal shock
towers

Integrated
Shock
mounts

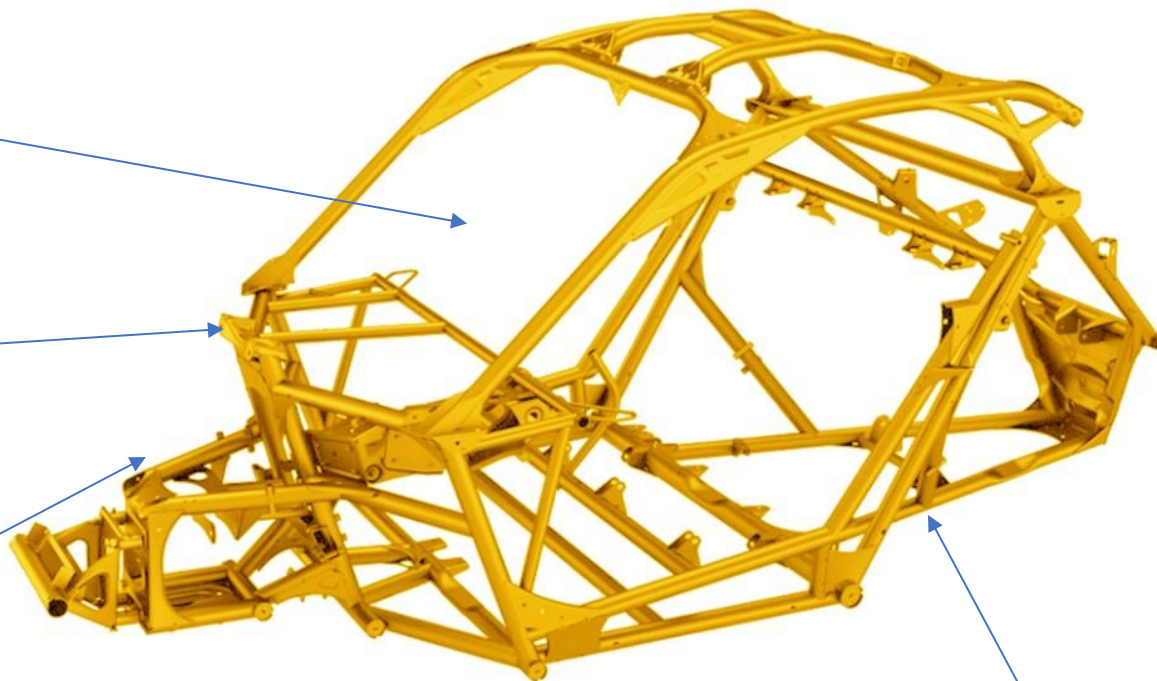
Supported Bends



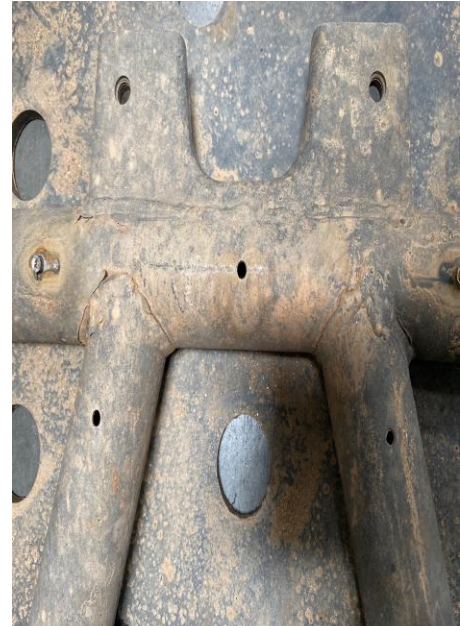
**No Diagonal Bracing
in Rollcage (accessory
rack)**

**Single Shear shock
mounts**

**Front of chassis
unsupported (S3 or
Geiser to buy
structural upgrade)**



Dead Tubes







Shocks mount
in center of
unsupported
tube

Unsupported
Bends

WTF is
this???

More on Polaris
next week....

Dead Tubes

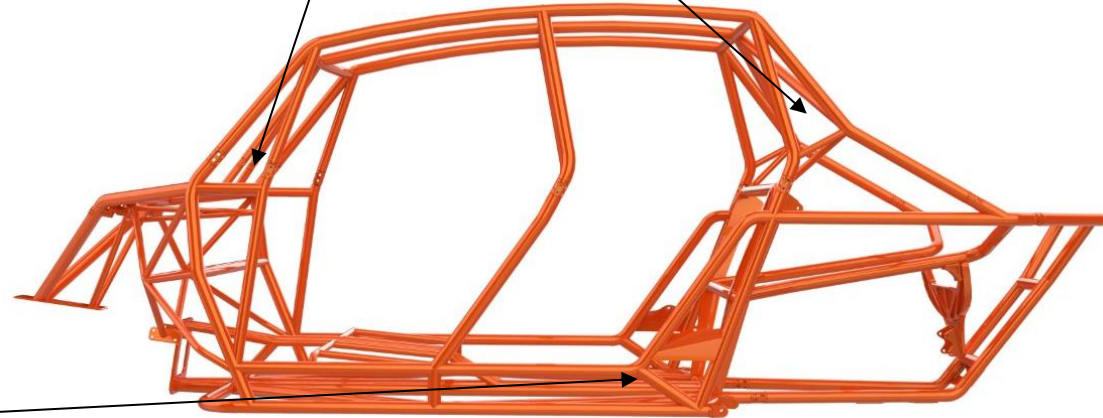
Full Length
Spine

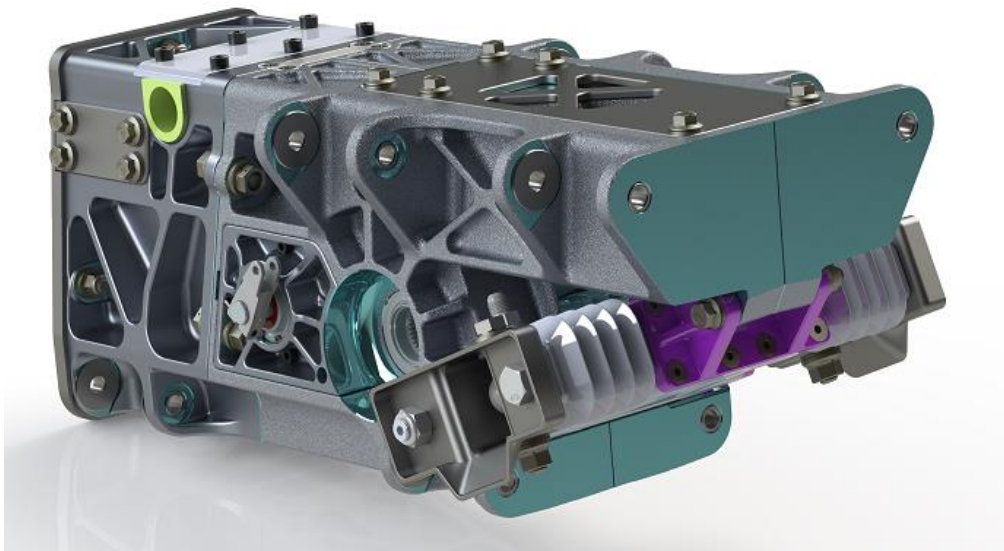
Triangulated
Spine Structure

Sheet metal shock
towers

Integrated
Shock
mounts

Supported Bends





The Bulkhead is a structural member that integrates the front differential, steering rack and suspension arms into the chassis



Brock Greer

...

★ Rising Star · May 28 at 6:55 AM

So if I'm not mistaken the two piece wheels rely on the 3/8 bolts that hold the beadlock ring to absorb all impacts?



Nate Pearson and 4 others

29 Comments



Like



Comment



[View 4 more comments](#)



Sean Lindberg If it works on his TT I'm thinking it won't be a problem on a sxs

Like · Reply · 6d



[John Tommila replied](#) · 2 Replies



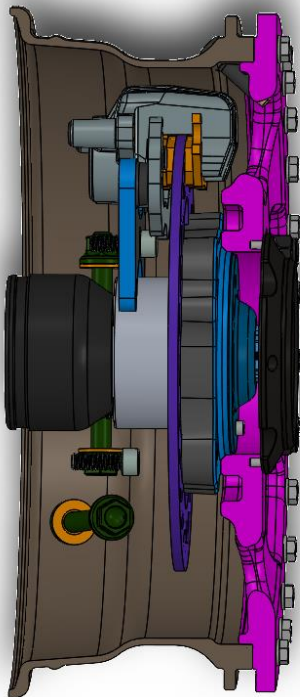
Todd Lambert Is this what your laying in bed at night wondering if the wheel has been reengineered?

Like · Reply · 6d



[John Tommila replied](#) · 10 Replies

The wheels utilize a shouldered face that distributes the load from the barrel up into the hub meaning the fasteners are not loaded in shear.



The Beadlock ring is also the face of the wheel



Brock Randolph

May 28 at 3:26 PM



I notice some of the drawings have the half doors like Polaris and canam but all the pictures I have seen seem to have solid doors does anybody know which it will have

We will be shipping cars with full doors on all models. Anything less would not be up to our safety standards.



The radiator will be rear mounted in the open cab cars and front mounted on enclosed cabs.



Our suspension is a direct evolution of what survived the DAKAR Rally and 1000s of miles in BAJA on our race cars. We are very confident in its strength, durability and performance.

QUESTIONS?

SPEED  **UTV**

QUESTIONS??
704-949-1255

Live call for

15 Minutes



GENERAL

SUSPENSION

STEERING

CHASSIS

BODY

INTERIOR

DRIVETRAIN



- Order now at:
WWW.SpeedUTV.COM



- Order now at:
WWW.SpeedUTV.COM