



ROBBY GORDON – TODD ROMANO

DANIEL GRANGER – KYLE SWOBODA

SPEED  UTV

Design Presentation: 10

FOR PUBLIC RELEASE: 05/27/2020



QUESTIONS??

704-949-1255

Call the Shop



4 SEAT DISCOUNT ENDS JUNE 1ST

SPEED  **UTV**

**EL JEFE
LE**

TODAY \$32,000



MSRP \$37,000

\$1,500.00

Add to cart

Discount Pricing on El Jefe LE and RG edition ends JUNE 1st. Get your orders in before midnight eastern time if you want to take advantage of Early Pre-Order pricing.

Order at www.SpeedUTV.com

**EL JEFE
RG**

TODAY \$35,000



MSRP \$39,999

\$4,500.00

Add to cart



GENERAL

SUSPENSION

STEERING

CHASSIS

BODY

INTERIOR

DRIVETRAIN



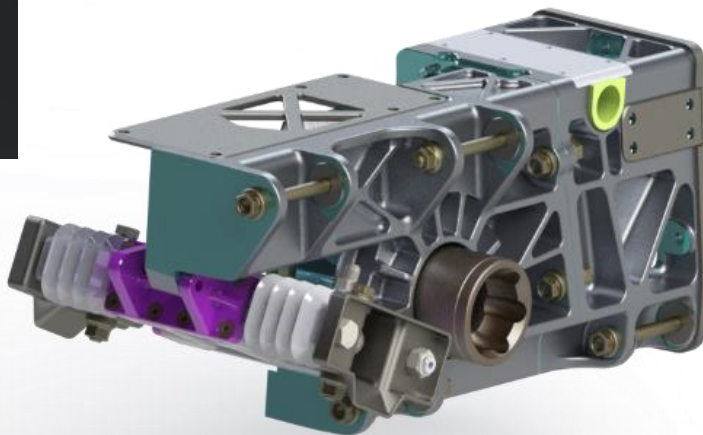
Johnny Barber

12 mins · 🌐

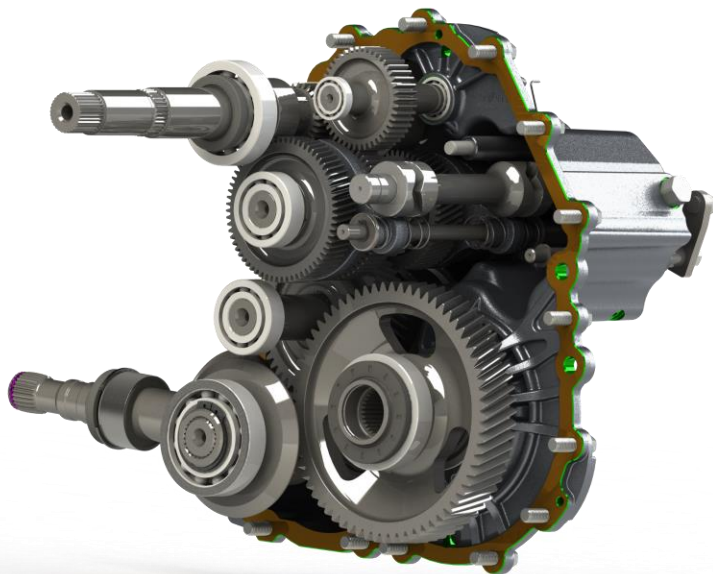
Todd Romano and/or Robby Gordon

I just watched all the presentation video's for I believe the third time now, and there are a few things that I have not heard mentioned yet..

1.. I know the differentials have Lockers, but when the lockers aren't engaged, are the differentials open, or Limited Slip/Posi ?



1. When Locker is not engaged front diff is open, rear is a full-time spool



2.. How much abuse will the Torque Limiting Clutch take before it has to be rebuilt ?. If you throw a set of slicks on it and takes it to the drag strip, will the increased traction wear the Torque Limiting Clutch prematurely ?

2. Torque Clutch has been designed to limit torque spikes and protect the rest of the driveline (axles, cvs, ring and pinion). It is set to be reliable at the 300hp level. It is a servicable part which will require a rebuild after extreme use.

Questions:

SPEED UTV

5.. With the suspension geometry, and the shock technology that is going into this side by side, how do you think the ride will compare to your Trophy Truck ?

I know that is a lot of questions, but I promise I won't ask anymore..

5. The Unicorn is impossible to beat for all out desert performance, but looking at a smiles per dollar ratio, the Speed UTV will win hands down.



GENERAL

SUSPENSION

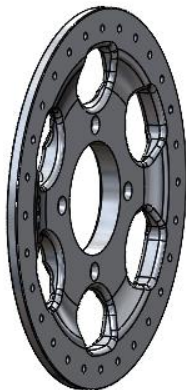
STEERING

CHASSIS

BODY

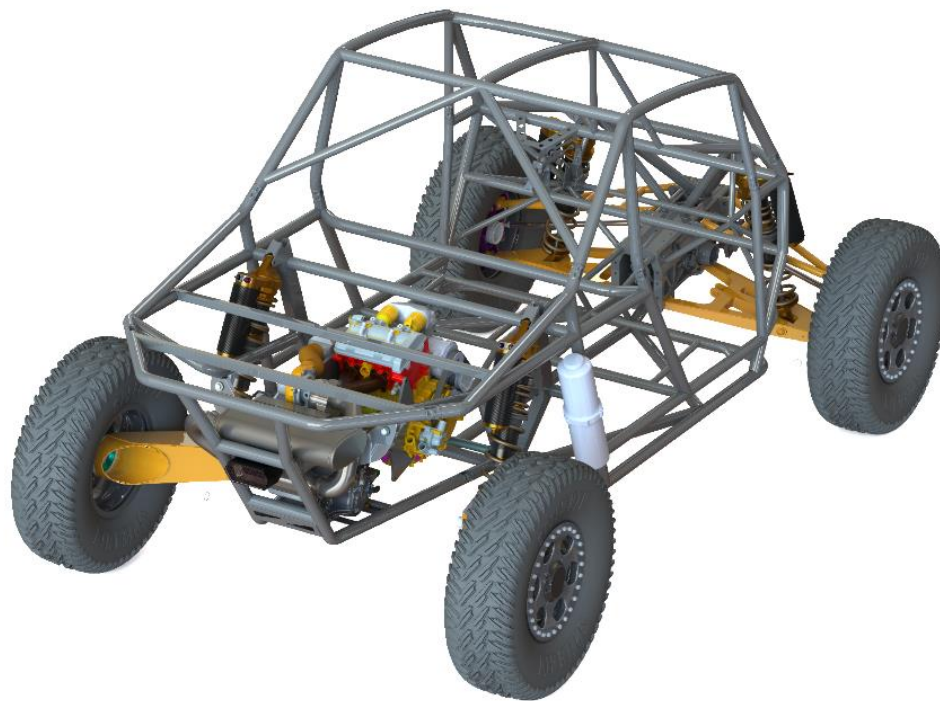
INTERIOR

DRIVETRAIN



The Beadlock ring is also
the face of the wheel

Are the frames dipped or powdercoated?





Are the frames dipped or powdercoated?

Both, the frames are first dipped in a process called E-Coating then they are Powdercoated





**Maximum flow and
optimized volume**



Timothy Kelley
23 hrs

...

Which number is displayed on the number plate? The master # or the unit #?

Master number is displayed



- RACE READY UPGRADE WILL BE ON WWW.SpeedUTV.COM
- WEBSITE MID-JULY
- (Don't call Ginger asking to upgrade yet ;))



List of Parts / Accessories on Race Ready Car, Everything on RG edition Plus:

- Carbon Fuel Cell
- Carbon Body & Bed
- Added Door-Bars, welded clamps
- Aluminum Roof Skin
- Aluminum Firewall
- Window Nets

- Parker Pumper
- Fire Extinguisher
- Tool Bag
- Impact
- Medical Kit
- Safety Equipment
- 12" GPS + Mount

- Front Bumper
- Front Lower Light Bar
- Front Upper Light Bar
- Rear Chase Light
- Spare Tire/Wheel
- Jack

Note: Race ready build only available on El Diablo Model

- **Pick Your Colors – (Suspension/Springs/Cage)**
- **Race Graphics – Personalized with sponsor logos**
- **Chassis Certification SCORE/BITD (for first year)**

Note: All accessories available for purchase individually for upgrade on non-race ready vehicles





- Order now at:
WWW.SpeedUTV.COM