

# **SPEED UTV**

**SPEED UTV DESIGN PRESENTATION**

**3-27-20**

**Robby Gordon – Todd Romano**

**Daniel Granger – Kyle Swoboda**

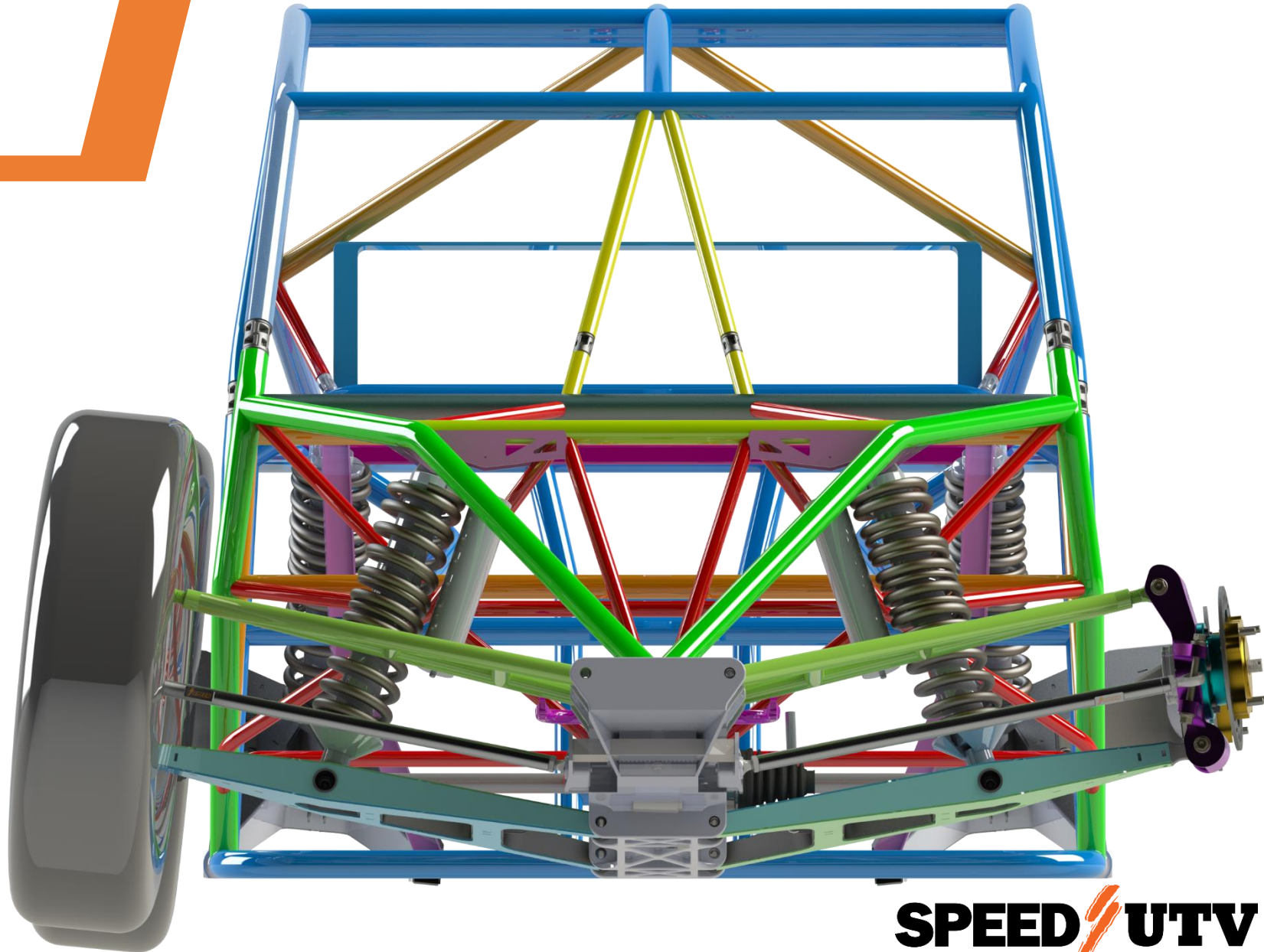
# Speed UTV – Four Seater



**SPEED/UTV**

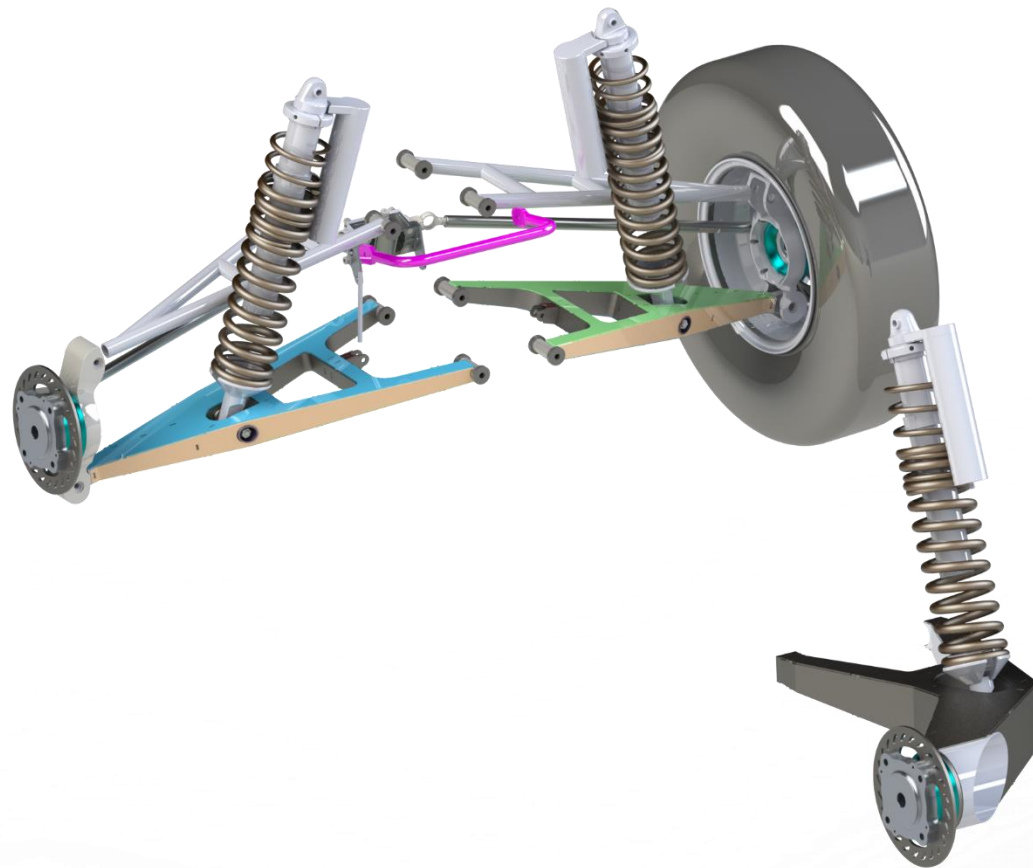
# Fast stats:

- **Horsepower: 230hp-300hp (e85)**
- **Wheelbase: 120"**
- **Ground clearance: 15"**
- **32" tires stock , will clear up to 35" tires**

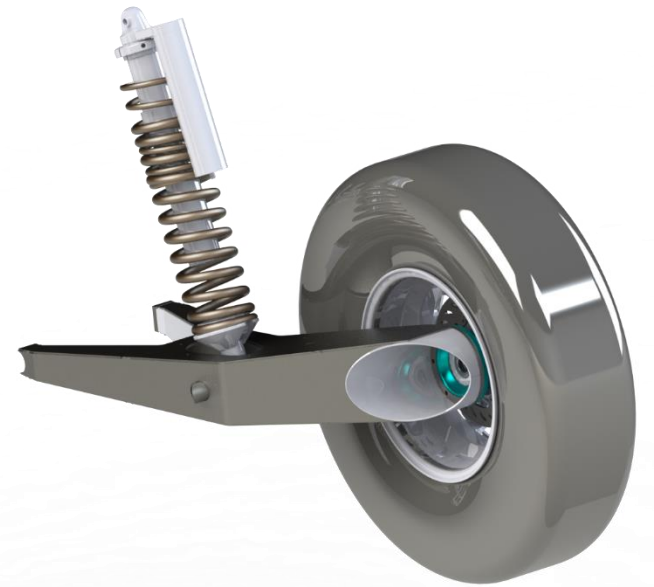


**SPEED/UTV**

# Suspension



**25" of Usable Travel**

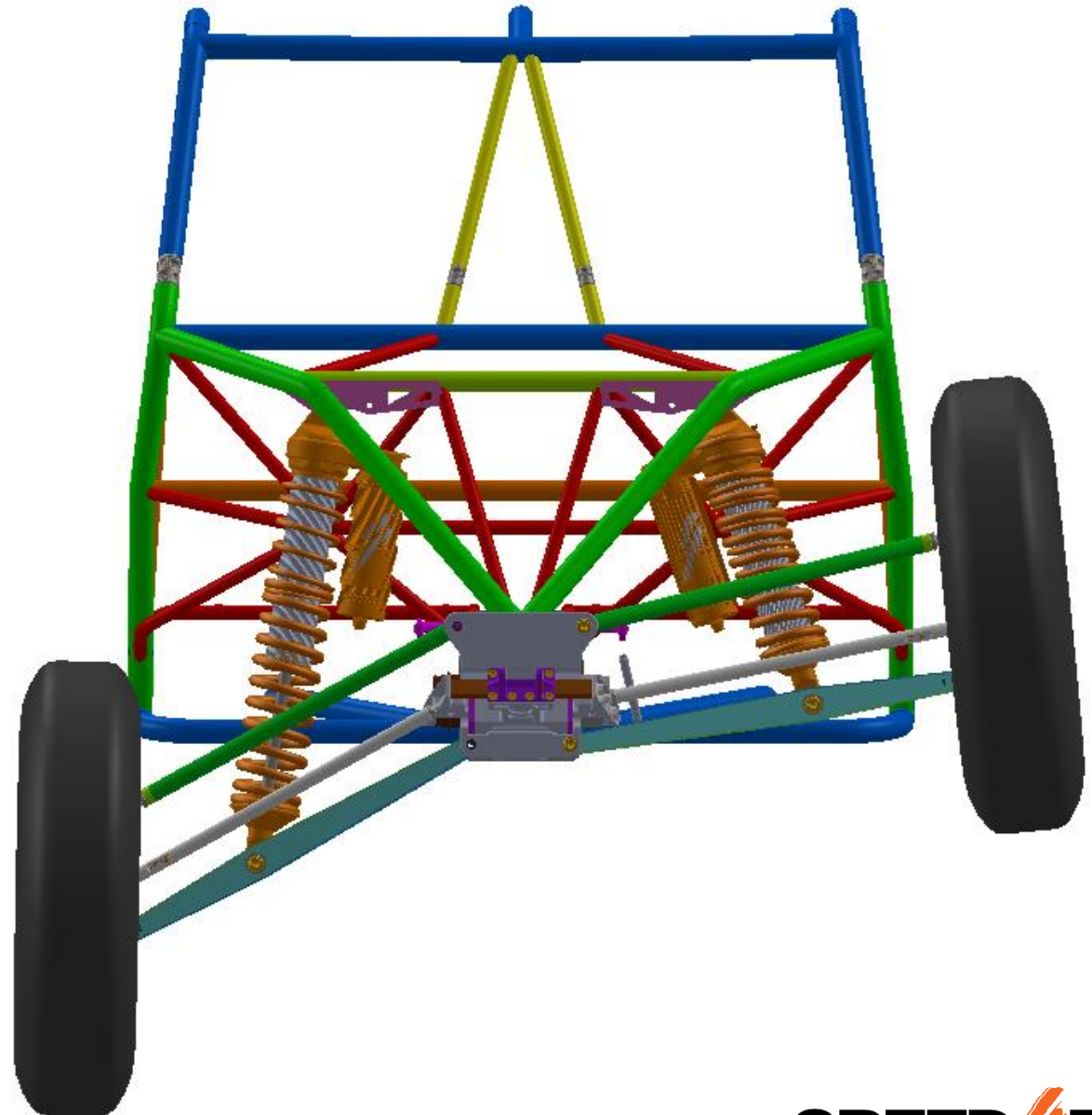




# Suspension

## Front Suspension Specs:

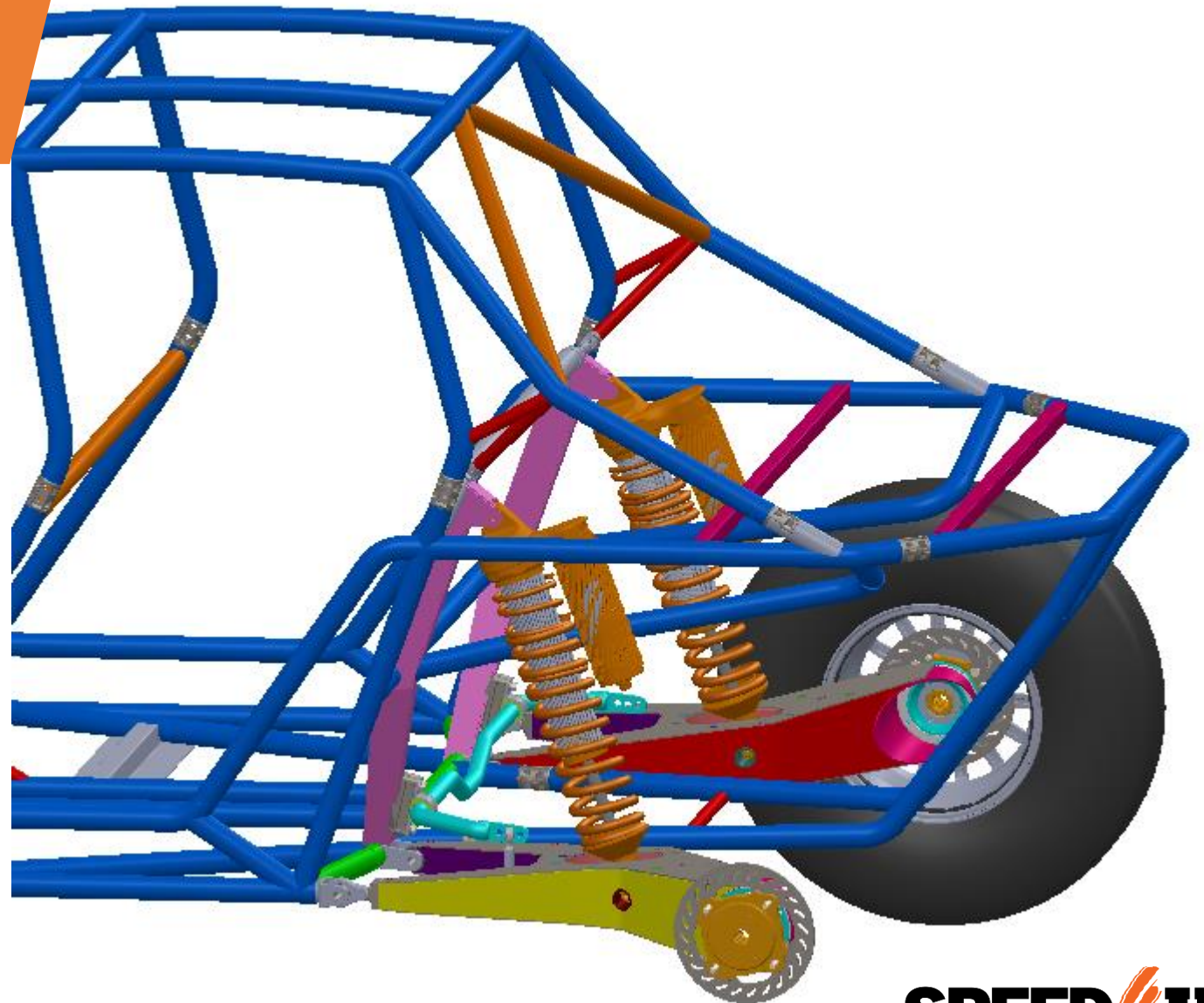
- Patented -Reversible LCA, UCA
- Shock mounted on lower control arm
- Shock angle optimized for maximum rising rate



# Suspension

## Rear Suspension Specs:

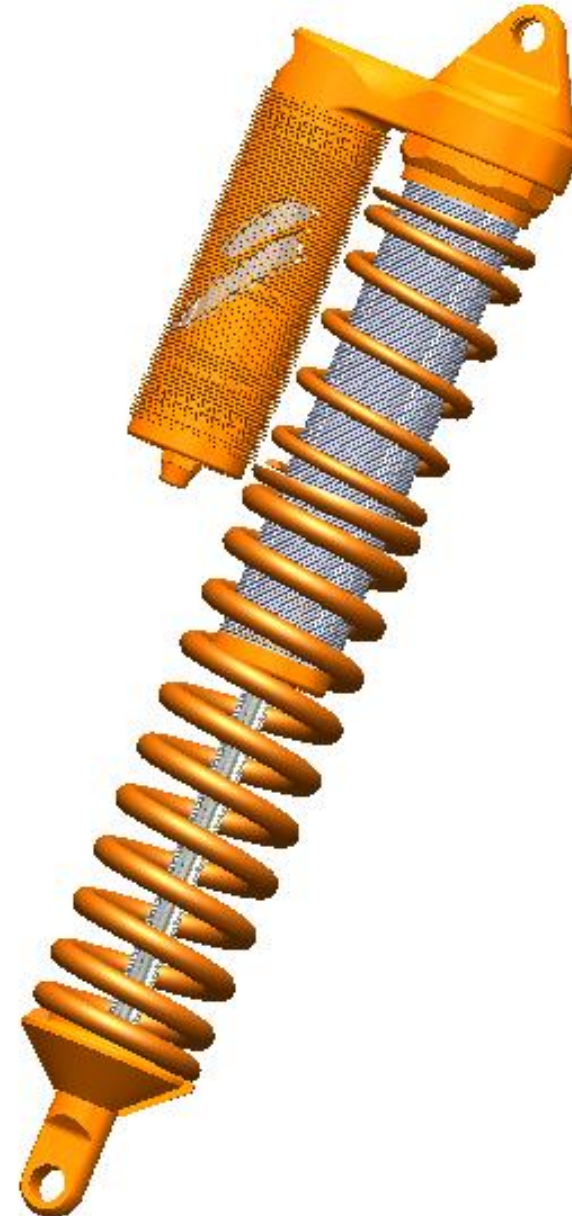
- Patented - Reversible Semi-Trailing arm
- Shock angle optimized for maximum rising rate



# Suspension

## Shock Specs:

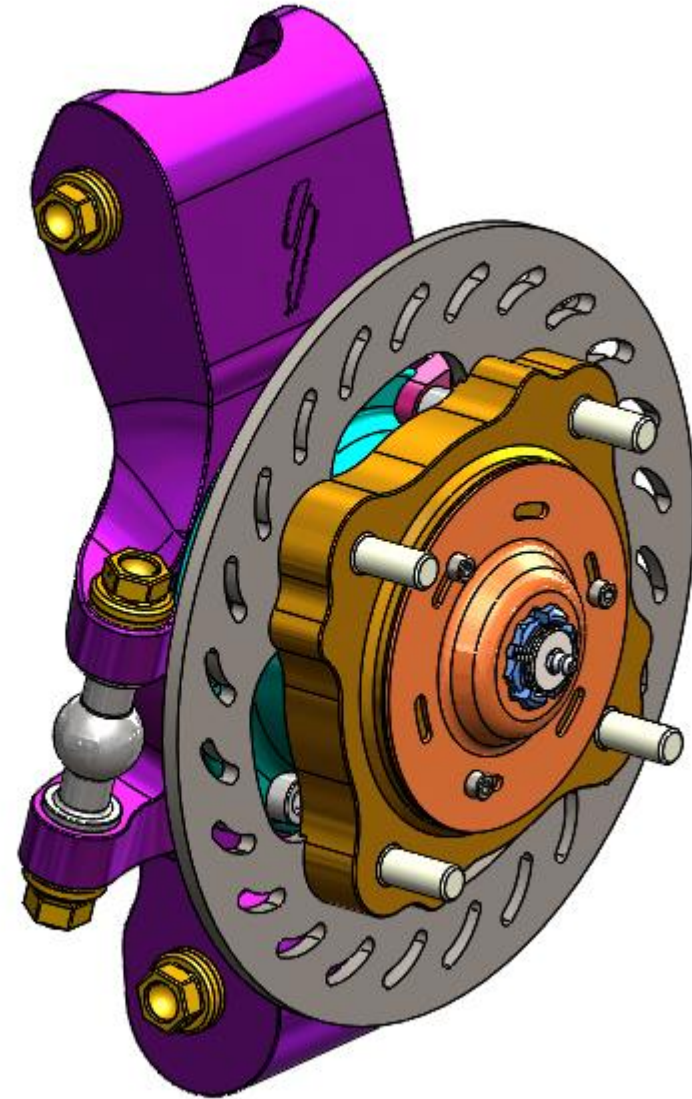
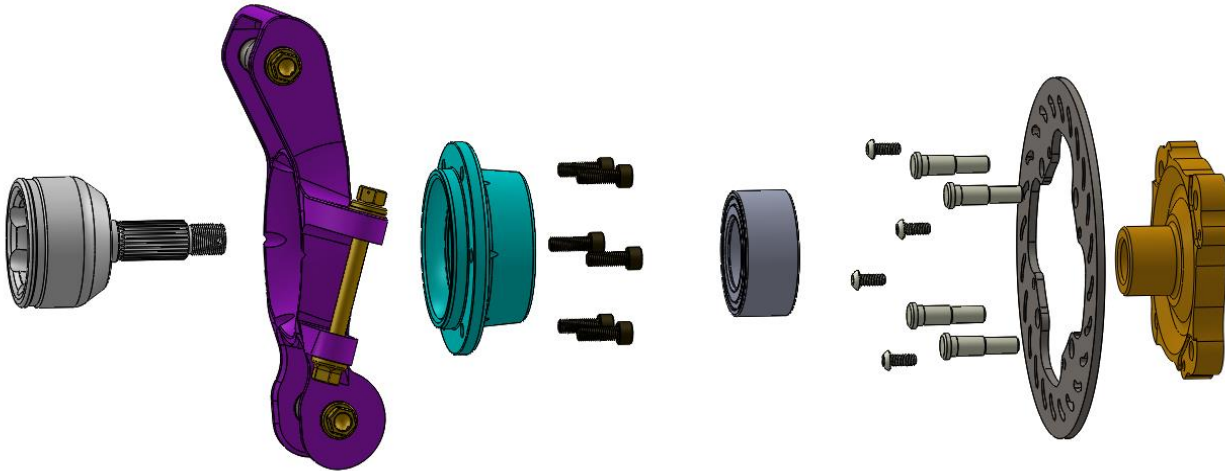
- 3.25" Internal Bypass
- 12" Stroke
- 360 degree clock-able piggyback reservoir
- External Independently adjustable rebound and compression
- Dural rate springs
- Finned reservoir



# Suspension

## Upright/Hub Specs:

- Forged Aluminum Upright
- Universal Hub and bearing (all 4 corners)
- Fully shouldered bolts

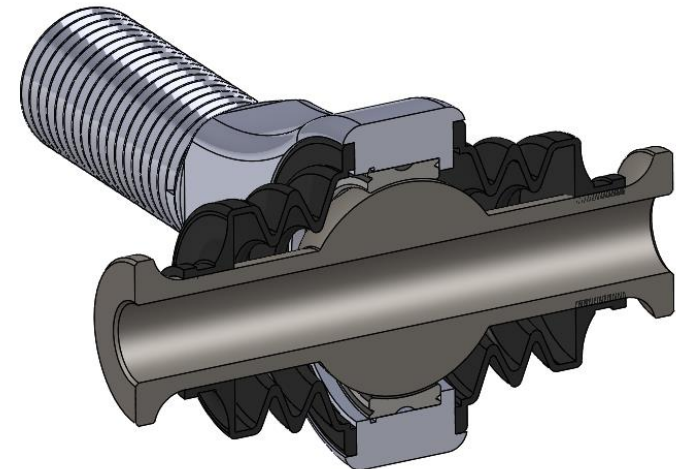
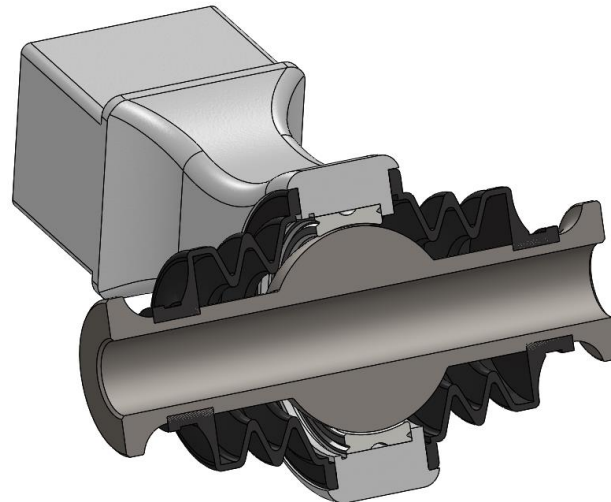
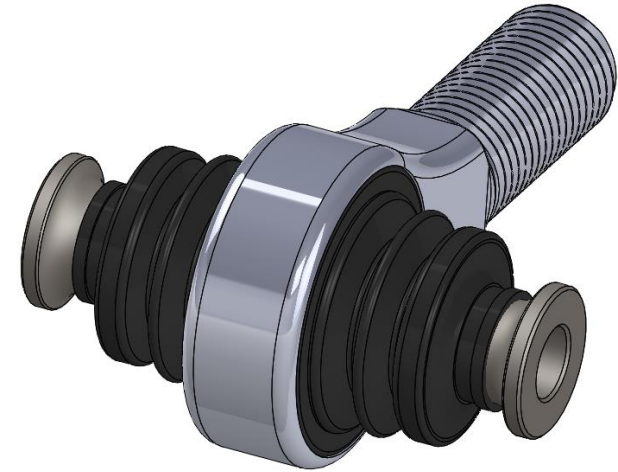
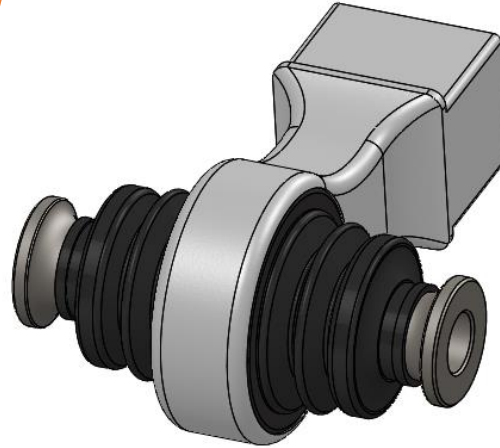




# Suspension

## Bearing Specs:

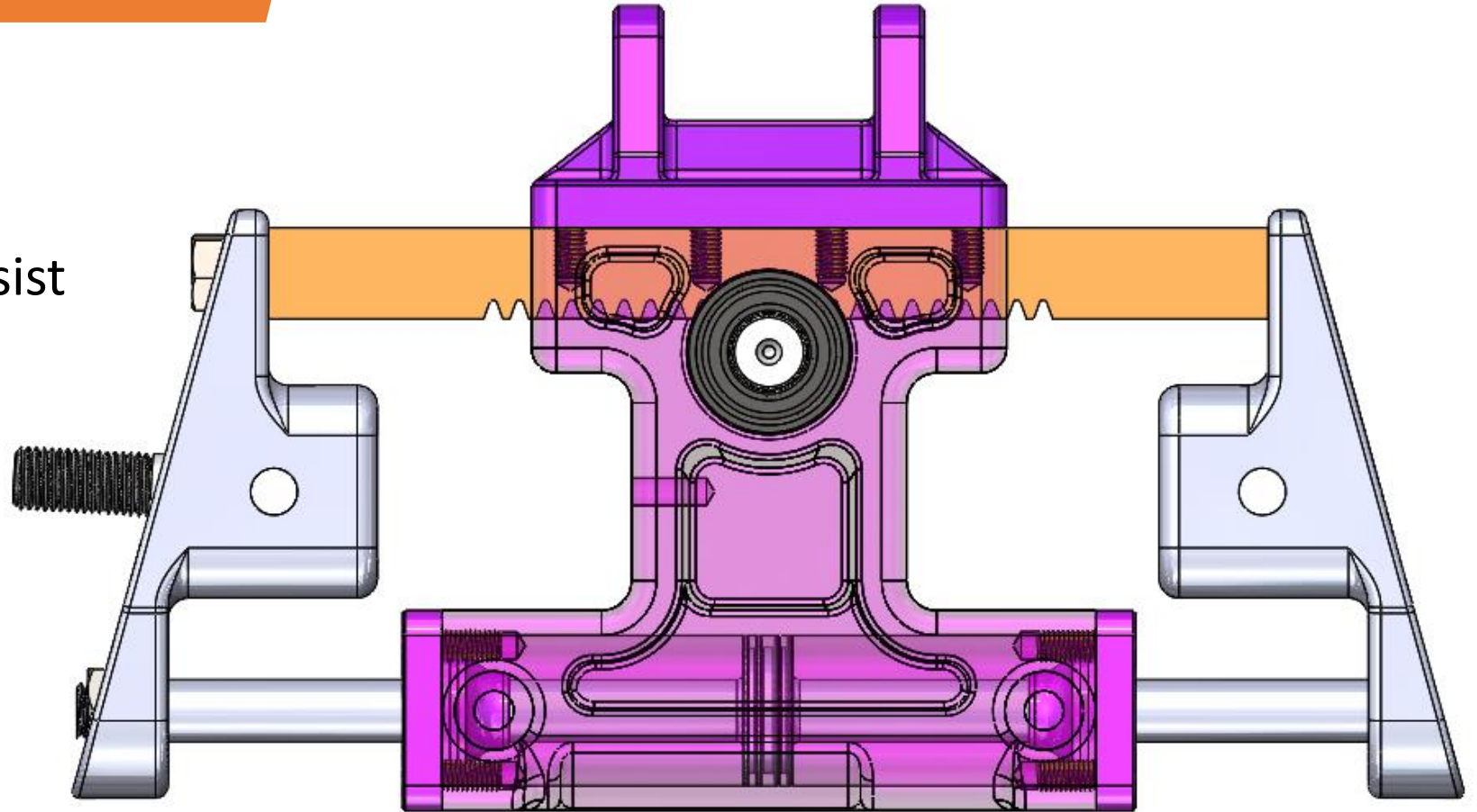
- Custom bearings with built in misalignment
- External rubber boot weather protection
- Replaceable, same bearings used multiple places on car.



# Steering

## Steering specs:

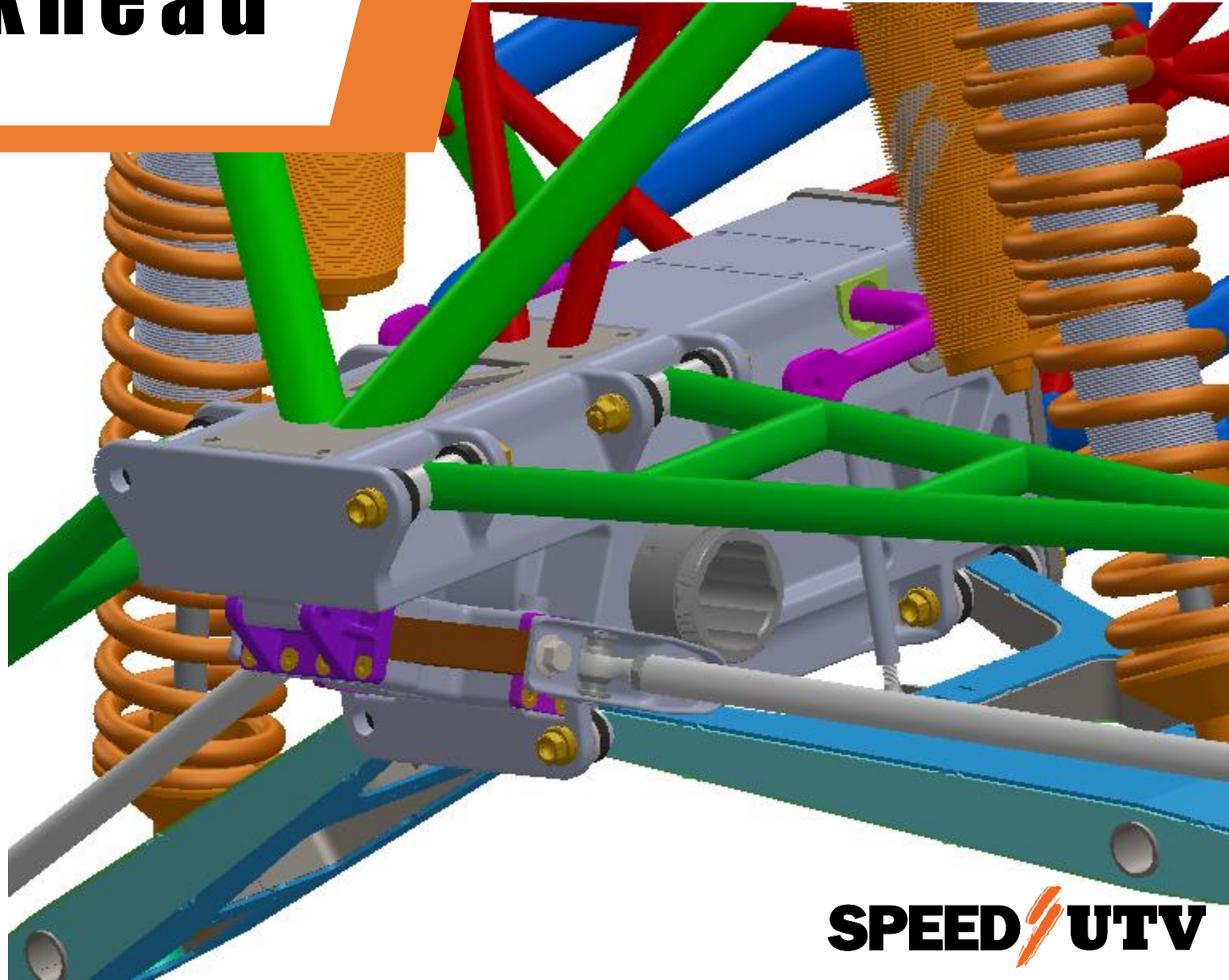
- Electro-Hydraulic assist power steering
- 1.75:1 Ratio
- Less than 0.5 deg. of Bump steer



# Patented bulkhead

## Integrated Bulkhead:

- Patented RG AWD Trophy Truck (Unicorn) inspired Bulkhead
- Mounts suspension, steering, and front differential all in one structure

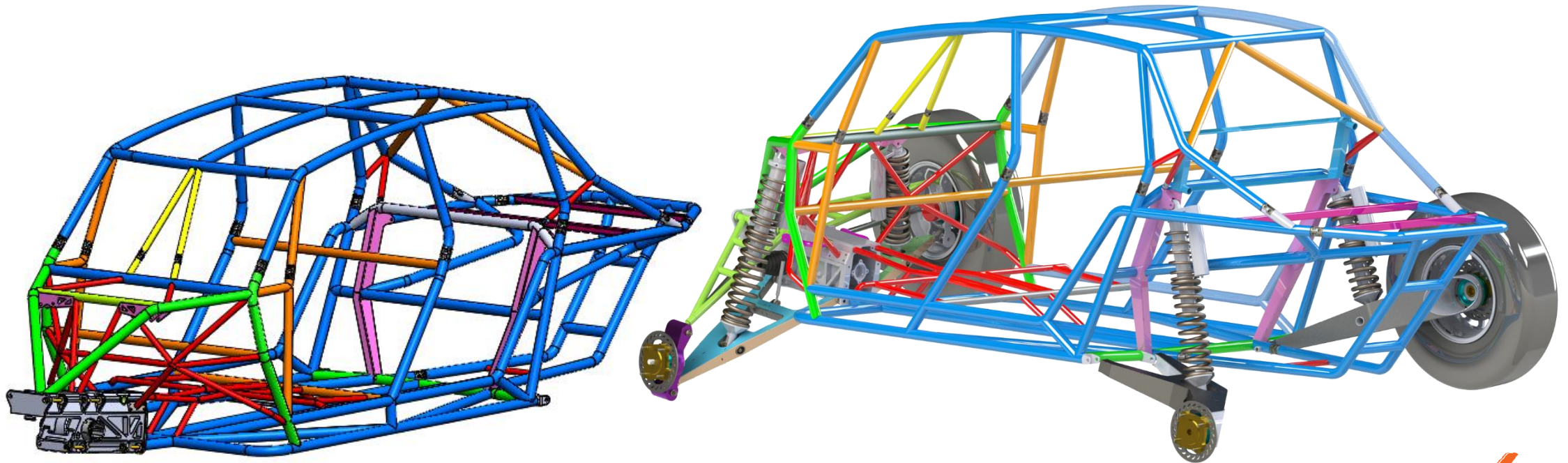




# Chassis

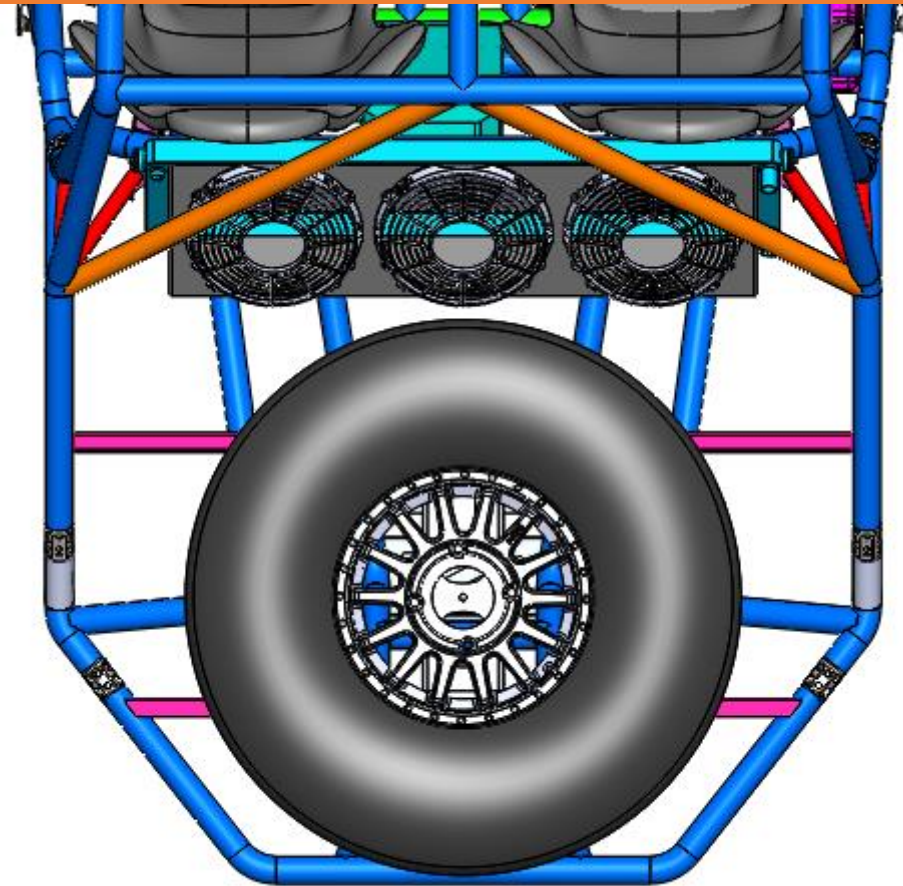
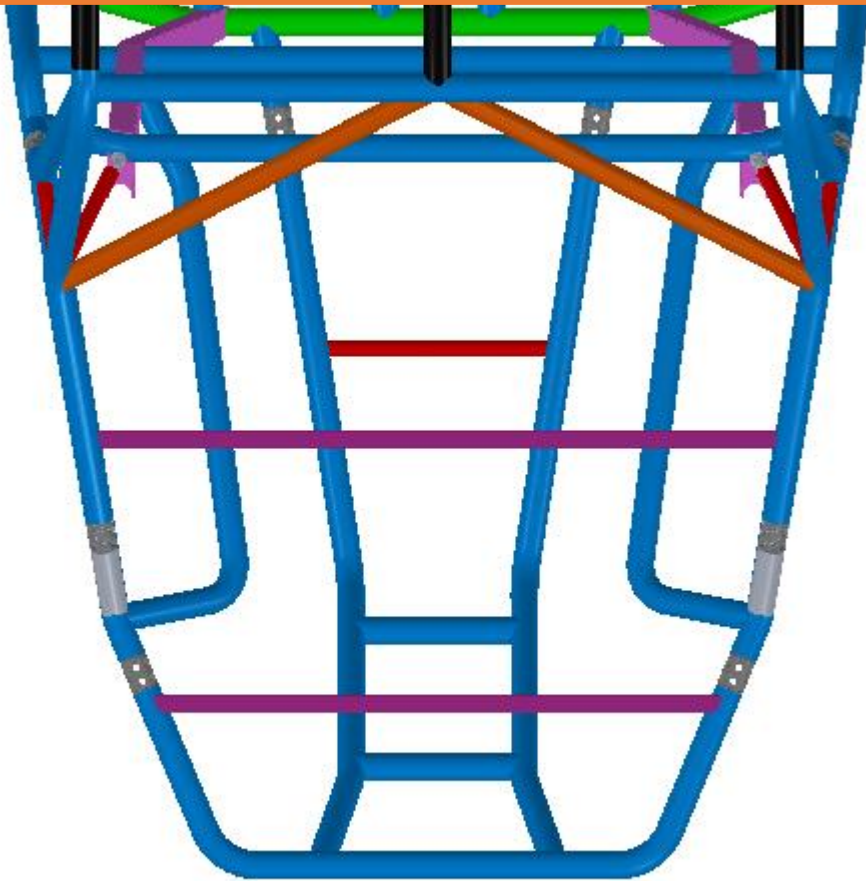
## Chassis Specs:

- DOM equivalent tubing
- Added factory FIA style A-Pillar support (morgi-bar)
- Patented V-Bars front & Rear
- Patented Roof Spine





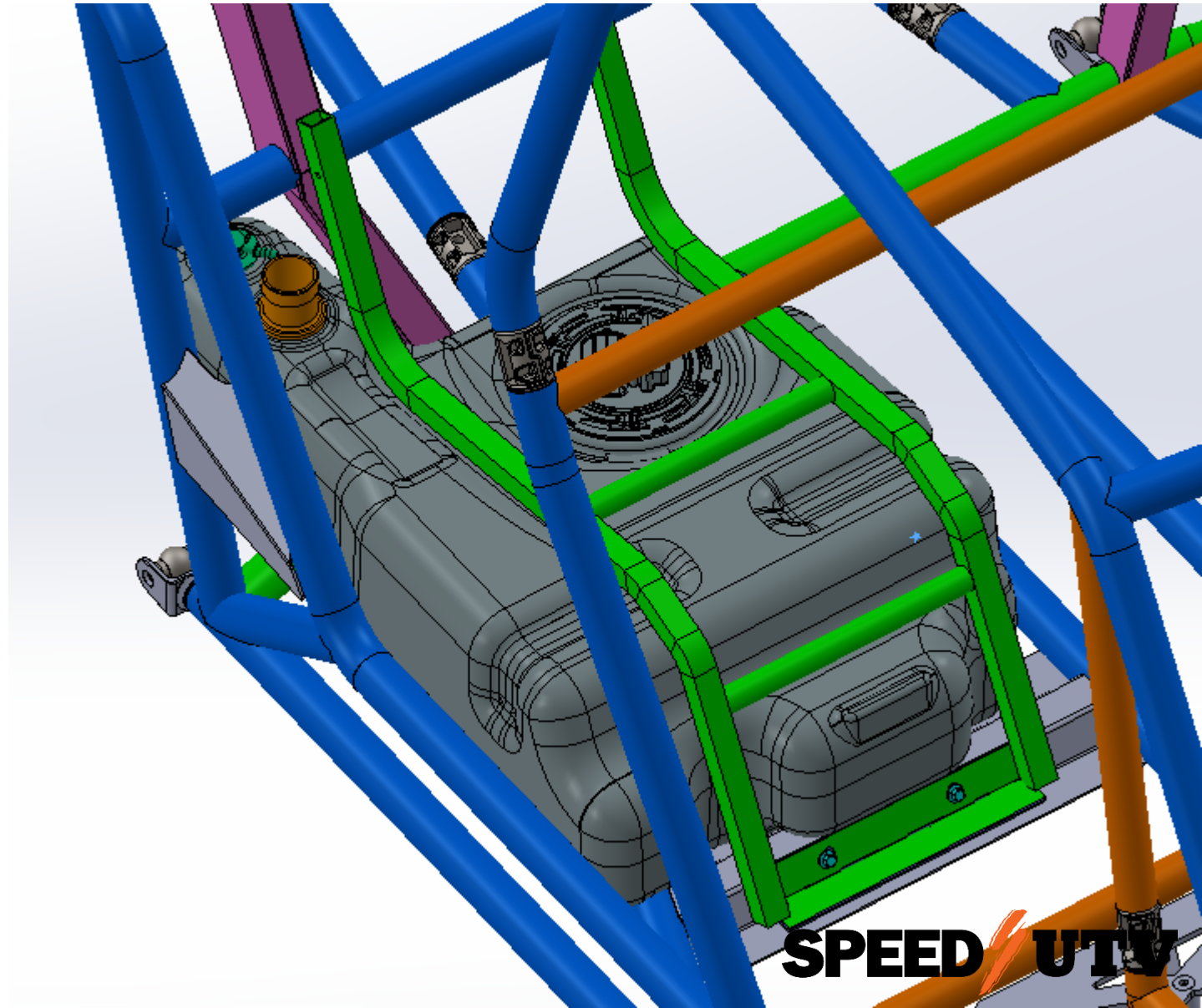
# WIDER REAR BED PORTION OF FRAME



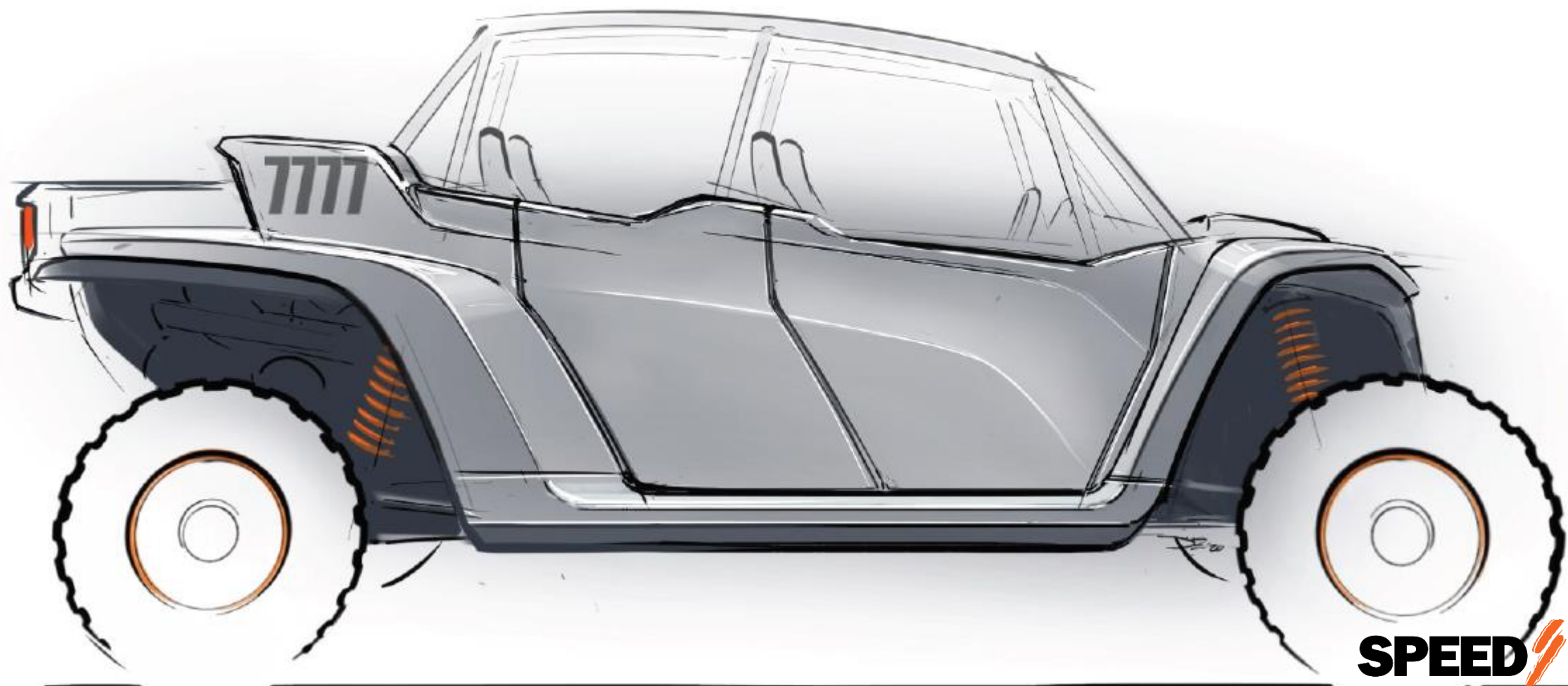
# Fuel

## Fuel Tank:

- ~15 Gal Capacity
- High flow fuel pump

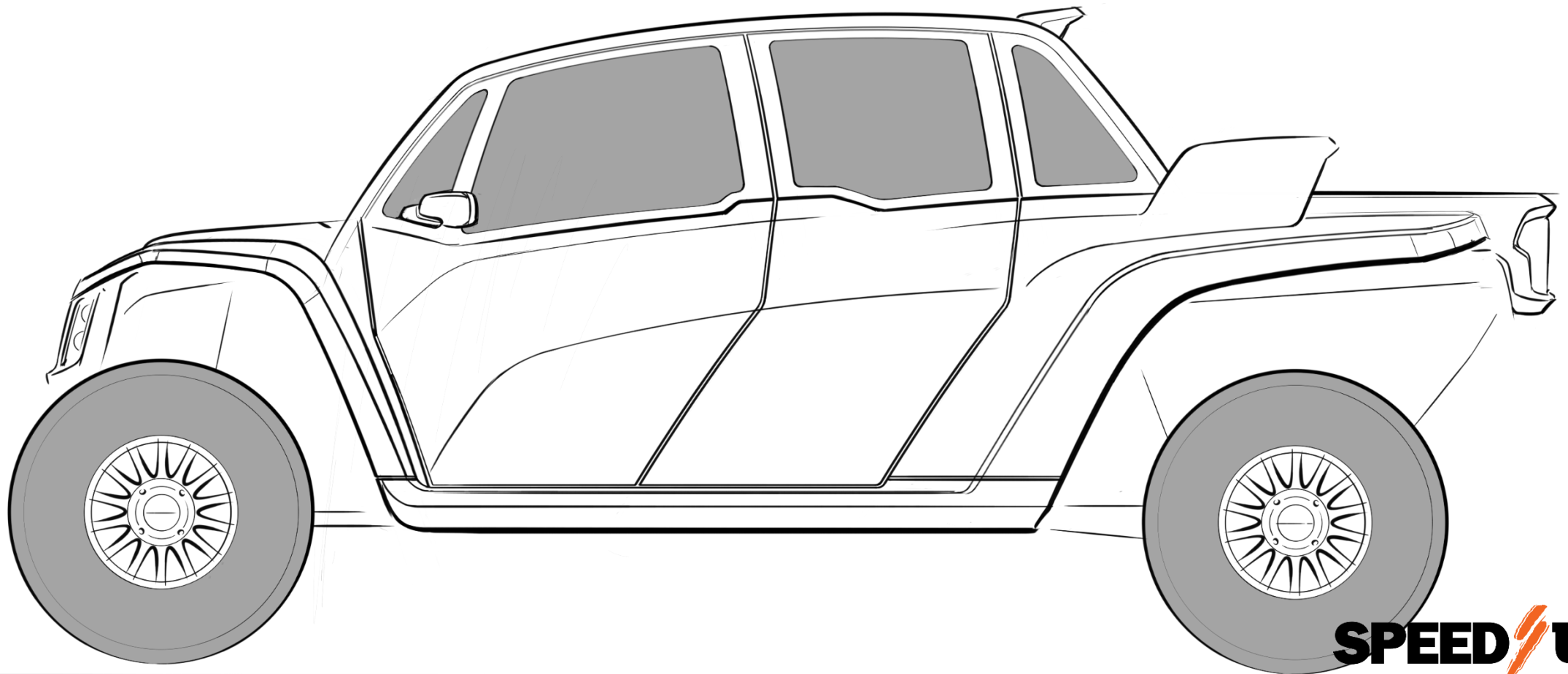


# Body



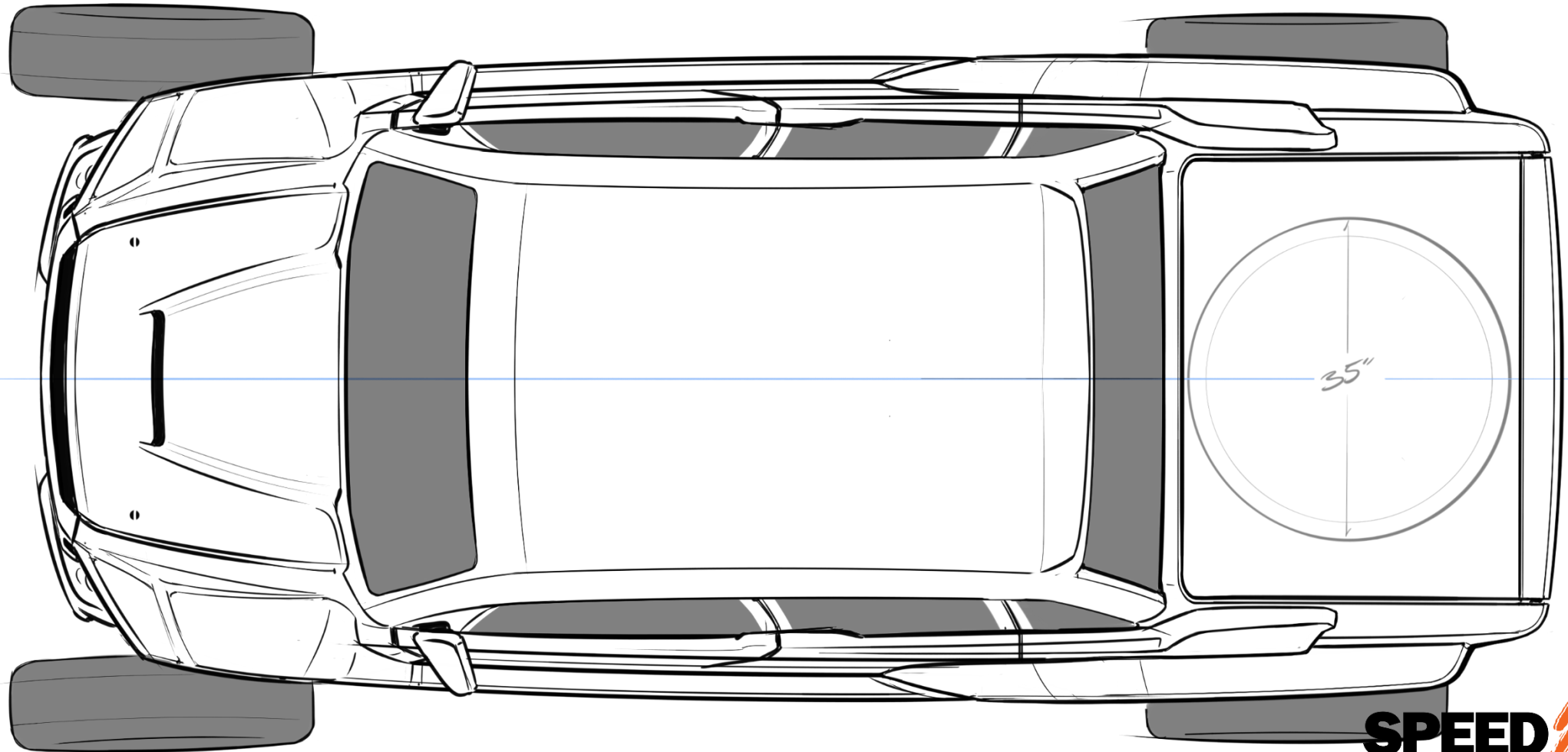
**SPEED/UTV**

# Body

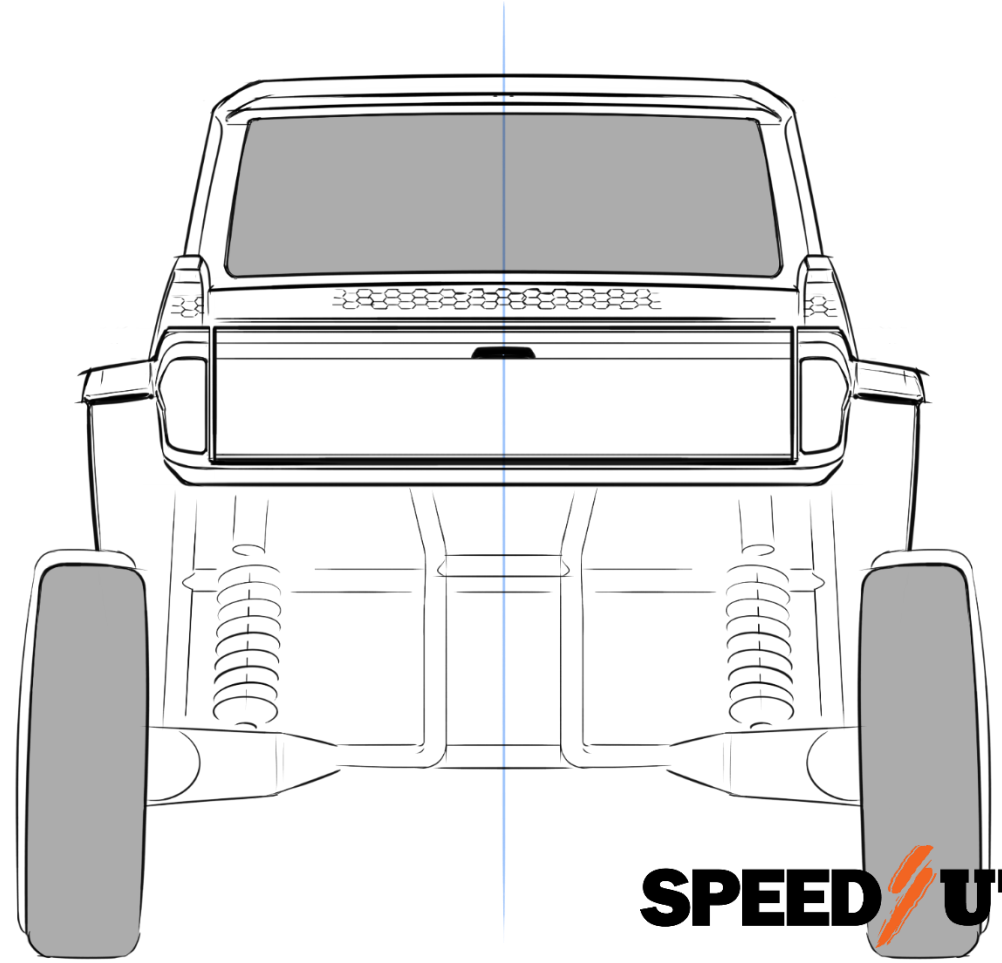
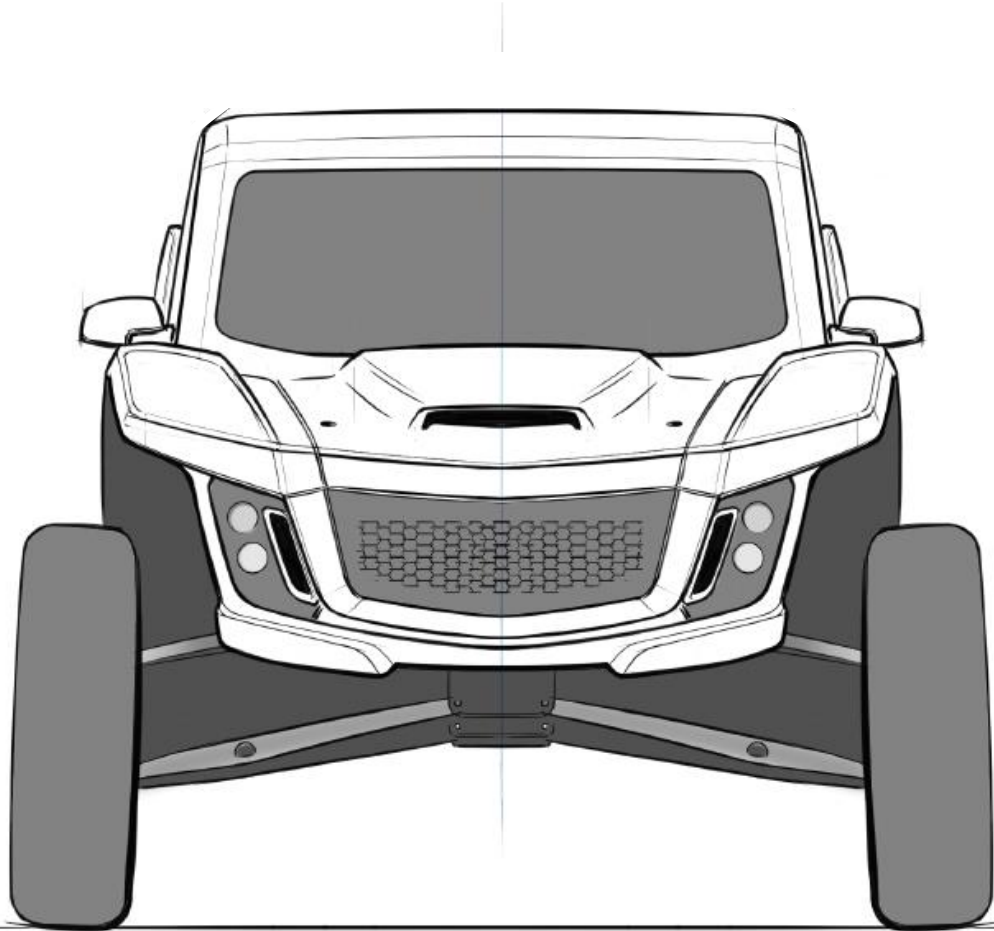




# Body

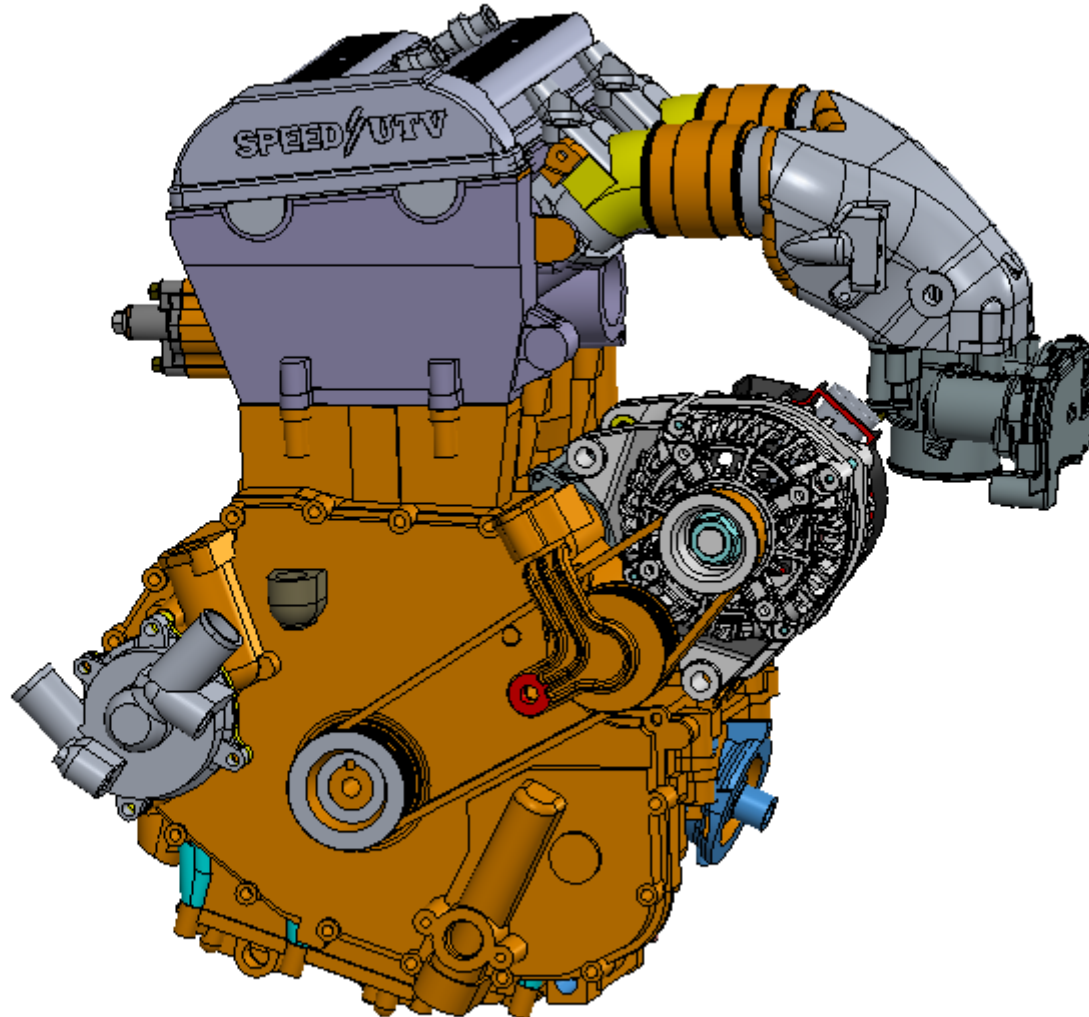


# Body



# SPEED UTV

**Stay tuned to our  
social media for  
more...**



**@SpeedUTV**

**SPEED  UTV**