

PRODUCTION CAR UPDATES



8/26/2021



9PM/ET 6PM/PT



/SPEEDUTV



/SPEEDUTV



@SpeedUTV



SPEED UTV



***Robby Gordon
Todd Romano***

***Daniel Granger
Jeff Schidlowsky
Kyle Swoboda***

SPEED UTV

DESIGN PRESENTATION: 71

Suspension Assembly

SUSPENSION

DRIVETRAIN

INTERIOR

BODYWORK

ANNOUNCEMENTS



- Reversible Upper & Lower Control Arms
- Dual Stage Springs
- Adjustable Rebound & Compression
- Multi-Stage Internal Bypass Shocks



Suspension Assembly

SUSPENSION

DRIVETRAIN

INTERIOR

BODYWORK

ANNOUNCEMENTS



- Reversible Upper & Lower Control Arms
- Dual Stage Springs
- Adjustable Rebound & Compression
- Multi-Stage Internal Bypass Shocks



Suspension Assembly

SUSPENSION

DRIVETRAIN

INTERIOR

BODYWORK

ANNOUNCEMENTS



- Reversible Upper & Lower Control Arms
- Dual Stage Springs
- Adjustable Rebound & Compression
- Multi-Stage Internal Bypass Shocks



Suspension Assembly

SUSPENSION

DRIVETRAIN

INTERIOR

BODYWORK

ANNOUNCEMENTS



- Reversible Upper & Lower Control Arms
- Dual Stage Springs
- Adjustable Rebound & Compression
- Multi-Stage Internal Bypass Shocks



Upright Assembly

SUSPENSION

DRIVETRAIN

INTERIOR

BODYWORK

ANNOUNCEMENTS



- Fully Shank
Bolts
- Floating Caliper
- Stainless Steel
Braided Brake
Lines
- Adjustable upper
rod end
- External grease
fitting for CV
- Black Hard
Anodized coating



Upright Assembly

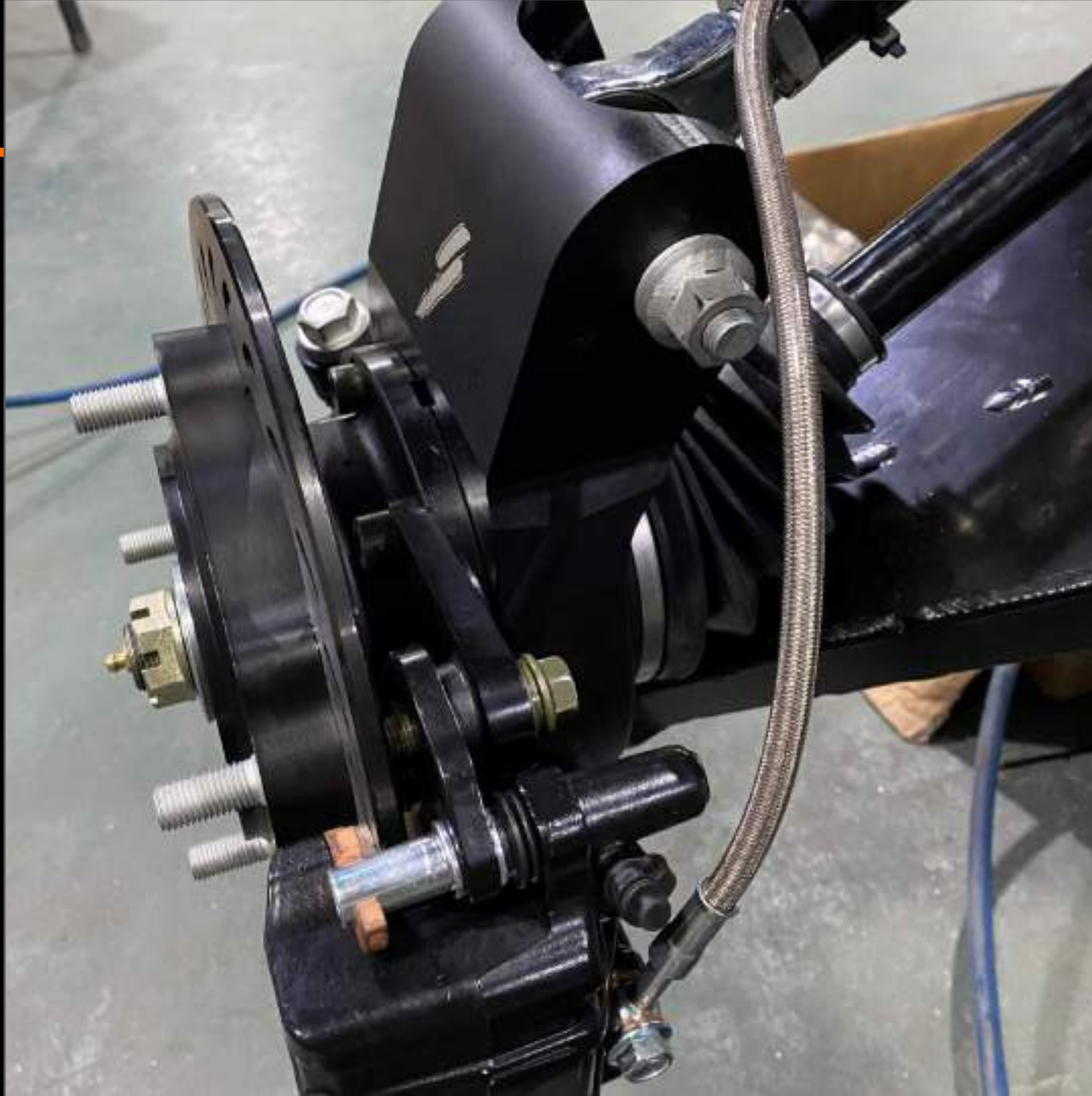
SUSPENSION

DRIVETRAIN

INTERIOR

BODYWORK

ANNOUNCEMENTS



- Fully Shanked Bolts
- Floating Caliper
- Stainless Steel Braided Brake Lines
- Adjustable upper rod end
- External grease fitting for CV
- Black Hard Anodized coating



TRAILING ARM SUSPENSION

SUSPENSION

DRIVETRAIN

INTERIOR

BODYWORK

ANNOUNCEMENTS



- Boxed 4130 Steel
- Reversible Left to Right
- Stainless Steel Braided Brake Lines
- Adjustable Sway Bar



TRAILING ARM SUSPENSION

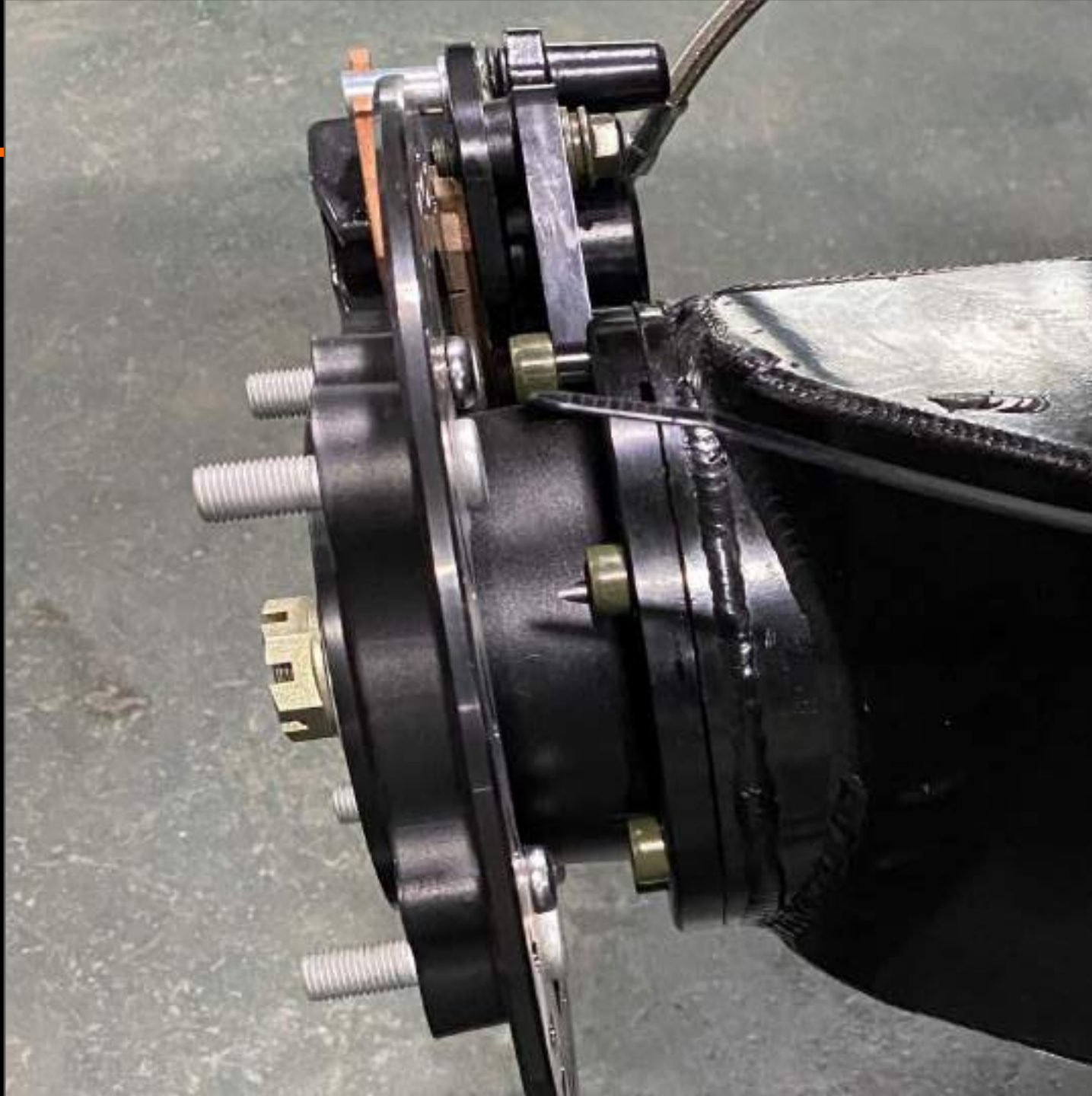
SUSPENSION

DRIVETRAIN

INTERIOR

BODYWORK

ANNOUNCEMENTS



- Bolt on Aluminum Hub Bearing Carrier
- Universal to all 4 corners
- Bolt on Caliper Mounting
- Fully Registered Lug Studs



ALUMINUM BULKHEAD

SUSPENSION

DRIVETRAIN

INTERIOR

BODYWORK

ANNOUNCEMENTS



- Counter Pressure
Cast A380 Al
- Reversible Left to
Right
- Structural Ribbing
- Fully Shankd
Bolts with Crush
Tubes
- Integrated
Steering Rack
- Locking front
differential



ALUMINUM BULKHEAD

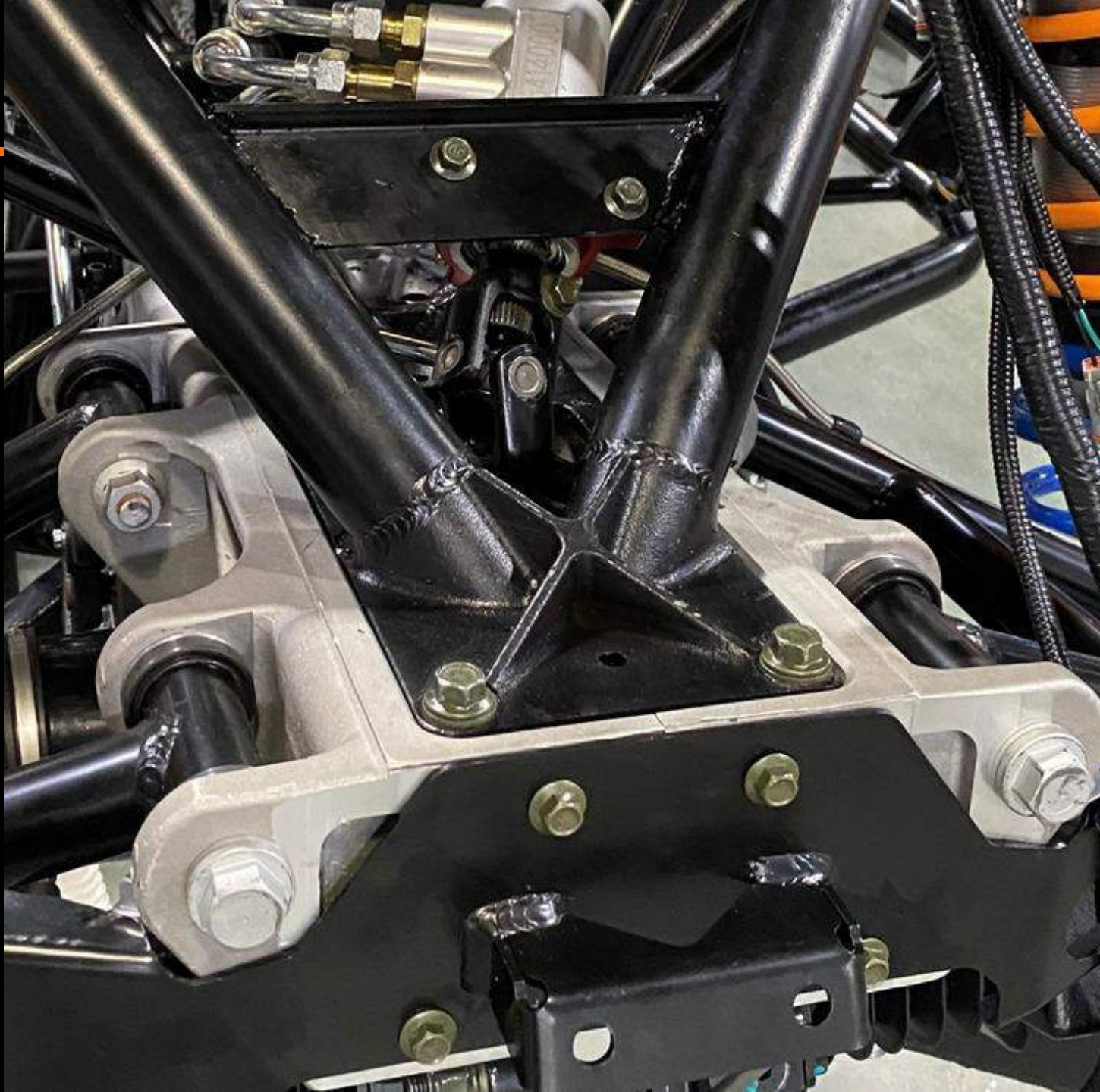
SUSPENSION

DRIVETRAIN

INTERIOR

BODYWORK

ANNOUNCEMENTS



- Counter Pressure
Cast A380 Al
- Reversible Left to
Right
- Structural Ribbing
- Fully Shank
Bolts with Crush
Tubes
- Integrated
Steering Rack
- Locking front
differential



ALUMINUM BULKHEAD

SUSPENSION

DRIVETRAIN

INTERIOR

BODYWORK

ANNOUNCEMENTS



- Counter Pressure
Cast A380 Al
- Reversible Left to
Right
- Structural Ribbing
- Fully Shankd
Bolts with Crush
Tubes
- Integrated
Steering Rack
- Locking front
differential



ALUMINUM BULKHEAD

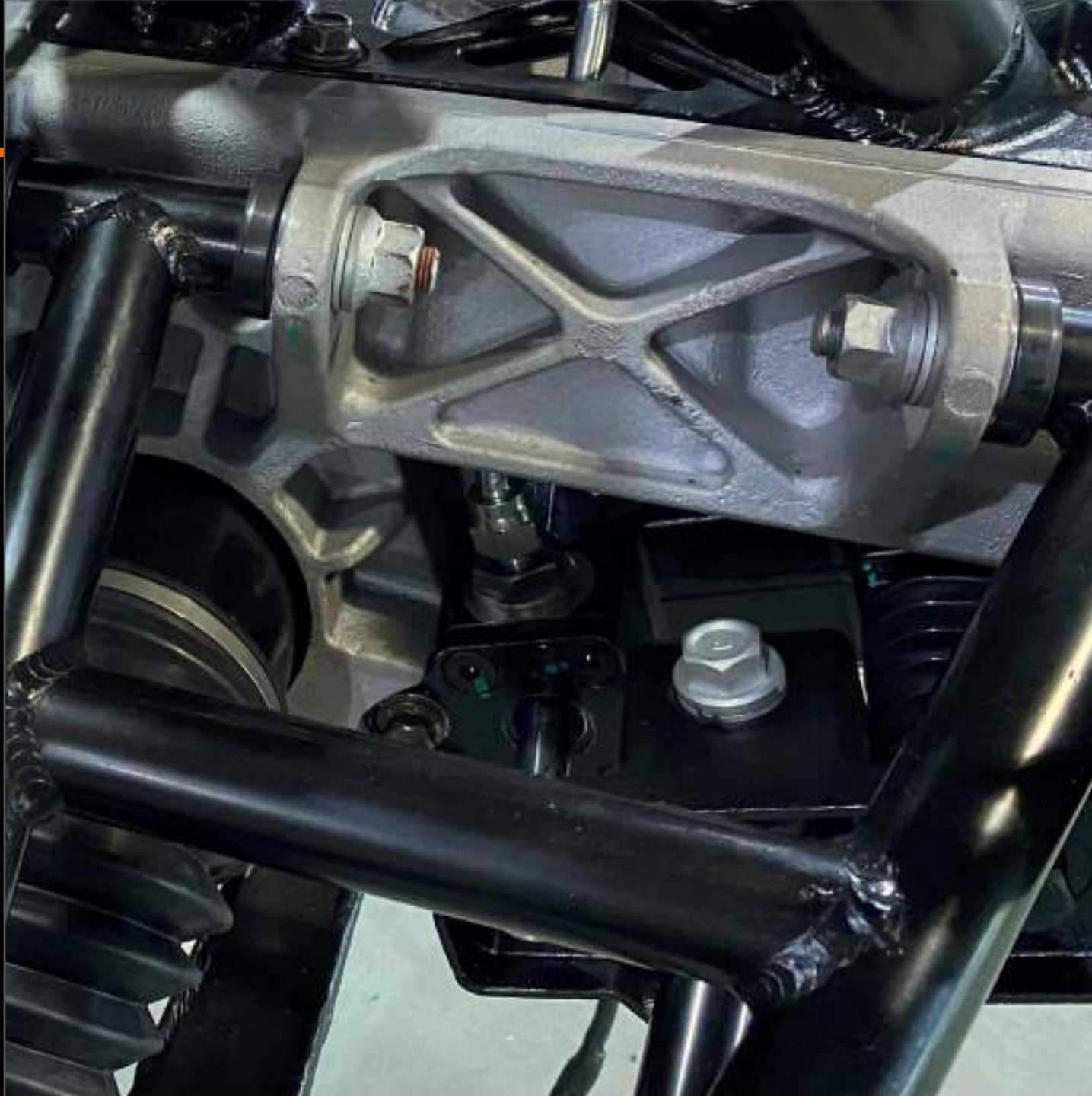
SUSPENSION

DRIVETRAIN

INTERIOR

BODYWORK

ANNOUNCEMENTS



- Counter Pressure
Cast A380 Al
- Reversible Left to
Right
- Structural Ribbing
- Fully Shankd
Bolts with Crush
Tubes
- Integrated
Steering Rack
- Locking front
differential



FIREWALL ACCESS PANNEL

SUSPENSION

DRIVETRAIN

INTERIOR

BODYWORK

ANNOUNCEMENTS



Access to:

- Throttle body
- Blowoff valve
- Plumbing
- ECU

*Note: Red Silicon
Tubes are for Pre-
Production Units Only*



COOLING SYSTEM

SUSPENSION

DRIVETRAIN

INTERIOR

BODYWORK

ANNOUNCEMENTS



→ Radiator

→ 3 10" fans for
powered cooling

→ High Temp
Radiator for
Engine Water

→ Integrated Oil
cooler

→ Low temp radiator
for intercooler
water



POWERTRAIN, PLUMBING


SUSPENSION

DRIVETRAIN

INTERIOR

BODYWORK

ANNOUNCEMENTS



- One Piece Turbine housing
- Integrated wastegate
- Hardline Plumbing near all heat sources

DRIVER CONTROLS

SUSPENSION

DRIVETRAIN

INTERIOR

BODYWORK

ANNOUNCEMENTS



- Push to Start
- Headlight Control Switch
- Wide Brake Pedal
- Steel Reinforced Steering Wheel
- Large Viewing area through steering wheel
- 10" LED Dash
- 3SPD Ratchet Shifter
- Manual 4WD lever



INTERIOR DETAILS

SUSPENSION

DRIVETRAIN

INTERIOR

BODYWORK

ANNOUNCEMENTS



- Push to Start
- Headlight Control Switch
- Wide Brake Pedal
- Steel Reinforced Steering Wheel
- Large Viewing area through steering wheel
- 10" LED Dash
- Wide Brake Pedal



INTERIOR DETAILS

SUSPENSION

DRIVETRAIN

INTERIOR

BODYWORK

ANNOUNCEMENTS



→ Injection Molded

→ Carbon Fiber

Texture

→ 10" LED Display

→ Tapered & Splined

Steering wheel

connection



INTERIOR DETAILS

SUSPENSION

DRIVETRAIN

INTERIOR

BODYWORK

ANNOUNCEMENTS



- 10" LED Display
- CANBUS Communication
- Gear Position
- Speed
- & Much More



SPEED/UTV 20

INTERIOR SHIFTERS

SUSPENSION

DRIVETRAIN

INTERIOR

BODYWORK

ANNOUNCEMENTS



- 3 Speed Sequential Ratchet Shifter
- P-R-N-1-2-3
- Mechanical 4WD Shifter
- 2WD-4WD(Open)-4WD(Locked)



INTERIOR SHIFTERS

SUSPENSION

DRIVETRAIN

INTERIOR

BODYWORK

ANNOUNCEMENTS



- 3 Speed
Sequential Ratchet
Shifter
- P-R-N-1-2-3
- Mechanical 4WD
Shifter
- 2WD-4WD(Open)-
4WD(Locked)



INTERIOR PASSENGER

SUSPENSION

DRIVETRAIN

INTERIOR

BODYWORK

ANNOUNCEMENTS



- Optional Second Dash Mounted in Glovebox
- Grab Handle
- Large Foot Box



LED HEADLIGHTS

SUSPENSION

DRIVETRAIN

INTERIOR

BODYWORK

ANNOUNCEMENTS



- Hazard Indicating Lights
- Switch-Back LED
- Illuminated SPEED “S” Logo
- High Beam & Low Beam Headlights



LED HEADLIGHTS

SUSPENSION

DRIVETRAIN

INTERIOR

BODYWORK

ANNOUNCEMENTS



→ Hazard Indicating
Lights

→ Switch-Back LED

→ Illuminated SPEED
“S” Logo

→ High Beam & Low
Beam Headlights



PLASTICS: BED

SUSPENSION

DRIVETRAIN

INTERIOR

BODYWORK

ANNOUNCEMENTS



- 35" Deep x 48" Wide
- Structural Ribbing
- CVT Air inlets in Number Plates
- Radiator Air Ducting
- Cup Holder in Tailgate



PLASTICS: BED

SUSPENSION

DRIVETRAIN

INTERIOR

BODYWORK

ANNOUNCEMENTS



- 35" Deep x 48" Wide
- Structural Ribbing
- CVT Air inlets in Number Plates
- Radiator Air Ducting
- Cup Holder in Tailgate



PLASTICS: REAREND

SUSPENSION

DRIVETRAIN

INTERIOR

BODYWORK

ANNOUNCEMENTS



- Integrated into body styling
- High clearance fenders
- Drop down tailgate
- LED Tail lights



PLASTICS: FRONT

SUSPENSION

DRIVETRAIN

INTERIOR

BODYWORK

ANNOUNCEMENTS



- Smooth Charcoal Black Finish on exterior plastics
- Promotes good adhesion to vinyl wraps
- Full Front firewall



PLASTICS: FRONT

SUSPENSION

DRIVETRAIN

INTERIOR

BODYWORK

ANNOUNCEMENTS



- Smooth Charcoal Black Finish on exterior plastics
- Ribbed Inner Door Panels
- Pockets
- Speakers



**PLASTICS:
FRONT**

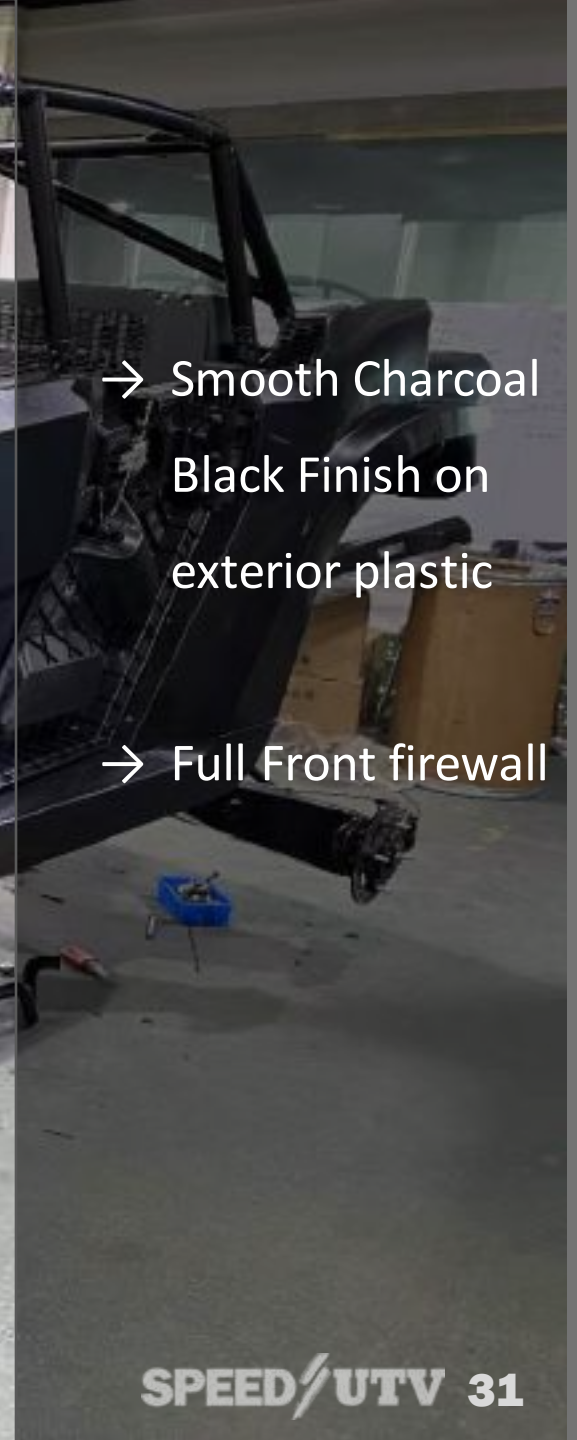

SUSPENSION

DRIVETRAIN

INTERIOR

BODYWORK

ANNOUNCEMENTS



- Smooth Charcoal Black Finish on exterior plastic
- Full Front firewall

PLASTICS: FRONT

SUSPENSION

DRIVETRAIN

INTERIOR

BODYWORK

ANNOUNCEMENTS



→ Multiple Vehicles
Coming together
for full scale
testing over every
procedure and
system



BULKHEAD REPLACEMENT

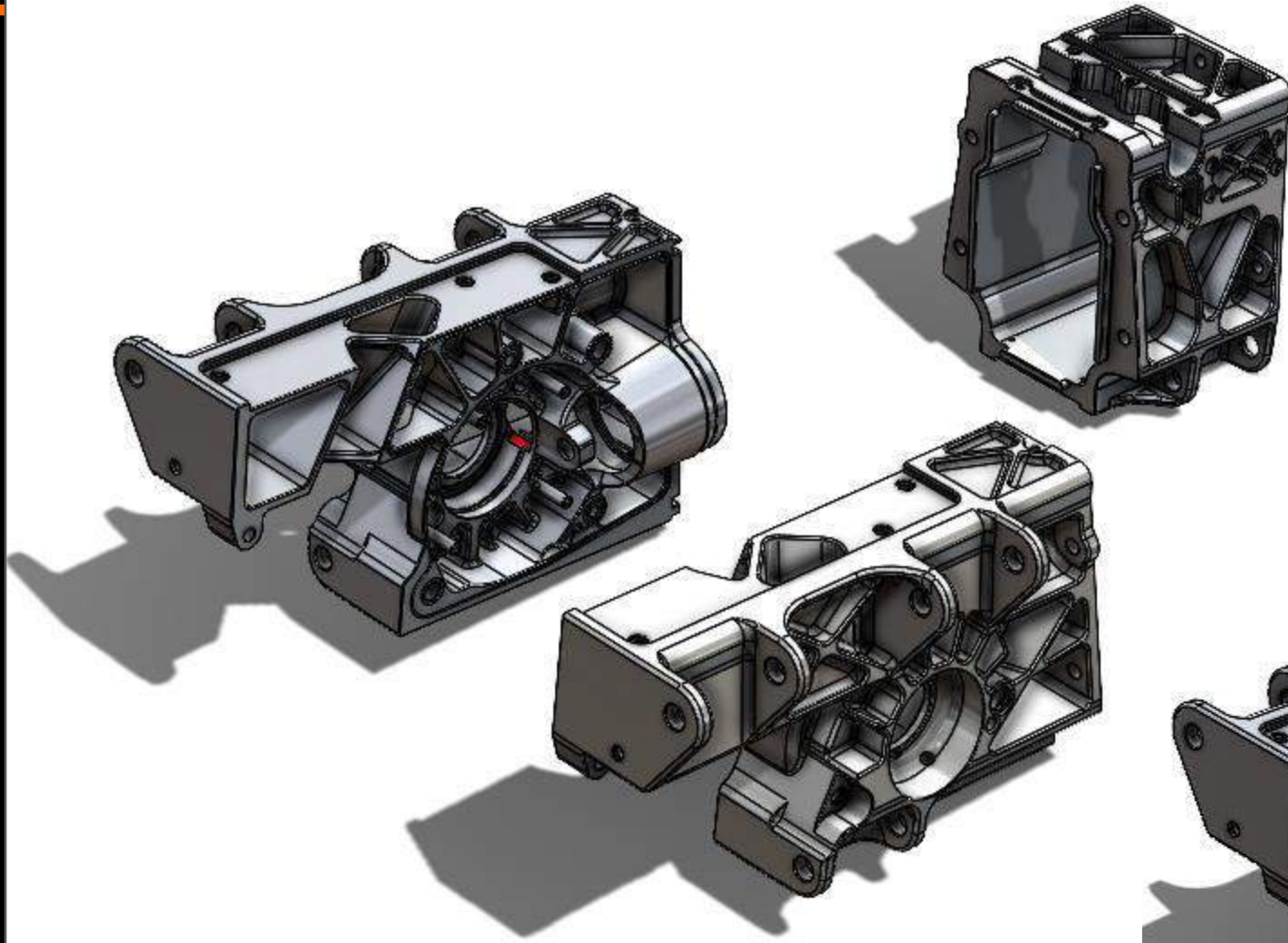
SUSPENSION

DRIVETRAIN

INTERIOR

BODYWORK

ANNOUNCEMENTS



What would happen if you wadup your car and need to replace the bulkhead???

- 3 separate pieces, can be replaced individually.
- Re-use all internals
- Just replace the part with damage
- Less expensive than full frame replacement



RACECAR CONVERSION

SUSPENSION

DRIVETRAIN

INTERIOR

BODYWORK

ANNOUNCEMENTS



BEST IN THE
DESERT
RACING ASSOCIATION

SCORE
INTERNATIONAL
OFF-ROAD RACING

If you are planning on **Racing** you Speed UTV and would like to be placed on the **Racer's List** for info about parts required for racing. **Email Karla, Mike or Connor**

- Door Bars
- Aluminum Roof, Firewall
- Fuel cell
- And more



RACECAR CONVERSION

SUSPENSION

DRIVETRAIN

INTERIOR

BODYWORK

ANNOUNCEMENTS



Rugged Radio
faceplate with
Bulkhead audio jack
which will be featured
on production units



EVENTS:
ORN

SUSPENSION

DRIVETRAIN

INTERIOR

BODYWORK

ANNOUNCEMENTS

Westfield

NORTH COUNTY ESCONDIDO

August 28th

11^{am} - 7^{pm}

TOYOTA ESCONDIDO

OFF ROAD NIGHTS

PRESENTED BY

TEC DIRT LIFESTYLE FESTIVAL

SCHAMPAT

METHOD RACE WHEELS

TEMECULA

STEEL-IT

Superior Media

DIRT ALLIANCE

CST TIRES

Torco

SPEED

MAXXIS

LINE-X

PEDAL COMMANDER

rugged

RIOT GENE

- Speed Will be at Off Road Nights in ESCONDIDO Aug 28th.
- The El Jefe Prototype will be on Display
- Along with the Speed Merch Trailer



EVENTS: SAND SPORTS

SUSPENSION

DRIVETRAIN

INTERIOR

BODYWORK

ANNOUNCEMENTS



**SPEED UTV
BOOTH: 1034-OS,
1036-OS, MERCH**



- Speed Will be at Sand Sports Super Show
- Costa Mesa, CA
- Sep 17-19
- UTVs Will be on Display
- Along with the Speed Merch Trailer

SEE YOU THERE!!!





SPEED  UTV

ENGINEERING THE FUTURE OF OFF ROAD