

# ***SPEED UTV DESIGN PRESENTATION: 60***



**ROBBY GORDON, TODD ROMANO**

**DANIEL GRANGER, Jeff Schidlowsky, Kyle Swoboda**

**5/27/21**



# THROWBACK THURSDAY



ultrawheelcompany Throwback  
Thursday to Robby Gordon and his  
Valvoline TT!

6m



Innovation for Generations

**SPEED**  **UTV**

ENGINEERING THE FUTURE OF OFF ROAD

# El Jefe on the Rocks

We took the El Jefe out to Johnson Vally for some testing in the rocks.

The Forged Speed Clutches worked Great!

**SPEED**  **UTV**





# El Jefe on the Rocks

We took the El Jefe out to Johnson Vally for some testing in the rocks.

The Forged Speed Clutches worked Great!

**SPEED**  **UTV**



ENGINEERING THE FUTURE OF OFF ROAD

# El Jefe on the Rocks

We took the El Jefe out to Johnson Vally for some testing in the rocks.

The Forged Speed Clutches worked Great!

**SPEED**  **UTV**



ENGINEERING THE FUTURE OF OFF ROAD

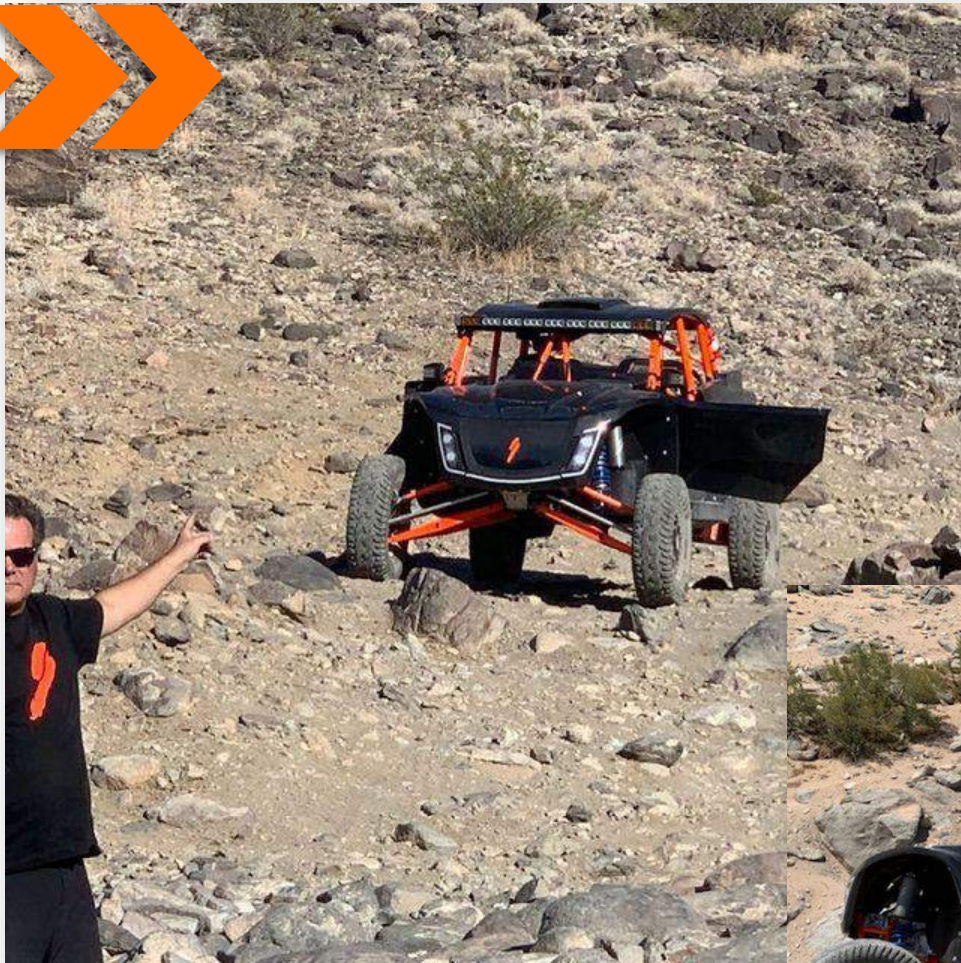


# El Jefe on the Rocks

We took the El Jefe out to Johnson Vally for some testing in the rocks.

The Forged Speed Clutches worked Great!

**SPEED**  **UTV**



ENGINEERING THE FUTURE OF OFF ROAD

# Instrument Pannel

## FEATURES

- Two Main Screens
- Two Phone Screen Mirroring options
- Two External Camera Inputs

Optional Gyro Integration

**SPEED/UTV**





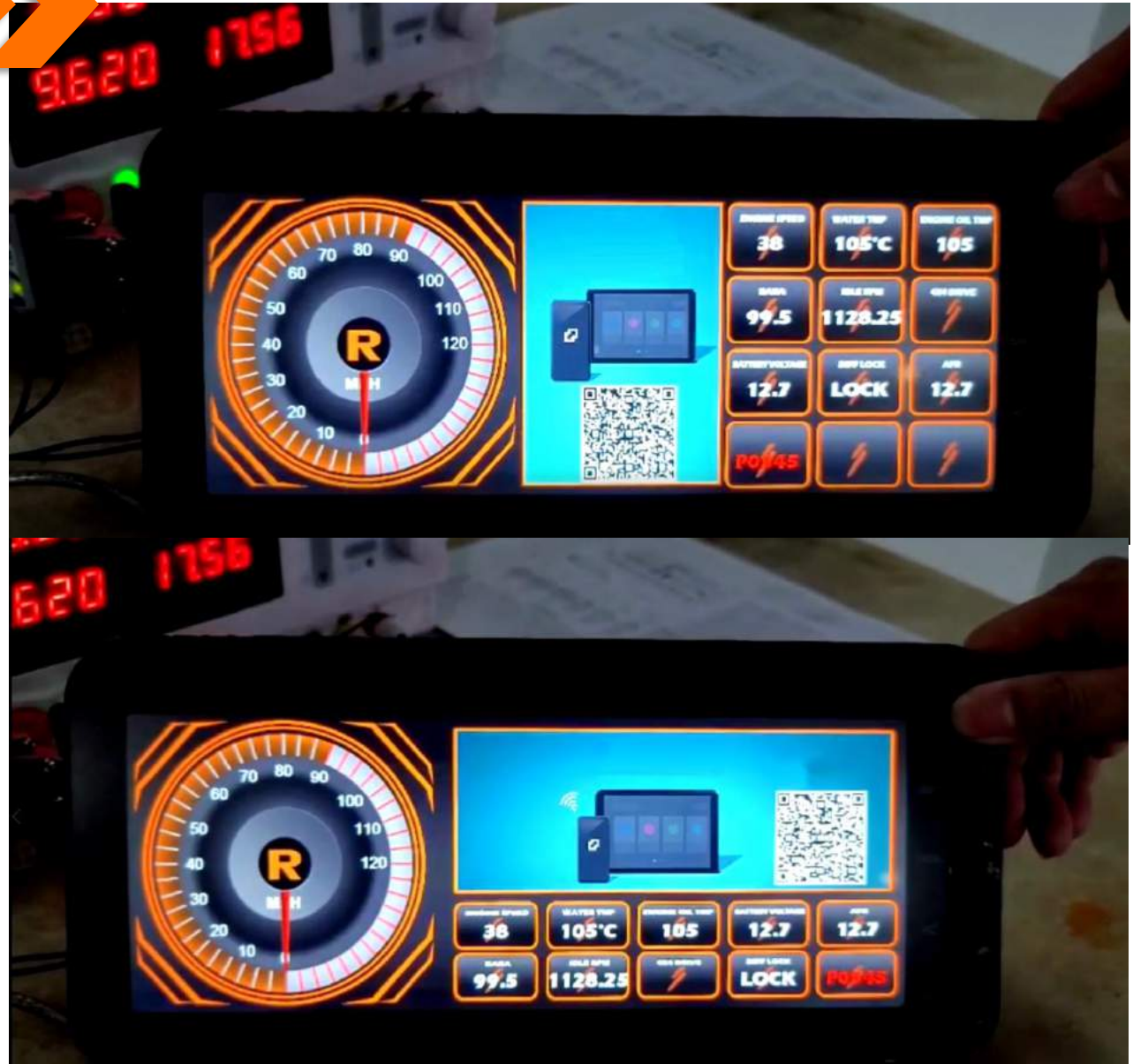
# Instrument Pannel

## FEATURES

- Two Main Screens
- Two Phone Screen Mirroring options
- Two External Camera Inputs

Phone Can be viewed in either landscape or portrait mode. Perfect for GPS Maps

**SPEED/UTV**





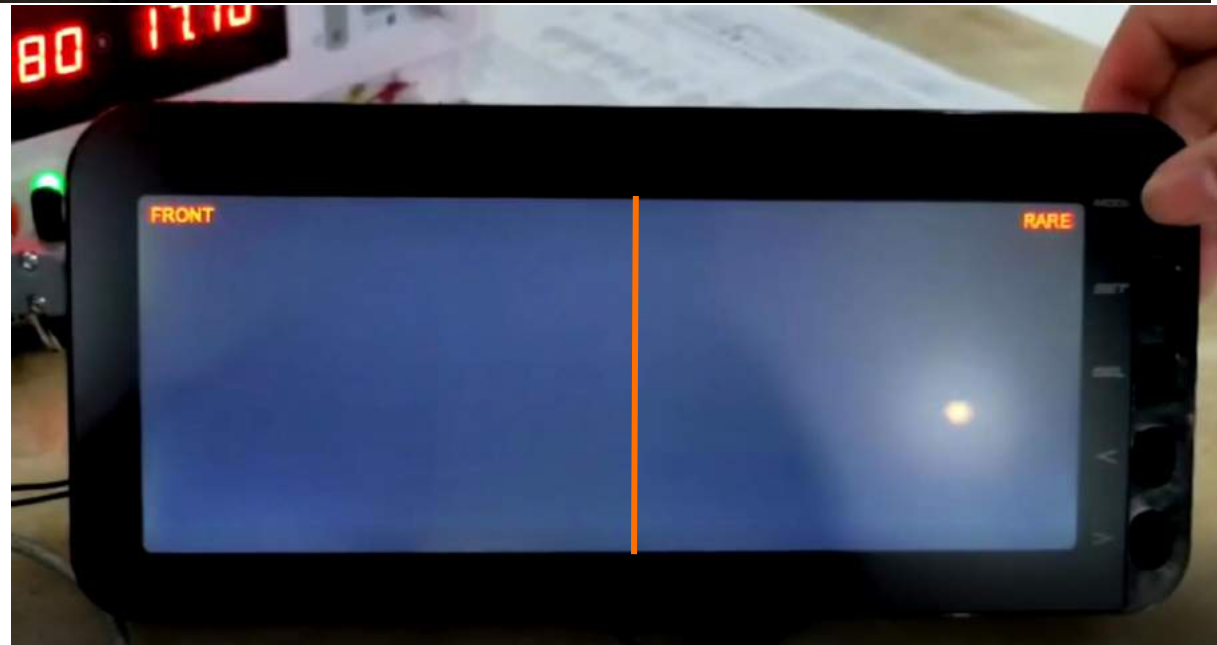
# Instrument Pannel

## FEATURES

- Two Main Screens
- Two Phone Screen Mirroring options
- Two External Camera Inputs

**Cameras Sold Separately**

**SPEED  UTV**



# MAD MAX GORDON

New YouTube



MAD MAX GORDON  
146 subscribers

Speed in Training

**SPEED**  **UTV**





# Oil Tank

## FEATURES

- Oil Prefilter (before oil enters engine)
- The oil prefilter also assists in reducing oil cavitation.

**Easy Access Prefilter**

**SPEED  UTV**



# Oil Tank

## FEATURES

- Multiple baffle design
- Clear sight tube

Simple oil volume and color check

**SPEED**  **UTV**





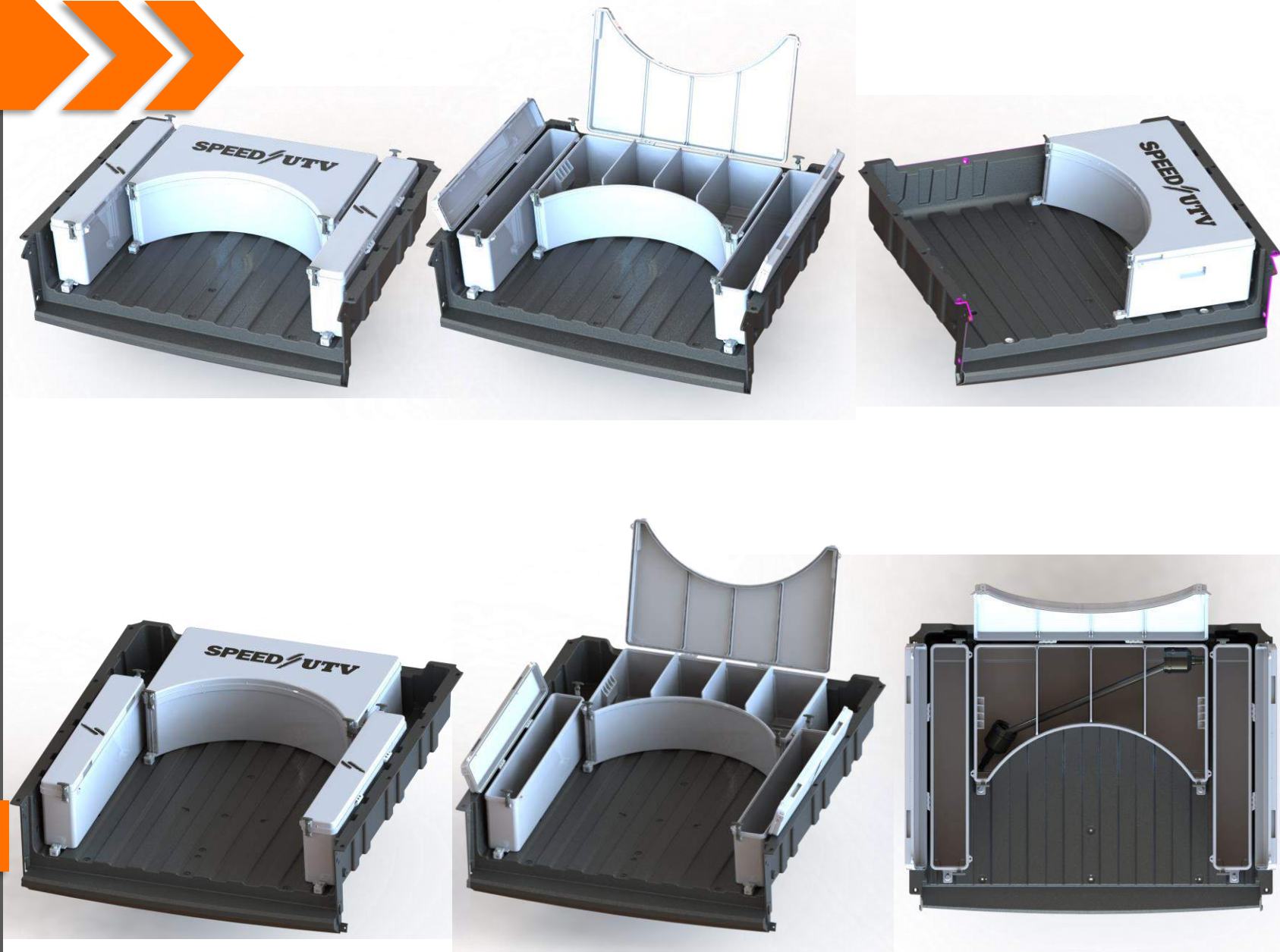
# Storage Boxes

## FEATURES

- Secure mounting and easy installation
- Precise Fitment to allow 35" spare tire
- Dividers allow for positioning of spare parts

Perfect for Tailgating

**SPEED/UTV**



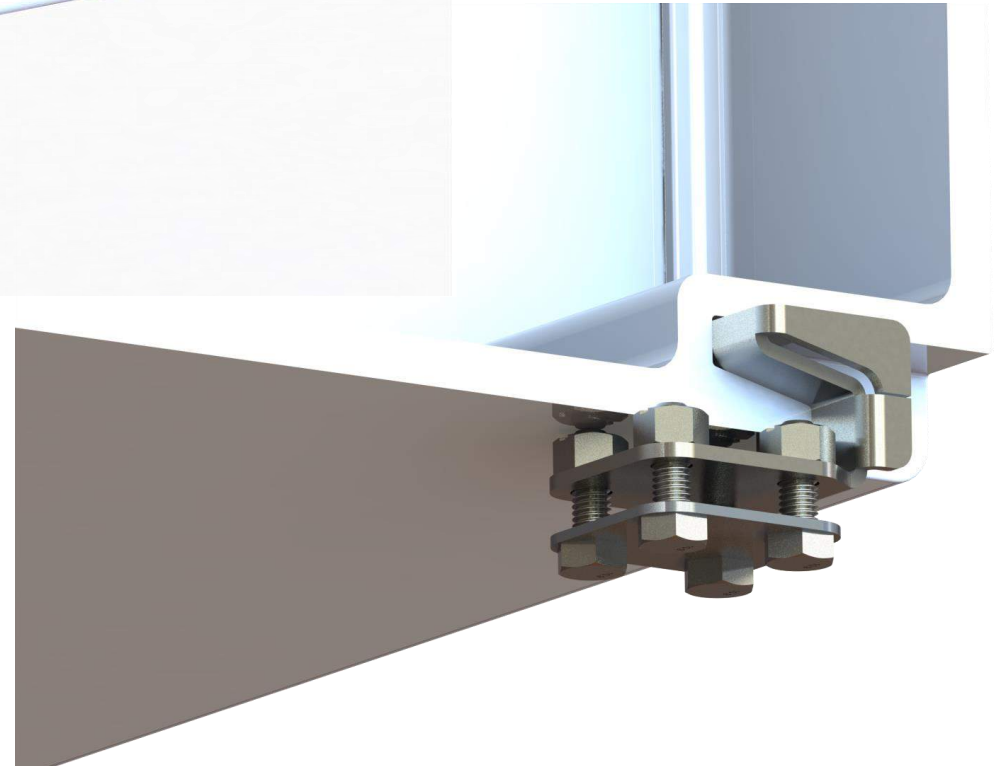
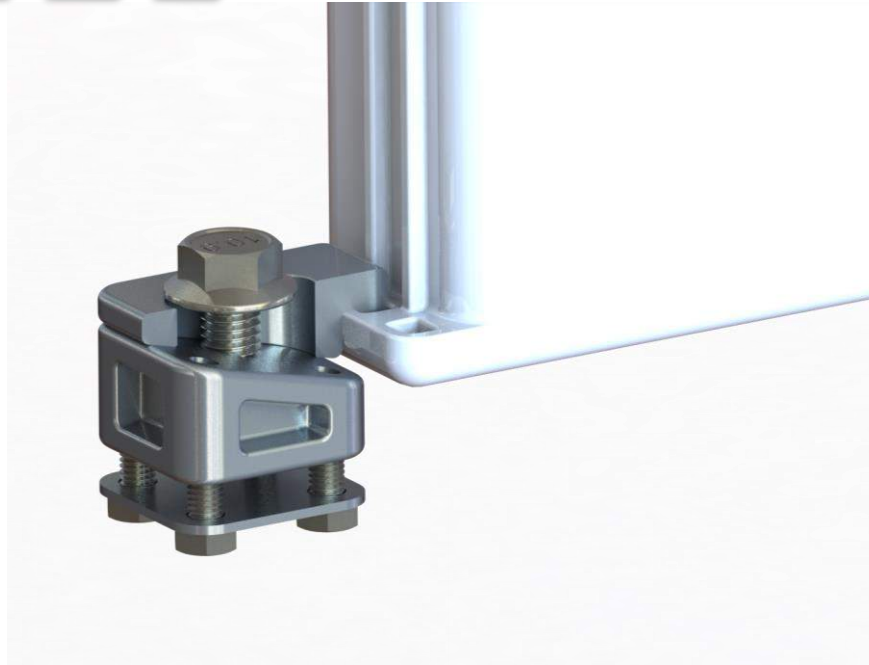
# Storage Boxes

## FEATURES

- Secure mounting and easy installation
- Mounts provide vertical/lateral clamping force as fasteners are tightened

**Perfect for Tailgating**

**SPEED  UTV**





# Storage Boxes

## FEATURES

- Rubber draw latches provide easy use and strong lid retention
- Locking bosses for use with padlocks
- Rectangle box mounting allows for lids to swing in/outboard

**Perfect for Tailgating**

**SPEED  UTV**



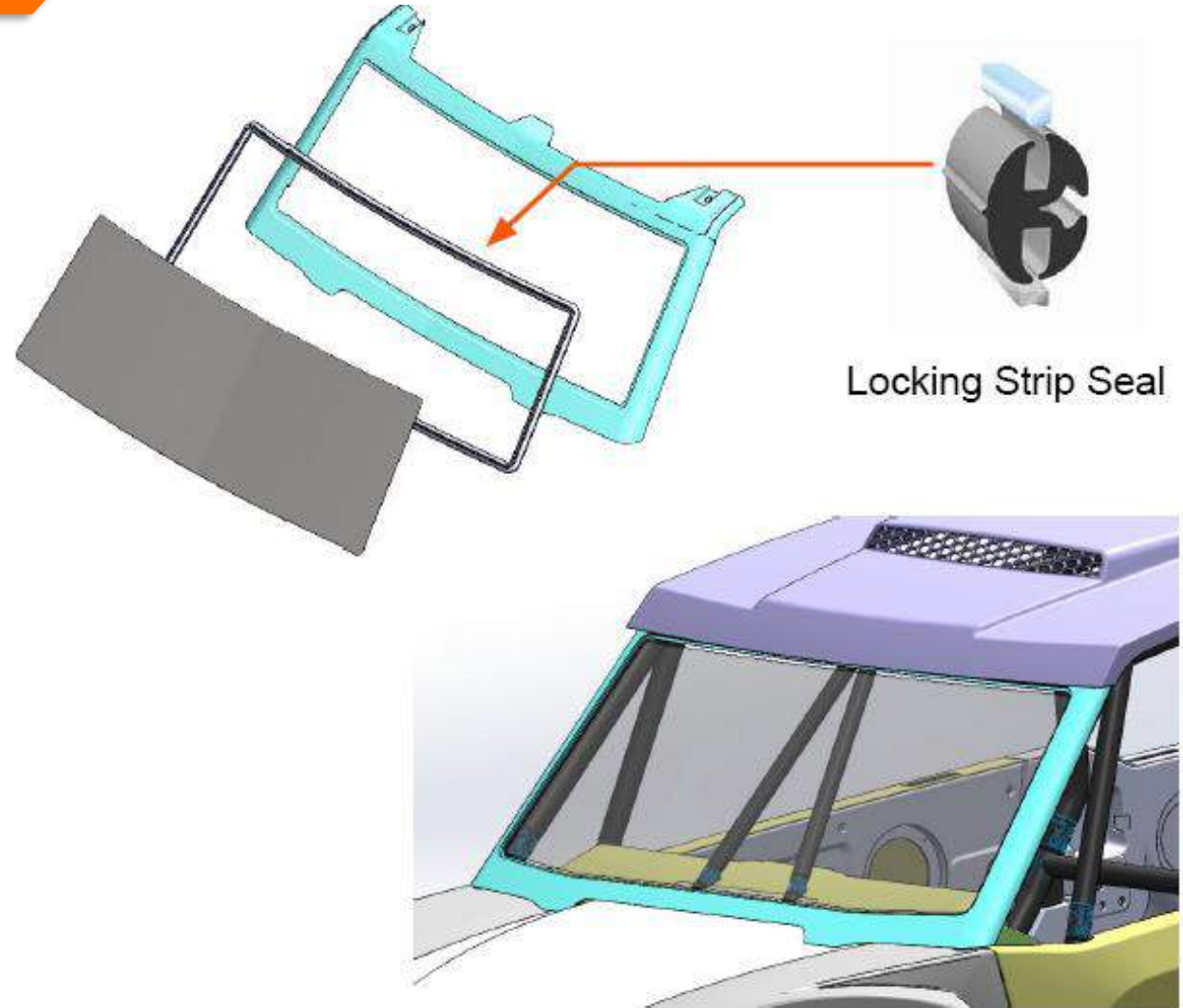
# Windshield

## FEATURES

- Laminated automotive glass
- Cylindrically symmetric curve
- Free float suspended mounting
- 578in area wiper coverage

Visibility in All Conditions

**SPEED**  **UTV**

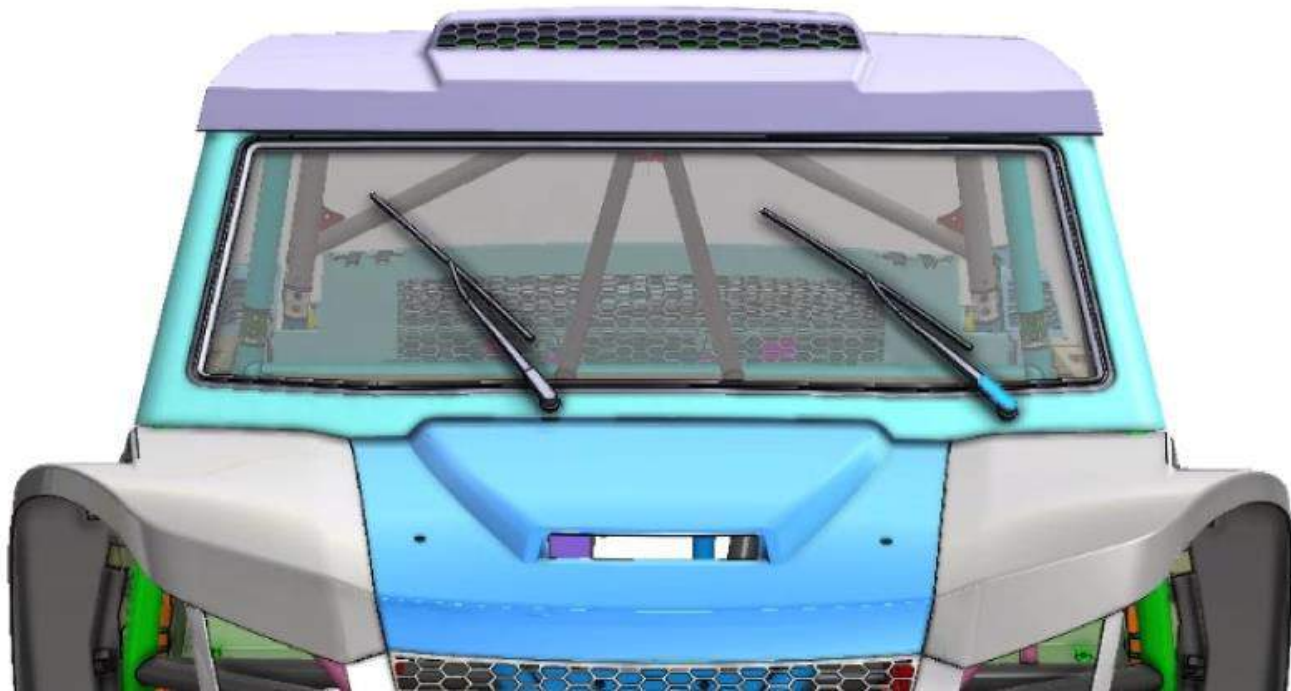




# COMING SOON

## FEATURES

- Laminated automotive glass
- Cylindrically symmetric curve
- Free float suspended mounting
- 578in<sup>2</sup> area wiper coverage
- WINDSHIELD WIPERS



Visibility in All Conditions

**SPEED**  **UTV**

ENGINEERING THE FUTURE OF OFF ROAD

# More Plastic

## FEATURES

- Robust Plastic Construction
- Scratch and wear resistant
- Easily cleaned

Footwells

**SPEED**  **UTV**





# More Plastic

## FEATURES

- Robust Plastic Construction
- Scratch and wear resistant
- Easily cleaned

**Dash Surround**

**SPEED  UTV**



# More Plastic

## FEATURES

- Robust Plastic Construction
- Scratch and wear resistant
- Easily cleaned

Glove Box

**SPEED**  **UTV**





# More Plastic

## FEATURES

- Robust Plastic Construction
- Scratch and wear resistant
- Easily cleaned

Door Pannel

**SPEED**  **UTV**



# More Plastic

## FEATURES

- Robust Plastic Construction
- Scratch and wear resistant
- Easily cleaned

Rocker Pannel





# Plastic Tooling

## FEATURES

- Large Scale Production Tooling

Center Console Tooling

**SPEED**  **UTV**



# Plastic Tooling

## FEATURES

- Large Scale Production Tooling

Dash Tooling



**SPEED/UTV**



**Call in with your questions:**

**704-949-1255**



**Lucky Caller wins**



## SPEED UTV – FAMILY

**SPEED UTV**



ENGINEERING THE FUTURE OF OFF ROAD